

# Post-16 Prospectus

2020  
2021

Information and Advice for Young People

BACK TO  
CONTENTS

1

Getting  
Started

2

Traineeships,  
Apprenticeships  
& Jobs

3

Advice for Pupils with  
Special Educational  
Needs or Disabilities  
(SEND) or Additional  
Support Needs

4

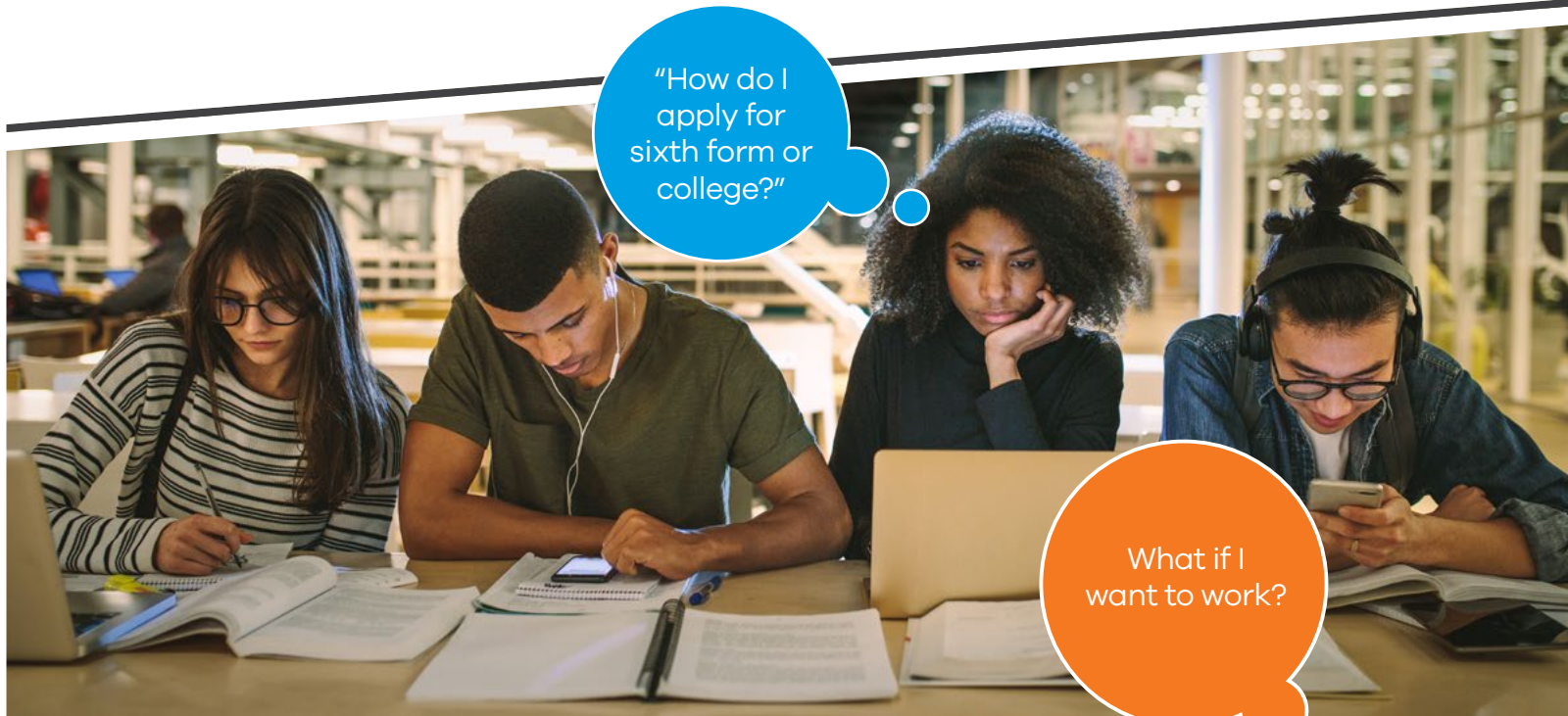
Application  
Form

5

Vocational, A Level  
and GCSE Course  
Listings

6

School and College  
Sixth Forms  
in Croydon



"How do I  
apply for  
sixth form or  
college?"

What if I  
want to work?



The prospectus  
makes clear what  
is available.

The prospectus  
is very useful for  
information.



Your options after year 11 in Croydon

Delivering for Croydon

**CROYDON**  
www.croydon.gov.uk

## BACK TO CONTENTS

# 1

Getting Started

# 2

Traineeships, Apprenticeships & Jobs

# 3

Advice for Pupils with Special Educational Needs or Disabilities (SEND) or Additional Support Needs

# 4

Application Form

# 5

Vocational, A Level and GCSE Course Listings

# 6

School and College Sixth Forms in Croydon

This prospectus has information that will help you with the decisions about your next step, whether you're thinking about getting a job, an apprenticeship or carrying on with studying.

We strongly encourage you to use the prospectus alongside the support you will get from your school or college, your parents / carers and other professionals that you may talk to about your future.

Important note: the information in this prospectus has been provided directly by the schools, colleges and training providers who have opted to be included in this edition and is correct at the time of going to print. Please check details with organisations.

## CONTENTS

4 The Post 16 Participation Team at Croydon Council

5 Getting Started

6 Your Yr. 11 timeline

8 Preparing for your interview

9 Money to support you whilst you learn

10 Traineeships, Apprenticeships & Jobs

11 Preparing for the world of work: Traineeships & Apprenticeships

13 Preparing for the world of work: jobs

14 CV template

16 Traineeships and Alternative post programme providers

18 Useful websites

19 Advice for Pupils with Special Educational Needs or Disabilities (SEND) or Additional Support Needs

## BACK TO CONTENTS

1

Getting Started

2

Traineeships, Apprenticeships &amp; Jobs

3

Advice for Pupils with Special Educational Needs or Disabilities (SEND) or Additional Support Needs

4

Application Form

5

Vocational, A Level and GCSE Course Listings

6

School and College Sixth Forms in Croydon

22 Where you can study in Croydon

23 Support into employment

24 Where you can study outside of Croydon

25 Social Care & Travel

26 Moving from secondary school to further education

28 Your Yr. 11 timeline

29 Application and Course Listings

30 Completing your 6th Form or college application

31 Choosing what to study and where to go

32 Open Event Calendar

34 Application Form

38 Vocational Course Listings

45 A Level Course Listings

48 GCSE Course Listings

49 Other Colleges and Sixth Forms

50 Map of Croydon Sixth Forms and Colleges

51 School and College Sixth Forms in Croydon

- ⊗ Archbishop Tenison's Church of England Sixth Form
- ⊗ Capel Manor College
- ⊗ Coombe Wood School Sixth Form
- ⊗ Coloma Convent Girls' School
- ⊗ Coulsdon Sixth Form College
- ⊗ Croydon College
- ⊗ Croydon College Apprenticeships
- ⊗ Harris Professional Skills Sixth Form
- ⊗ Harris Sixth Form
- ⊗ John Ruskin College
- ⊗ Norbury Manor Business and Enterprise College
- ⊗ Oasis Academy Shirley Park
- ⊗ The Quest Academy
- ⊗ Riddlesdown Collegiate, College VI
- ⊗ Shirley High School Performing Arts College
- ⊗ St. Joseph's College
- ⊗ The BRIT School
- ⊗ Thomas More Catholic School
- ⊗ Woodcote High School

71 Notes page



# The Post 16 Participation Team at Croydon Council

## BACK TO CONTENTS

### 1

Getting Started

### 2

Traineeships, Apprenticeships & Jobs

### 3

Advice for Pupils with Special Educational Needs or Disabilities (SEND) or Additional Support Needs

### 4

Application Form

### 5

Vocational, A Level and GCSE Course Listings

### 6

School and College Sixth Forms in Croydon

## Who we are and what we do

**If you are in Year 11** and attend a Croydon school, the Post 16 Participation team at Croydon Council makes this prospectus available to you through your school. The advice and information in this prospectus is impartial; this means that the information is unbiased. We strongly encourage you to use the prospectus alongside the support you will get from your school or college, your parents / carers and other professionals that you may talk to about your future.

**If you are 16+**, have left school and are not sure about your next step, the Post 16 Participation team at Croydon Council can give you information and advice that will help you make decisions about your future.

## Once you have left Year 11:

i. **We are likely to contact you and your parents / carers** by letter, email, phone or social media to ensure that we hold accurate information about you\*. We also work closely with Croydon schools and colleges to get this information.

We will always tell you who we are and why we're calling. To see how we use your personal information, see [www.croydon.gov.uk/democracy/data-protection-freedom-information/privacy-notices/education-youth-engagement-service-privacy-notice](http://www.croydon.gov.uk/democracy/data-protection-freedom-information/privacy-notices/education-youth-engagement-service-privacy-notice).

ii. **If you are not studying, working or in a training role, you can get support from a caseworker.** After finding out a bit more about you, the caseworker will talk you through the options available to you and help you achieve your goal.

iii. **With your permission, we can refer you to other organisations** that can give more advice and support you to achieve your goal.

## \*The Legal Stuff

The law specifies that you must participate in some form of learning (education, apprenticeship, job with training) until your 18th birthday or when you achieve the equivalent of 2 A levels.

As with all English local authorities, Croydon Council has a legal responsibility to:

- Support Yr. 11 students educated in Croydon to have a plan for the September after your GCSEs.
- Encourage all young people aged 16-18 living in Croydon to be in suitable education, employment or training placements after their GCSEs.

iii. Report to the Government (the Department for Education) how many of you are in education, employment or training placements.

In order to get this information, we work closely with Croydon schools and colleges, who let us know who is enrolled with them and what they are studying. We also link with other local authorities across England, sharing information about students in our area, e.g. if you live in Bromley, but attend(ed) a Croydon school, we will let Bromley Council know whether you are studying, in a job or working as an Apprentice. There is a chance that your home borough will be in touch with you too. **We recommend that you and your parents / carers check how your details are stored and used at sixth forms and colleges.**

## What you can do to help us help you

- Keep your school and us informed of your plans and what you are doing.



- Respond to any letters, emails we send or phone calls that we make to you. The sooner you respond, the less contact attempts we will make.

## Who can help

**If you are in Year 11** speak to someone in school, e.g. the school Careers Adviser, your Head of Year, your tutor etc.

**If you are Year 11 age, but not in school or if you are 16 – 18 years old** and not in education, employment or training, contact us at:

✉ Post16@croydon.gov.uk

☎ 020 8726 7485

🌐 Or find out some more information about your choices at <https://youngcroydon.org.uk/education-training-jobs/>

**BACK TO CONTENTS**
**1**

Getting Started

**2**

 Traineeships,  
Apprenticeships  
& Jobs

**3**

 Advice for Pupils with  
Special Educational  
Needs or Disabilities  
(SEND) or Additional  
Support Needs

**4**

 Application  
Form

**5**

 Vocational, A Level  
and GCSE Course  
Listings

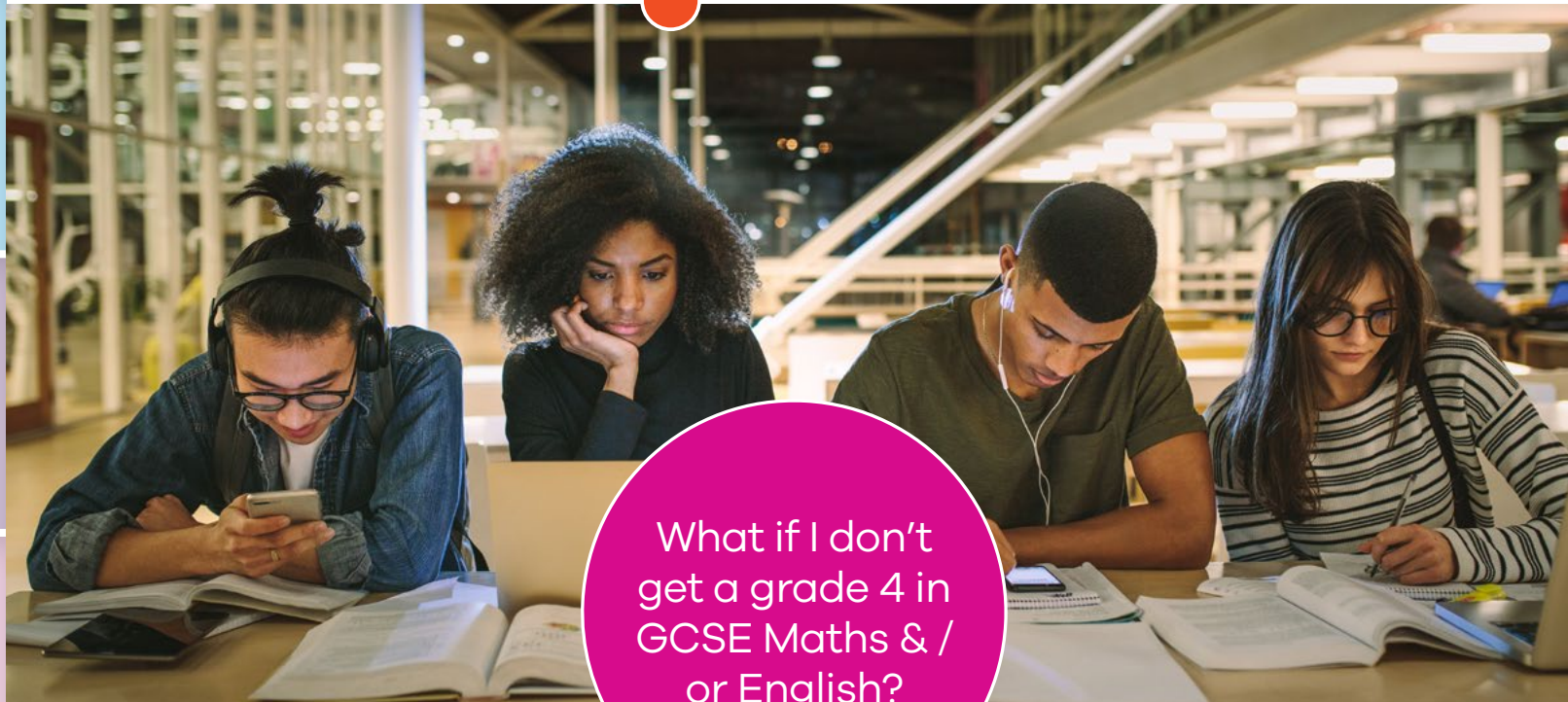
**6**

 School and College  
Sixth Forms  
in Croydon

Did you know you have to stay in some form of learning until you are 18 years old?

**You can:**

- ⌚ Carry on studying at a school, college or being educated at home.
- ⌚ Earn money and learn at the same time, e.g. an Apprenticeship.
- ⌚ Study part-time, whilst you work or volunteer (for 20+ hours a week).



What if I don't get a grade 4 in GCSE Maths & / or English?



- ⌚ You will need to retake these until you achieve a grade 4 (also known as a Level 2) by the time you are 18. You can find out more about this from your school, college or training organisation.

## BACK TO CONTENTS

### 1

Getting Started

### 2

Traineeships, Apprenticeships & Jobs

### 3

Advice for Pupils with Special Educational Needs or Disabilities (SEND) or Additional Support Needs

### 4

Application Form

### 5

Vocational, A Level and GCSE Course Listings

### 6

School and College Sixth Forms in Croydon



## September

- Think about what you want to do after your GCSEs.
- Discuss your subject / career interests with a Careers Adviser as well as people who know you well, e.g. teacher, parent / carer. They can help you think about your best skills and how you learn best.
- Start researching your preferred options and make a note of upcoming Open Events (our Open Event calendar on page 27 as well as the school and college websites will help you).



## October

- Prepare for and go to Open Events
- Apply to at least 3 schools and / or colleges. Complete your applications ASAP as course spaces fill up very quickly. (You can use the application form on page 35).
- Don't forget to keep a record of where you have applied to, the courses you have applied for and when you submitted your applications.
- If you're thinking about starting an Apprenticeship, now is a good time to research the different Apprenticeships available (see page 11 for more information). Also make sure your CV is up to date.
- Application forms ask for a reference – think about who in your school you can ask to do this.
- Use the half term break to assess your situation:
  - Have you attended any Open Events?

- How many applications have you sent and have they been acknowledged by the school or college? If you haven't heard anything, make a note to contact them after half term.
- If you haven't sent any applications yet, do it now!



## November

- Continue attending Open Events and submitting applications.



## December

- Start preparing for your interviews (see page 8 for some tips).
- The end of term is the ideal time to have submitted all of your applications.



## January

- Interviews usually start this month. Interviews give schools, colleges and employers an opportunity to find out more about you.
- Make sure you carefully read what you should bring to your interviews.
- Start making applications for Apprenticeships and Traineeships (see page 11 for more information).

## February

- If you haven't heard back from any schools or colleges you have applied to, contact them and find out what is happening with your application.
- You might be entitled to money that can support you whilst you study or complete your Apprenticeship - this is called a 16-19 Bursary Fund (see page 9 for more information).



## Before the Easter holiday

- If you haven't heard back with offers of a place and / or attended any interviews, contact the schools or colleges you have applied to.
- If you haven't made (m)any applications, you can still submit them, but you might not get an offer of an interview. Make sure to contact the schools or colleges to confirm they have received your applications.



## After the Easter holiday

- If you are looking for an Apprenticeship or Traineeship, now is the time to keep on top of this!

**If you are in Yr. 11, your official last day of school is the last Friday in June. Only after this date, can you start working full-time or start an Apprenticeship.**

## BACK TO CONTENTS

# 1

Getting Started

# 2

Traineeships, Apprenticeships & Jobs

# 3

Advice for Pupils with Special Educational Needs or Disabilities (SEND) or Additional Support Needs

# 4

Application Form

# 5

Vocational, A Level and GCSE Course Listings

# 6

School and College Sixth Forms in Croydon

PLACES YOU CAN LEARN	THINGS TO CONSIDER	Is this where you see yourself learning? ✓ X
<b>School 6<sup>th</sup> Form</b>	Year 12 – 13 (Yr. 14 in some schools)	✓ X
	Learning and timetabling is more flexible than Yr. 7 - 11, but you will be expected to study independently during your free periods.	
	You can usually wear your own clothes, but there may be specific instructions, such as business wear only.	
	Although A-levels and vocational courses* are on offer, schools more commonly offer more A-level subjects (*courses directly related to career areas).	
<b>6<sup>th</sup> Form College</b>	For 16 – 19 year olds.	
	College campuses are often larger than school sites.	
	Learning and timetabling are more flexible than in school, but you will be expected to study independently during your free periods.	
	You can wear your own clothes.	
<b>Further Education (FE) College</b>	A-levels and vocational courses are on offer.	
	For people aged 16+.	
	College campuses are often considerably larger than school sites. A larger campus means many more people.	
	Learning and timetabling are more flexible than in school, but you will be expected to study independently during your free periods.	
<b>(Independent) Special Schools &amp; Colleges</b>  (see page 19 for more detailed information)	You can wear your own clothes	
	A wide range of courses, e.g. A Levels, BTECs, Apprenticeships, ESOL, Skills for working life etc.	
	For 16 – 25 year olds with additional learning and physical needs.	
	Learning is based on your needs and may require you to go to school out of the borough.	
<b>Apprenticeship providers / Training Centres</b>	You can wear your own clothes.	
	You and your family will be working with a professional who will be helping you to plan your next step.	
	For people aged 16+.	
	Learning and timetabling are more flexible and is focused on getting you ready for the world of work.	
	You can wear your own clothes.	
	The courses and training are focused on ensuring you are ready to start a job.	

BACK TO CONTENTS

1

Getting Started

2

Traineeships, Apprenticeships & Jobs

3

Advice for Pupils with Special Educational Needs or Disabilities (SEND) or Additional Support Needs

4

Application Form

5

Vocational, A Level and GCSE Course Listings

6

School and College Sixth Forms in Croydon



Before your interview

You should:

- ④ **Research** your chosen course(s) and schools / colleges. If you don't do your research, they will think you are not interested.
- ④ **Prepare your interview outfit.** Make sure your clothes are clean and smart. They should not however take centre stage.
- ④ **Practice your journey** to the interview location. This will take away some of the stress of interview day.



On the day of / at your interview

You should:

- ④ Arrive 10-15 mins early and switch off your mobile 'phone.
- ④ Give a confident handshake, smile and maintain eye contact. Also make sure you sit up straight and give your full attention throughout the interview.
- ④ Listen carefully to each question you are asked and if you don't understand what they're asking, ask them to repeat it.
- ④ Not chew gum.
- ④ Be enthusiastic!
- ④ Avoid making negative comments about teachers or your school.



At the end of your interview

You should:

- ④ Make sure you are clear what happens after the interview (*who will you hear from and when? Are you expected to do anything?!*)
- ④ Offer a firm handshake and make eye contact when the interviewer brings the interview to a close.



**If you need some help preparing for your interview(s), speak to your school Careers Adviser or form tutor about practicing your interview techniques. Please ensure your interactions are COVID safe.**



## BACK TO CONTENTS

# 1

Getting Started

# 2

Traineeships, Apprenticeships & Jobs

# 3

Advice for Pupils with Special Educational Needs or Disabilities (SEND) or Additional Support Needs

# 4

Application Form

# 5

Vocational, A Level and GCSE Course Listings

# 6

School and College Sixth Forms in Croydon

HELP AVAILABLE	FOR YOU IF YOU...	FOR MORE INFORMATION...
<b>16-19 Bursary Fund</b>	Are in care or a care leaver. Get Income Support, Universal Credit, Employment Support Allowance, Disability Living Allowance or Personal Independent Payments.	Apply to your school, college or training provider. (The amount of bursary you are allocated depends on your personal circumstances) <a href="https://www.gov.uk/1619-bursary-fund">https://www.gov.uk/1619-bursary-fund</a>
<b>Day-to-day living costs</b>	Need help with transport, food, books or childcare costs etc.	Apply directly to your school, college or training provider. Each organisation decides how much money they <i>may</i> give you and when you will receive it. <a href="http://www.gov.uk/further-education-courses/financial-help">www.gov.uk/further-education-courses/financial-help</a>
<b>Travel</b>	Require support with or need specialist travel arrangements.	<a href="https://www.croydon.gov.uk/education/schools-travel/travel-assistance-for-ages-16-to-25-in-education">https://www.croydon.gov.uk/education/schools-travel/travel-assistance-for-ages-16-to-25-in-education</a>



**BACK TO CONTENTS**

**1**

Getting Started

**2**

Traineeships, Apprenticeships & Jobs

**3**

Advice for Pupils with Special Educational Needs or Disabilities (SEND) or Additional Support Needs

**4**

Application Form

**5**

Vocational, A Level and GCSE Course Listings

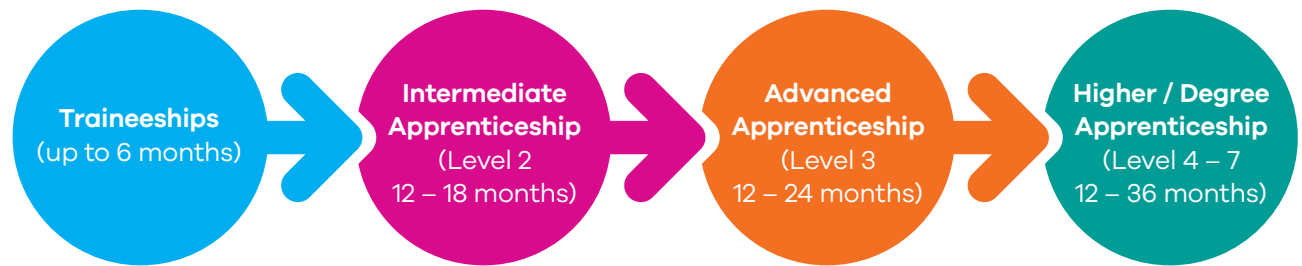
**6**

School and College Sixth Forms in Croydon



# Traineeships, Apprenticeships & Jobs

# Preparing for the world of work: Traineeships & Apprenticeships



YOU WILL DEMONSTRATE YOUR SKILLS, KNOWLEDGE AND COMPETENCIES →

## BACK TO CONTENTS

# 1

Getting Started

# 2

Traineeships, Apprenticeships & Jobs

# 3

Advice for Pupils with Special Educational Needs or Disabilities (SEND) or Additional Support Needs

# 4

Application Form

# 5

Vocational, A Level and GCSE Course Listings

# 6

School and College Sixth Forms in Croydon

## Traineeships prepare you for an Apprenticeship.

You can start these any time during the year.

### You must be:

- ④ 16-24 years old.
- ④ Unemployed or working less than 16 hours with little or no work experience.
- ④ Eligible to live and work in the UK.

### What you can expect on a Traineeship:

- ④ A work placement that will last anywhere between 6 weeks to 6 months. There are lots of different industries to choose from, e.g. Dental Nursing, Construction, Marketing.
- ④ Time to study and improve your Maths and English skills (if you didn't get these at GCSE grade 4).
- ④ To learn about what you need to make you ready for the job market.
- ④ Some help with your travel and / or lunch costs (check this with each provider).
- ④ Support from your tutor to move on to your next step, e.g. an Apprenticeship.

**For more information:** [www.gov.uk/find-traineeship](http://www.gov.uk/find-traineeship)

## As an Apprentice

You will spend some of your time working and some of your time (usually about 20% of your working week, which is about 1 day). studying for your job related qualification, e.g NVQ in Project Management.

The grades you get at GCSE along with the experience you have in a subject area usually determines whether you start at Level 2 or Level 3. See page 31 for more information.

### You must:

- ④ Be 16+ by the end of the summer holidays.
- ④ Not be studying full-time.
- ④ Be eligible to live and work in the UK.

## What you can expect on an Apprenticeship:

- ④ You will be treated as an employee.
- ④ You will get paid at least the National Minimum Wage for Apprentices. However, on average, Apprentices earn between £160.00 - £190.00 a week. As with most jobs, over time your wage will increase.

For more information about Apprenticeships:

- ④ [www.gov.uk/apprenticeships-guide](http://www.gov.uk/apprenticeships-guide)
- ④ [www.gov.uk/apply-apprenticeship](http://www.gov.uk/apply-apprenticeship)

## Find out more about local Traineeship & Apprenticeship opportunities at:

Croydon works: [www.croydonworks.co.uk](http://www.croydonworks.co.uk) and Croydon Apprenticeship Academy:

- ④ <https://www.croydon.gov.uk/education/adult/apprenticeships/croydon-apprenticeship-academy-0/croydon-apprenticeship-academy>

If you don't quite feel ready for 6th Form, college or an Apprenticeship, you might want to consider a:

## Foundation Learning or Study Programme.

**You must be:** 16+

### What you can expect:

- ④ To develop your employability skills (these are skills that will help you in the world of work).
- ④ Courses to range anywhere from 1 week to up to 3 months.
- ④ Courses start at different times throughout the year.

### For more information:

- ④ See page 16.
- ④ Check your monthly opportunities bulletins for course details at: <https://youngcroydon.org.uk/education-training-jobs/>

# CROYDON APPRENTICESHIP ACADEMY



EARN • LEARN • EXCEL

BACK TO  
CONTENTS

1

Getting  
Started

2

Traineeships,  
Apprenticeships  
& Jobs

3

Advice for Pupils with  
Special Educational  
Needs or Disabilities  
(SEND) or Additional  
Support Needs

4

Application  
Form

5

Vocational, A Level  
and GCSE Course  
Listings

6

School and College  
Sixth Forms  
in Croydon



**So many destinations....**  
Which route should you take?

We can help you choose if you're not sure, or perhaps help find the one you're looking for. Just keep your eyes on the road in front of you and enjoy the journey.

 [croydon.gov.uk/100in100](https://croydon.gov.uk/100in100)

**BE ONE OF THE 100!**



## BACK TO CONTENTS

1

Getting Started

2

Traineeships, Apprenticeships &amp; Jobs

3

Advice for Pupils with Special Educational Needs or Disabilities (SEND) or Additional Support Needs

4

Application Form

5

Vocational, A Level and GCSE Course Listings

6

School and College Sixth Forms in Croydon

In an increasingly competitive job market, it is important to start thinking about how you can develop your employability skills (*the skills you need in the world of work*), because you will need to evidence this on your CV. You can develop your employability skills in a number of ways.

### Helping out at home:

For example, if you babysit your siblings, this is an example of your reliability.

### During the school holidays

The school holidays is an ideal time to develop your experience in the work place. It's a good idea to start looking for opportunities a long time before the holidays start, because there will be other students who will be doing the same. The websites below might help you.

- [www.e4s.co.uk](http://www.e4s.co.uk)
- <http://www.studentjob.co.uk>

### Work experience

**Any work experience is useful.** Whether arranged by your school / college or by yourself, work experience is a great way for you to gain skills in your chosen career. The following web links give advice about looking for work experience and also lets you know the legal stuff around how many hours you can work.

- <https://www.croydon.gov.uk/advice/jobs-and-training-0>
- [www.croydon.gov.uk/business/licences/child-licences/regulations](http://www.croydon.gov.uk/business/licences/child-licences/regulations)

Whilst on work experience you may get the opportunity to develop your transferable skills. Transferable skills are skills you learn in one setting, and then use in another. For example, you may learn to use different software packages in school for a



project, but then also use them whilst on your work experience placement.

### Volunteering

Volunteering allows you to develop your skills and in many cases can often lead to paid work opportunities. The websites below list volunteering opportunities:

- [www.cvalive.org.uk/volunteering](http://www.cvalive.org.uk/volunteering)
- [www.do-it.org.uk](http://www.do-it.org.uk)
- [www.vinspired.com](http://www.vinspired.com)

### Part-time work

Is something you can do whilst you're studying, but there are rules around how many hours you can work:

- [www.croydon.gov.uk/business/licences/child-licences/regulations](http://www.croydon.gov.uk/business/licences/child-licences/regulations)

Transferable skills are skills you learn in one setting, and then use in another



## BACK TO CONTENTS

1

Getting Started

2

Traineeships, Apprenticeships &amp; Jobs

3

Advice for Pupils with Special Educational Needs or Disabilities (SEND) or Additional Support Needs

4

Application Form

5

Vocational, A Level and GCSE Course Listings

6

School and College Sixth Forms in Croydon

If you are looking for a job, part-time, full-time or a summer job, you will need a CV.

This CV template, will help you to create your CV.

### Your Name

name@emailaddress.co.uk | Croydon, CR0 1AB

#### OBJECTIVE

This should be a brief summary of what you are aiming for. Match your skills to the job ad. What why the company should hire you.

#### EDUCATION

**2017 – 2021 Name of School, Borough**

GCSEs (exams Jun 2021):

Maths  
Geography  
English  
Business Studies  
Double Science

GCSE exams already taken

#### SKILLS

List at least 3 skills here  
List at least 3 skills here  
List at least 3 skills here  
List at least 3 skills here  
List at least 3 skills here

#### VOLUNTEER / WORK EXPERIENCE

Your position

Dates | Organisation Name

- Describe your responsibilities and achievements be clear and concise.
- Describe your responsibilities and achievements be clear and concise.
- Describe your responsibilities and achievements be clear and concise.

#### HOBBIES

List at least 3 hobbies here  
List at least 3 hobbies here  
List at least 3 hobbies here  
List at least 3 hobbies here  
List at least 3 hobbies here

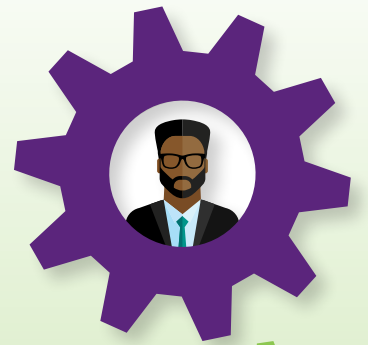
#### EXTRA CURRICULAR ACTIVITIES

**Your activity:** give details about the activity and the skills and abilities that you have gained.

**Your activity:** give details about the activity and the skills and abilities that you have gained.

**Your activity:** give details about the activity and the skills and abilities that you have gained.

# Thinking about your next steps?



BACK TO CONTENTS

1

Getting Started

2

Traineeships, Apprenticeships & Jobs

3

Advice for Pupils with Special Educational Needs or Disabilities (SEND) or Additional Support Needs

4

Application Form

5

Vocational, A Level and GCSE Course Listings

6

School and College Sixth Forms in Croydon



**Croydon Works** is Croydon's Job & Training Hub

**We are a FREE to use recruitment service.**

We offer: Apprenticeships • Interview prep  
Live vacancies • Free Sector Specific Training

Head to our website to see current vacancies and how to get in touch

 [croydonworks.co.uk](https://www.croydonworks.co.uk)

Follow our social updates @CroydonWorks or call us on ☎020 8604 7471

**CROYDON**  
www.croydon.gov.uk

**CROYDON**  
**WORKS**



# Traineeship and Alternative Post-16 Study Programme Providers

The organisations listed below offer a wide range of qualifications and study programmes. Check their websites and contact them to find out more about what they offer.

As you approach the end of Yr. 11, you can also check our monthly bulletin at <https://youngcroydon.org.uk/education-training-jobs/> for information on upcoming courses, training and Apprenticeship opportunities in our monthly bulletin.

## Beats Learning

Rathbone Square, 28 Tanfield Road,  
Croydon, CR0 1BT

☎ 020 3925 4845 📧 info@beatslearning.com  
🌐 www.beatslearning.com

## Croydon College

College Road, Croydon, London CR9 1DX

☎ 020 8686 5700 📧 apprenticeships@croydon.ac.uk  
🌐 www.croydon.ac.uk/apprenticeships

## Groundwork

6 Scarbrook Road, Croydon, CR0 1UH

☎ 020 7960 4282 📠 07889 755173  
📧 jessica.bartley@groundwork.org.uk  
🌐 www.groundwork.org.uk/london

## JACE Training and Assessment Centre

1st Floor, Old Town Hall, Woodcote Road,  
Wallington, Surrey, SM6 0NB

☎ 020 8773 8146 📧 jace@jace-training.co.uk  
🌐 www.jace-training.co.uk

## John Ruskin College

Selsdon Park Road, Croydon, CR2 8JJ

☎ 020 8652 1131  
📧 JRCApprenticeships@johnruskin.ac.uk  
🌐 www.johnruskin.ac.uk

## London Learning Consortium

Christopher Wren Yard, 119 High Street,  
1st Floor, Croydon, CR0 1QG

☎ 020 8774 4040 📠 07469 147498  
📧 info@londonlc.org.uk 🌐 www.londonlc.org.uk/

## Palace for Life Foundation

Selhurst Park Stadium, Holmesdale Road  
London SE25 6UF

☎ 0208 768 6047 📧 admin@palaceforlife.org  
🌐 www.palaceforlife.org

## Prevista

First Floor, Interchange House,  
81-85 Station Rd, Croydon CR0 2RD

☎ 020 7609 4198 📠 07739 176648  
📧 enquiries@prevista.co.uk  
🌐 www.prevista.co.uk

## Runway Training

Business Xchange Hub, Marco Polo House,  
Croydon CR0 2BX

☎ 07950 267342 📧 enquiries@runwaytraining.co.uk  
🌐 www.runwaytraining.co.uk

## Sutton & District Training

240-244 High Street, Sutton, SM1 1PA

☎ 020 8687 5225 📧 careers@suttondistrict.co.uk  
🌐 www.suttondistrict.co.uk

## Tempus Training

Business Xchange Hub, Marco Polo House,  
Croydon CR0 2BX

☎ 01273 980 243 📧 info@tempustraining.co.uk  
🌐 www.tempustraining.co.uk

## The Write Time

Cornerstone House, 14 Willis Rd,  
Croydon CR0 2XX, UK

☎ 020 8689 7676 📠 07722 123751  
📧 mei-lee@thewritetime.org.uk  
🌐 www.the-write-time.org

## Twin Training

4th floor, Business Xchange Hub, Marco Polo  
House, Croydon CR0 2BX

☎ 07841784870 📧 cbrown@twinuk.com  
🌐 www.twinuk.com

**BACK TO  
CONTENTS**

**1**

Getting  
Started

**2**

Traineeships,  
Apprenticeships  
& Jobs

**3**

Advice for Pupils with  
Special Educational  
Needs or Disabilities  
(SEND) or Additional  
Support Needs

**4**

Application  
Form

**5**

Vocational, A Level  
and GCSE Course  
Listings

**6**

School and College  
Sixth Forms  
in Croydon



# ARE YOU AGED 16-19?

BACK TO CONTENTS

1

Getting Started

2

Traineeships, Apprenticeships & Jobs

3

Advice for Pupils with Special Educational Needs or Disabilities (SEND) or Additional Support Needs

4

Application Form

5

Vocational, A Level and GCSE Course Listings

6

School and College Sixth Forms in Croydon



## LOOKING FOR SOMEWHERE TO LEARN?

**Get yourself on to a CALAT study programme!**

Our tailored courses combine academic or vocational qualifications with work experience and English and maths to give you a chance to develop your career choices and apply your skills in real working conditions.

We'll give you a friendly and nurturing environment with small class sizes and a full support service.

### STUDY PROGRAMMES INCLUDE:

- Employability Skills;
- English and maths;
- ESOL (English for Speakers of Other Languages);
- Computing skills;
- Health & Social Care;
- Childcare;
- Customer Service and Business;
- Catering and Hospitality;
- Creative Arts.

**Contact [CALATStudy@croydon.gov.uk](mailto:CALATStudy@croydon.gov.uk) for more information.**

Study programmes tailored to suit you from our mainstream and ALDD (Adults with Learning Difficulties and Disabilities) courses.

Programmes start throughout the year.

**CROYDON**  
[www.croydon.gov.uk](http://www.croydon.gov.uk)

The number of useful websites that can help you find out more about your options is growing all the time. Here are some to explore:



## Apprenticeships

- [www.apprenticeships.org.uk](http://www.apprenticeships.org.uk)

- [www.croydonworks.org.uk](http://www.croydonworks.org.uk)



## Careers

- [www.careersbox.co.uk](http://www.careersbox.co.uk) – Watch video clips of professionals talking about their experience of work and apprenticeships.
 
- [www.icould.com](http://www.icould.com) – Ideas to get you thinking about your future career and how to get there.
 
- <https://nationalcareers.service.gov.uk/> – The government's careers advice site offers dedicated advice to young people and access to support from an Adviser.
 



## Looking for work

- [www.croydonworks.co.uk](http://www.croydonworks.co.uk) – Croydon Works work with businesses in and around Croydon who are seeking local talent.
 
- [www.getmyfirstjob.co.uk](http://www.getmyfirstjob.co.uk)


## Education

- [www.ucas.com/further-education](http://www.ucas.com/further-education) – Information about courses across the London region.
 
- <https://www.themix.org.uk/work-and-study> – Helping young people make informed decisions about work, study or training.

## Finance

- [www.gov.uk/1619-bursary-fund](http://www.gov.uk/1619-bursary-fund) – Financial support to help young people stay in education or training after 16.
 
- [www.moneyadvice.service.gov.uk](http://www.moneyadvice.service.gov.uk) – General information and advice about money.
 

## Traineeship

- [www.findapprenticeship.service.gov.uk/traineeshipsearch](http://www.findapprenticeship.service.gov.uk/traineeshipsearch)


## Volunteering

- [www.cvalive.org.uk/volunteering](http://www.cvalive.org.uk/volunteering)

- [www.do-it.org.uk](http://www.do-it.org.uk)

- [www.vinspired.com](http://www.vinspired.com)


## Work Experience

- [www.croydon.gov.uk/advice/jobs-and-training-0](http://www.croydon.gov.uk/advice/jobs-and-training-0)
- [www.croydon.gov.uk/business/licences/child-licences/regulations](http://www.croydon.gov.uk/business/licences/child-licences/regulations)

BACK TO CONTENTS

1

Getting Started

2

Traineeships, Apprenticeships & Jobs

3

Advice for Pupils with Special Educational Needs or Disabilities (SEND) or Additional Support Needs

4

Application Form

5

Vocational, A Level and GCSE Course Listings

6

School and College Sixth Forms in Croydon

**BACK TO CONTENTS**

**1**

Getting Started

**2**

Traineeships, Apprenticeships & Jobs

**3**

Advice for Pupils with Special Educational Needs or Disabilities (SEND) or Additional Support Needs

**4**

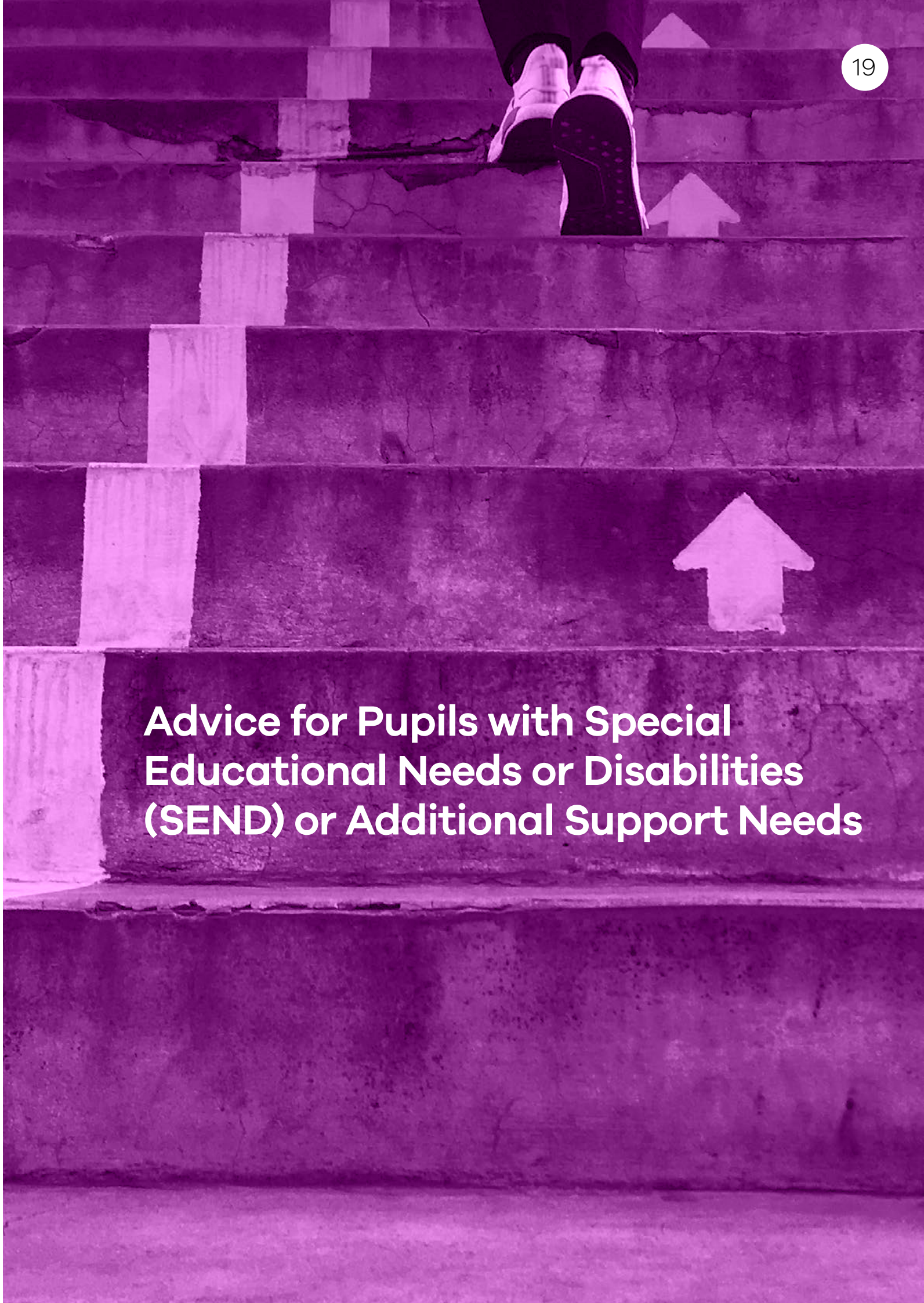
Application Form

**5**

Vocational, A Level and GCSE Course Listings

**6**

School and College Sixth Forms in Croydon



# Advice for Pupils with Special Educational Needs or Disabilities (SEND) or Additional Support Needs

# For young people with additional support needs

## BACK TO CONTENTS

### 1

Getting Started

### 2

Traineeships, Apprenticeships & Jobs

### 3

Advice for Pupils with Special Educational Needs or Disabilities (SEND) or Additional Support Needs

### 4

Application Form

### 5

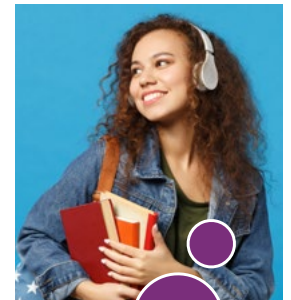
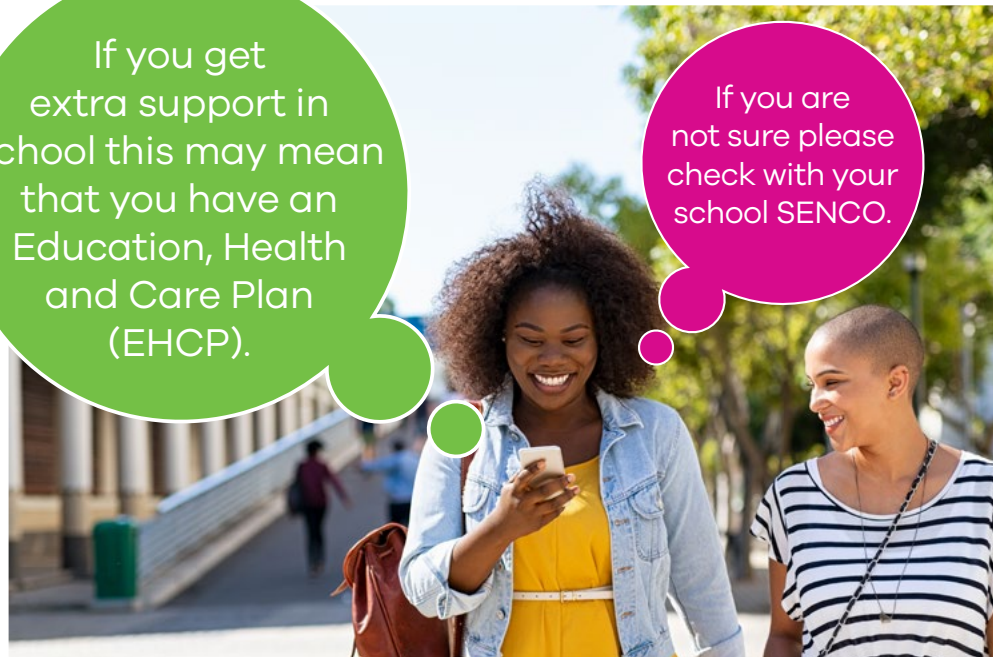
Vocational, A Level and GCSE Course Listings

### 6

School and College Sixth Forms in Croydon

If you get extra support in school this may mean that you have an Education, Health and Care Plan (EHCP).

If you are not sure please check with your school SENCO.



## For young people with additional support needs

**The deadline to confirm** which school or college you will be moving on to is by 31st March 2021, this is to ensure your transition can be well planned. This may mean you will be asked to make choices earlier than other Year 11 students. **You will need to identify your preferred course and college/post 16 placement by 23rd October 2020.**

## So, what will happen over the next few months?

You should have got a letter from your EHCP Coordinator during the Summer Term of Year 10 to advise you of the process and to send you a form so you can tell us what you want to do when you finish secondary school.

### To help this process you can:

- ④ Think about the course you would like to do
- ④ Research the schools / colleges that you would like to go to.

**If you would like to find out more** please contact the SEND Team:

- ☎ 020 8604 7263
- ✉ SENenquiries@croydon.gov.uk
- 🌐 <https://localoffer.croydon.gov.uk>

At the back of this section there is a timeline of actions that will be taken to ensure a smooth transition for you.



If you have an EHCP, you will be supported by the Council's SEN team in securing a suitable post 16 course.

# For young people with additional support needs

## BACK TO CONTENTS

1

Getting Started

2

Traineeships, Apprenticeships &amp; Jobs

3

Advice for Pupils with Special Educational Needs or Disabilities (SEND) or Additional Support Needs

4

Application Form

5

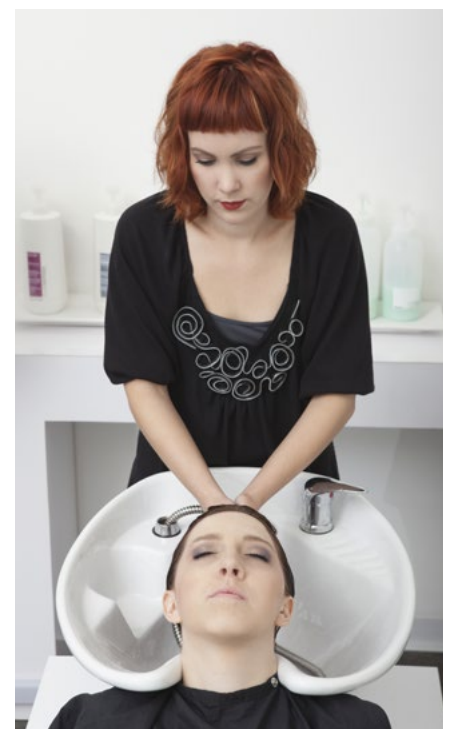
Vocational, A Level and GCSE Course Listings

6

School and College Sixth Forms in Croydon

### What you can learn and the qualifications you need

What you can learn	Entry Level	Level 1	Level 2	Level 3
	<p>Foundation courses, Transition programmes, Supported Internships.</p> <p>Inclusive/Supported Apprenticeships (you only need Entry Level 3 literacy and numeracy if you have an EHCP).</p>	<p>Level 1 courses</p> <p>Traineeships</p> <p>Transition programmes</p> <p>Supported Internships.</p>	<p>Level 2 courses, Apprenticeships</p> <p>Traineeships</p>	<p>AS/A Level courses</p> <p>BTEC National</p> <p>Vocational courses, e.g. C-TECHs</p> <p>Level 3 courses</p> <p>Apprenticeships.</p>
What GCSE or equivalent grades do you need?	No GCSE passes	Some GCSEs (or equivalent) at grade 3 - 1	At least 4 GCSEs (or equivalent) at grade 3 or 4	All least 4 GCSEs (or equivalent) grades 4 or above
How long will it take you?	1-3 years	1-2 years	1-2 years	2 years



## BACK TO CONTENTS

### 1

Getting Started

### 2

Traineeships, Apprenticeships & Jobs

### 3

Advice for Pupils with Special Educational Needs or Disabilities (SEND) or Additional Support Needs

### 4

Application Form

### 5

Vocational, A Level and GCSE Course Listings

### 6

School and College Sixth Forms in Croydon

#### Addington Valley Academy

150 place co-educational school specialising in autism and complex needs.

Temporary site open from Sep 2020.

Newly constructed school to open in Field Way Addington from Sep 2021.

**Contact:**

☎ 0345 402 0453

✉ enquiries@addingtonvalley.org

🌐 <https://addingtonvalley.org>

#### Beckmead College

A special community school for students who have social, emotional and mental health difficulties.

**Contact:**

☎ 020 8289 4701

✉ collegeadmissions@beckmead.croydon.sch.uk

🌐 [www.beckmeadfamilyofschools.org](http://www.beckmeadfamilyofschools.org)

#### Bensham Manor

A special community mixed school for young people with complex learning needs and autism.

**Contact:**

☎ 020 8684 0116

✉ theoffice@benshammanor.com

🌐 [www.benshammanor.co.uk](http://www.benshammanor.co.uk)

#### Croydon College

Croydon College is a Further Education college with a wide range of professional and technical programmes.

**Croydon Pathways** is a programme (for young people aged 19+) delivered between Croydon College (at the Coulsdon site) and Waddon Centre. The provision is a bespoke individualised programme for young people who have severe and complex needs. There is a focus on educational progress alongside the development of life skills and inclusion in their local community, and is a bridge from education into adult life. Referrals to Croydon Pathways should be made via the allocated EHCP Coordinator.

**Contact:**

☎ 020 8760 5934

✉ admissions@croydon.ac.uk

🌐 [www.croydon.ac.uk](http://www.croydon.ac.uk)

#### Coulsdon College

Coulsdon Sixth Form College specialises in providing high quality education for 16-19 year old students in a supportive and caring community and is committed to equality of rights and opportunity.

**Contact:**

☎ 01737 551176

✉ enquiries@coulsdon.ac.uk

🌐 [www.coulsdon.ac.uk](http://www.coulsdon.ac.uk)

#### John Ruskin College

John Ruskin is an inclusive mainstream college and we aim to meet the needs of students with special educational needs (SEN) or disability who meet our entry criteria.

**Contact:**

☎ 020 8651 1131

✉ info@johnruskin.ac.uk

🌐 [www.johnruskin.ac.uk](http://www.johnruskin.ac.uk)

#### Priory Post 16 Centre

Mixed school for young people with severe learning difficulties and / or autism.

**Contact:**

☎ 020 8653 8222

✉ admin@priorycroydon.org.uk

🌐 [www.priorycroydon.org.uk](http://www.priorycroydon.org.uk)

#### St. Giles School

Mixed school for young people with profound physical disabilities and complex medical needs.

**Contact:**

☎ 020 8680 2141

✉ office@st-giles.croydon.sch.uk

🌐 [www.st-gilesschool.co.uk](http://www.st-gilesschool.co.uk)

## BACK TO CONTENTS

1

Getting Started

2

Traineeships, Apprenticeships & Jobs

3

Advice for Pupils with Special Educational Needs or Disabilities (SEND) or Additional Support Needs

4

Application Form

5

Vocational, A Level and GCSE Course Listings

6

School and College Sixth Forms in Croydon

### Croydon Adult Learning & Training (CALAT)

CALAT offers courses for people with additional support needs. **What type of programmes do we offer?**

16-19 year old Study Programme, Work placement, Vocational or employability qualification, English & Maths and 1-1 support from a CALAT mentor.

CALAT also offer creativity & wellbeing courses such as: Rambling, Home Baking, Gardening, Mosaics and many more. As well as creative courses if you need to develop your everyday skills we offer students courses in Developing ICT and communication skills, Relationships and health, Exploring places of interest using media, Creative Multimedia and Managing money.

In addition to the above CALAT also offers E3 Award in Employability Skills: Caring for you & your community; City & Guilds E3 Award in employability: Money and Movement; City and Guilds E3 Award in employability skills; Preparing to work in Hospitality and OCR E3 Award in ICT: Advanced computers

#### Contact:

☎ 020 8726 7777  
 ✉ [calat.aldd@croydon.gov.uk](mailto:calat.aldd@croydon.gov.uk) or  
 ✉ [Dolores.Collins@croydon.gov.uk](mailto:Dolores.Collins@croydon.gov.uk)  
 🌐 [www.calat.ac.uk](http://www.calat.ac.uk)



### Croydon Works



Croydon Works is Croydon's Job and Training Hub! We have been operating since 2016 as the primary free recruitment service. Our service works with businesses in and around the Croydon area who are looking to find local, skilled and experienced talent.

Our focus as a service is to support our residents with a wide range of pathways into employment. We have knowledgeable and sector specific Brokerage Officers to engage with employers and residents, who respond to the job market needs.

We host training in a range of areas such as: Employability, Customer Service, Security, Construction, Hospitality and many more. Furthermore, we treat apprenticeships as a top priority and understand the importance of gaining vocational qualifications, also working with the Croydon Apprenticeship Academy.

If you aren't sure of which path you want to take, one of our Officers will have a look at your experience and skillset, to see what sector or career path will fit you best. They may also identify any training or volunteering experience you may need to further your job search.

Croydon Works engages with residents who have a range of experience and are from all walks of life, so wherever you are in your career path get in touch with the team to see how we can help.

#### Contact:

☎ 0208 255 2724 / 0208 255 2725  
 ✉ [info@croydonworks.co.uk](mailto:info@croydonworks.co.uk)  
 🌐 [www.croydonworks.co.uk](http://www.croydonworks.co.uk)

If you are 18+, the Youth Obligation Support Programme at Job Centre Plus aims to support young people into employment, work with training or an Apprenticeship.

You will:

- 🕒 Attend a series of workshops that will help to prepare for your next step and then
- 🕒 Get intensive, personalised support that fits your needs whilst you look for work.

#### Contact:

☎ 0800 169 0190  
 🌐 <https://los.direct.gov.uk/>

## BACK TO CONTENTS

### 1

Getting Started

### 2

Traineeships, Apprenticeships & Jobs

### 3

Advice for Pupils with Special Educational Needs or Disabilities (SEND) or Additional Support Needs

### 4

Application Form

### 5

Vocational, A Level and GCSE Course Listings

### 6

School and College Sixth Forms in Croydon

Your EHCP Co-ordinator will always work to find you the most appropriate placement. Sometimes this means that you might have to go a college outside of Croydon.

The colleges listed below are just some of the colleges that you could go to; also where former Croydon students have gone to.

#### Bromley College

Rookery Lane, Bromley BR2 8HE

☎ 020 3954 4000 📧 studenthub@lsec.ac.uk  
🌐 www.lsec.ac.uk

#### Capel Manor College

Crystal Palace Park campus / Mottingham campus

London's only specialist environmental college, offering a diverse range of full and part time courses. The college offer personalised support on all courses.

☎ 0303 003 1234 ext. 1173 📧 study@capel.ac.uk  
🌐 www.capel.ac.uk

#### East Surrey College

London Rd, Redhill RH1 2JX

☎ 01737 772611 📧 email: clientservices@esc.ac.uk  
🌐 website: www.esc.ac.uk

#### Kingston College

Kingston Hall Rd, Kingston upon Thames KT1 2AQ

☎ 020 8546 2151  
📧 email: info@kingston-college.ac.uk  
🌐 website: www.kingston-college.ac.uk

#### Lambeth College

45 Clapham Common South Side,  
Clapham Common, London SW4 9BL

☎ 020 7501 5000  
📧 email: courses@lambethcollege.ac.uk  
🌐 website: www.lambethcollege.ac.uk

#### North East Surrey College (NESCOT)

Reigate Rd, Epsom KT17 3DS

☎ 020 8394 1731 🌐 www.nescot.ac.uk  
📄 www.nescot.ac.uk/about-nescot/contact-us/

#### Reigate College

Castlefield Rd, Reigate RH2 OSD

☎ 01737 221 118 📧 email: enquiries@reigate.ac.uk  
🌐 website: www.reigate.ac.uk

#### South Thames College: Carshalton campus

Nightingale Road, Carshalton, Surrey, SM5 2EJ

☎ 020 8544 4444  
📧 email: admissions@carshalton.ac.uk  
🌐 website: www.carshalton.ac.uk

#### South Thames College: Merton campus

London Road, Morden SM4 5QX

☎ 020 8918 7777 📧 email: info@merton.ac.uk  
🌐 website: www.merton.ac.uk

#### South Thames College: Tooting campus

71 Tooting High Street, London SW17 0TQ

☎ 020 8918 7777  
📧 email: info@south-thames.ac.uk  
🌐 website: www.south-thames.ac.uk

#### South Thames College:

Wandsworth Campus

Wandsworth High Street, London SW18 2PP

☎ 020 8918 7777 📧 email: info@south-thames.ac.uk  
🌐 website: www.south-thames.ac.uk

#### Southwark College

25 The Cut, London, SE1 8LF

☎ 020 3757 4000 📧 info@southwark.ac.uk  
🌐 www.southwark.ac.uk

#### Westminster Kingsway College

Address: 211 Grays Inn Road, London, WC1X 8RA

☎ 020 7963 4181  
📧 email: courseinfo@westking.ac.uk  
🌐 website: www.westking.ac.uk

**Please note this is not an exhaustive list of options outside of Croydon.**



## BACK TO CONTENTS

1

Getting Started

2

Traineeships, Apprenticeships &amp; Jobs

3

Advice for Pupils with Special Educational Needs or Disabilities (SEND) or Additional Support Needs

4

Application Form

5

Vocational, A Level and GCSE Course Listings

6

School and College Sixth Forms in Croydon

### Just to let you know:

You are able to request a place with an independent school or college or further education provider. The SEN team will consider your request and make a decision as to whether the placement is suitable and whether you can access a similar provision in a local maintained placement.

**The Croydon Transition Team** support young people between 14 and 25 years of age with severe and complex needs and disabilities making the transition from childhood to adulthood.

The team work directly with the young person and their family/carers to ensure that their views, wishes and feelings are central in the planning of their future life as an adult.

The Croydon Transition Team will ensure that parents/carers are involved in every step of the process by sharing knowledge and information, enabling them, along with their child, to make informed decisions about their child's future.

#### We will:

- ② Support the young person and their parents/carers.
- ② Help plan for the young person's future when they leave school.
- ② Provide the right information at the right time.
- ② Make sure that the young person and their parents'/carers' views are heard.
- ② Offer a carer's assessment.

#### We work with:

- ② SEN/LDD Personal Advisors.
- ② Children's & Adult Social Care.
- ② Schools and colleges.
- ② Further & Higher education.
- ② Voluntary organisations.
- ② Health.
- ② Benefits.
- ② Croydon Works.

#### We can also give information on:

- ② Leisure activities.
- ② Housing.

### Eligibility

In order to receive support from the Croydon Transition Team, the young person will need to be a resident of the London Borough of Croydon and meet eligibility criteria for either children's or adult social care, dependent on age (14 to 18 for children's social care, 18 to 25 for adult social care).

### If eligible, we are able to provide a range of services including, but not limited to:

- ② support available in the home
- ② respite services for parents either at home or in a different setting.
- ② supported living or specialist residential placements.

For more information on how we can help please see: <https://localoffer.croydon.gov.uk>

### Travel

Most students aged 16+, (except those with severe learning difficulties or profound and multiple learning difficulties) will be assessed to find out whether you are suitable for the travel training programme.

If you successfully complete the travel training programme, this will be great for your confidence and independence. It will also mean that you can more easily get to education, training, employment opportunities or other day to day activities.

If the travel training programme is not appropriate for you, your family may be given a personal transport budget to make private travel arrangements to the nearest education establishment offering your chosen course of study. The local authority will work with your family to find the best travel solution.

It might be that you are eligible for council provided transport, e.g. for students with severe or profound and multiple learning difficulties and this may be considered the best option to support you getting to school or college.

To find out more about and also how to apply for support with your travel, please contact:

**Samer Adbis:** 📧 [samer.adis@croydon.gov.uk](mailto:samer.adis@croydon.gov.uk) or

**Koreen Sinclair:** 📧 [koreen.sinclair@croydon.gov.uk](mailto:koreen.sinclair@croydon.gov.uk)

# Moving from secondary school to further education

## Timeline of key activities for transfer of Young People in Year 11 with EHC plans

BACK TO CONTENTS

1

Getting Started

2

Traineeships, Apprenticeships & Jobs

3

Advice for Pupils with Special Educational Needs or Disabilities (SEND) or Additional Support Needs

4

Application Form

5

Vocational, A Level and GCSE Course Listings

6

School and College Sixth Forms in Croydon

Year 9 and 10

Meeting with someone in school to discuss career options.

You could attend some open days at several local post-16 educational providers to see what they can offer you.

Information about local further educational providers can be found on the Croydon SEND Local Offer. You can also look on each college provider's website <https://localoffer@croydon.gov.uk> to find out about their SEND Provision.

Year 11 September

Your EHCP co-ordinator will write to you and send you a form so you can tell us where you would like to study next year.

Year 11  
No later than  
23rd October

Deadline to return FE preference form

If you and your parents are not able to meet this deadline, you should notify your EHCP co-ordinator to seek further advice and support.



\*The LA SEND Service manage the Year 11 transfer process for children with Education Health Care plans. You may be also be asked to complete the college provider's application form.

# Moving from secondary school to further education

## Timeline of key activities for transfer of Young People in Year 11 with EHC plans

**Year 11  
Autumn/Spring  
Term**

Your co-ordinator will contact the providers listed on your preference form.

Placement decisions are made with due regard for your preference and consideration of whether the provider can offer a suitable education which is compatible with efficient use of resources and education of others.

- Suitable education that is compatible with the efficient use of resources and education of others.
- Whether the school can provide a suitable education which is compatible with the efficient use of resources and education of others.
- Decisions about school placements are made with due regard for parental preference and consideration of whether the school can provide a suitable education which is compatible with the efficient use of resources and education of others.

**No later  
31 March  
(Year 11)**

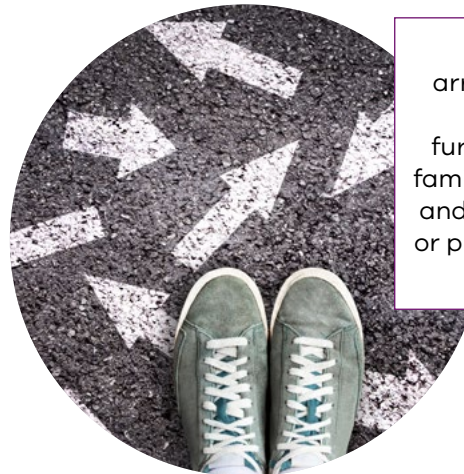
**Amended  
EHC plan issued  
naming further  
educational  
placement**

You and your parents have the right to appeal if you do not agree with the provider named.

**Year 11  
Summer  
Term**

Joint communication with further educational placement and secondary school to discuss what has worked well and other actions to enable successful transition to Year 12, including agreement on EHC outcomes at the end of FE and the support required to meet these outcomes and agree outcomes with staff from the primary and new secondary for (name) the end of key stage 3 (Year 9) and any changes in provision that may be needed in the secondary school.

Enhanced transition arrangements might include additional visits to the further educational provider, familiarisation with the building and routines, daily events and/or practising the journey to and from the location.



### **Travel assistance to and from FE provider.**

You do not automatically qualify for travel assistance. Once a FE establishment has been named you can apply for travel assistance. Each request is considered on an individual basis based on eligibility criteria.

**BACK TO  
CONTENTS**

**1**

Getting Started

**2**

Traineeships,  
Apprenticeships  
& Jobs

**3**

Advice for Pupils with  
Special Educational  
Needs or Disabilities  
(SEND) or Additional  
Support Needs

**4**

Application  
Form

**5**

Vocational, A Level  
and GCSE Course  
Listings

**6**

School and College  
Sixth Forms  
in Croydon

## BACK TO CONTENTS

1

Getting Started

2

Traineeships, Apprenticeships & Jobs

3

Advice for Pupils with Special Educational Needs or Disabilities (SEND) or Additional Support Needs

4

Application Form

5

Vocational, A Level and GCSE Course Listings

6

School and College Sixth Forms in Croydon



## September

Research your options. What would you like to do and where? Does this option fit with your predicted grades?

Ask for advice! You can talk to your tutor, your school Careers Adviser tutors or your teacher.

Contact the places you're interested in and plan a visit.

With your parent / carer, complete the Local Authority's Preference Form and send it to [EHCPschooltransfers@croydon.gov.uk](mailto:EHCPschooltransfers@croydon.gov.uk)

With the help of your parent / carer, open a bank account ideally, before you turn 16.



## October

**You will need to identify your preferred course and college / post 16 placement by 23 October 2020.**

This is when you should submit an early application for your chosen course to avoid disappointment.

Start preparing for your interviews (see [page 8](#)) for some tips.

It might be worth doing some work experience during the Christmas holidays – start making applications now.



## November

**Go to open days!**

Find out what support is available for you and how to get it. If available, attend taster days/ transition meetings with the provider.

Some colleges and 6th forms start interviewing this month.



## December

The end of term is the ideal time to have submitted all of your applications.



## January

Think about a back-up plan!

If you need support with your travel, find out more by looking up travel training on [www.croydon.gov.uk](http://www.croydon.gov.uk).



## February

If you're thinking about starting an Apprenticeship, now is a good time to research the different Apprenticeships available (see [page 13 for more information](#)). Also make sure your CV is up to date.

You might be entitled to money that can support you if you carry on studying or start an Apprenticeship – this is called a 16-19 Bursary Fund. See [page 9 for more information](#).



## Before the Easter holiday

Check costs of courses, books, field trips and transport.



## After the Easter holiday

If you are looking for an Apprenticeship or Traineeship, now is the time to keep on top of this!

**31 May is the deadline for travel assistance applications!**

6th Forms may have an induction day during June.

**If you are in Yr. 11, your official last day of school is the last Friday in June. Only after this date, can you start working full-time or start an Apprenticeship.**

If you would like to find out more, please contact the SEND Team:

☎ 020 8604 7263

✉ [SENenquiries@croydon.gov.uk](mailto:SENenquiries@croydon.gov.uk)

🌐 <https://localoffer.croydon.gov.uk>

## BACK TO CONTENTS

# 1

Getting Started

# 2

Traineeships,  
Apprenticeships  
& Jobs

# 3

Advice for Pupils with  
Special Educational  
Needs or Disabilities  
(SEND) or Additional  
Support Needs

# 4

Application  
Form

# 5

Vocational, A Level  
and GCSE Course  
Listings

# 6

School and College  
Sixth Forms  
in Croydon

# Application Form and Course Listings (Academic and Vocational)

This information is accurate at the time of going to print. Please refer to college / sixth form prospectuses / websites for up-to-date information on course availability and full course details.

## Ready to apply?

You can either

or

Complete a standard application form (see next page)



Use the school's or college's own (online) application form

1. You can use this form to apply to up to 2 A-level or vocational courses. If applying to more than 2 courses, you will need to make copies of this application form.
2. Read through the form, so that you are sure of the information you need.
3. Complete your personal statement in a word document and then copy this into your application form.
4. Copy the blank form a few times, so that you have spare copies\*.
5. In BLOCK CAPITALS and in black ink, complete Parts A, B and your subject list in Part C.
6. Make sure the form is fully completed. (Is section B signed and dated?)
7. Your school will complete the remaining part of Section C and D. This might be your tutor or your Head of Year – check!
8. Make a copy of your form to keep for yourself. You will need it to refer to if you are invited to interview.
9. Send the form to the school or college.

\*this form can be completed and printed online: <https://youngcroydon.org.uk/post-16-prospectus/>

1. Follow the application instructions given by the school or college in their prospectus / on their website.
2. Before completing your form, have your chosen course information to hand.
3. Complete your personal statement in a word document and then copy and paste' this into your application form.
4. Make sure you have completed everything on the form. Are signatures needed? Can your reference from school be submitted separately?
5. Make a copy of your form to keep for yourself. You will need it if you are invited to interview.
6. Send / email the form to your school or college.

### Remember!

- Some courses fill up very quickly.
- You should ideally send in your applications before the Christmas holiday, but **check whether there is an application deadline for the school or college you are applying to.**
- Always keep a copy of the application forms you send.

BACK TO CONTENTS

1

Getting Started

2

Traineeships, Apprenticeships & Jobs

3

Advice for Pupils with Special Educational Needs or Disabilities (SEND) or Additional Support Needs

4

Application Form

5

Vocational, A Level and GCSE Course Listings

6

School and College Sixth Forms in Croydon

# Choosing what to study and where to go

## WHAT TO STUDY

Regardless of your academic achievement level, there are a wide range of course options available to you. Use the table below to work out what you could do after Year 11.

If you...	You can do...	Example qualifications	It will take...	And then you can do...
Don't have any qualifications	Entry Level courses	Foundation Learning Entry Level Awards, Certificates or Diplomas	Different amounts of time depending on which qualification you do; check with your college or training centre	Level 1 courses Traineeships
Have a few qualifications	Level 1 courses	Traineeships • Level 1 Diplomas • Personal Development programmes • Skills for working life	Up to 1 year	Level 2 courses
Have 3 – 5 GCSEs mostly grades 3 – 2 or at least a merit for a full Level 1 course	Level 2 courses	GCSEs • BTEC First Award / Certificate or Diploma • Cambridge Technicals • Intermediate Apprenticeship	Up to 1 year	Employment Level 3 courses
Have 5+ GCSEs grade 9 – 4 (including Maths & English) or at least a merit for a full Level 2 course	Level 3 courses	A Levels IB • Pre-U • Bacc Level 3 Award, Certificate or Diploma Cambridge Technicals Advanced Apprenticeship	Up to 2 years	University Specialist training Higher Apprenticeship Employment

## WHERE TO GO

The following pages give you an idea of places you can study within Croydon; you can of course choose to go to a school or college outside of Croydon. Wherever you decide to apply to, be sure to check the grade requirements at each school or college.



See page 7 for things to think about when choosing where to study.

BACK TO CONTENTS

1

Getting Started

2

Traineeships, Apprenticeships & Jobs

3

Advice for Pupils with Special Educational Needs or Disabilities (SEND) or Additional Support Needs

4

Application Form

5

Vocational, A Level and GCSE Course Listings

6

School and College Sixth Forms in Croydon

## BACK TO CONTENTS

1

Getting Started

2

Traineeships, Apprenticeships & Jobs

3

Advice for Pupils with Special Educational Needs or Disabilities (SEND) or Additional Support Needs

4

Application Form

5

Vocational, A Level and GCSE Course Listings

6

School and College Sixth Forms in Croydon



SCHOOL/ORGANISATION	DATE	TIME
<b>2020-2021</b>		
<b>SEPTEMBER 2020</b>		
John Ruskin College	Saturday 5 September 2020	10am - 1pm
Norbury Manor Business & Enterprise College	Friday 23 September 2020	5pm - 8pm
John Ruskin College	Wednesday 30 September 2020	5pm - 8pm
<b>OCTOBER 2020</b>		
Coloma Convent Girls School	Tuesday 6 October 2020	5pm - 7:30pm
Croydon College	Wednesday 7 October 2020	4:30pm - 6:30pm
Norbury Manor Business & Enterprise College	Wednesday 7 October 2020	6pm - 8.30pm
Harris Invictus Academy Croydon	Thursday 8 October 2020	5pm - 7pm
Coulsdon College	Saturday 10 October 2020	10am - 1pm
Harris Academy Crystal Palace	Tuesday 13 October 2020	5pm - 7pm
St Joseph's College	Tuesday 13 October 2020	5:30pm - 7:30 pm
Harris Academy Purley	Thursday 15 October 2020	5pm - 8pm
Archbishop Tenison's CofE Sixth Form	Wednesday 21 October 2020	6:00pm - 8:00pm
John Ruskin College	Thursday 22 October 2020	5:30pm - 8pm
Oasis Academy Shirley Park	Thursday 22 October 2020	6pm - 8pm
Woodcote High School	Thursday 22 October 2020	6pm - 8.30pm
<b>NOVEMBER 2020</b>		
Croydon College	Saturday 7 November 2020	10:00am - 1:00pm
Shirley High School Performing Arts College	Tuesday 10 November 2020	6pm - 8pm
Harris Academy South Norwood	Wednesday 18 November 2020	5:30pm - 7pm
Coombe Wood School Sixth Form	Thursday 19 November 2020	5:00pm - 8:00pm
Coulsdon College	Thursday 19 November 2020	5:30pm - 8pm
Harris Academy Professional Skills	Thursday 19 November 2020	5pm - 7:30pm
John Ruskin College	Saturday 21 November 2020	10am - 2pm



## BACK TO CONTENTS

1

Getting Started

2

Traineeships, Apprenticeships &amp; Jobs

3

Advice for Pupils with Special Educational Needs or Disabilities (SEND) or Additional Support Needs

4

Application Form

5

Vocational, A Level and GCSE Course Listings

6

School and College Sixth Forms in Croydon



SCHOOL/ORGANISATION	DATE	TIME
<b>MARCH 2021</b>		
John Ruskin College	Wednesday 3 March 2021	5:30pm – 7:30pm
Coulsdon College	Wednesday 3 March 2021	5:30pm – 7:30pm
Coulsdon College	Wednesday 10 March 2021	5:30pm – 7:30pm
Coulsdon College	Wednesday 17 March 2021	5:30pm – 7:30pm
Croydon College	Thursday 25 March 2021	4:30pm – 6:30pm
<b>JUNE 2021</b>		
John Ruskin College	Saturday 19 June 2021	10am – 1pm
Croydon College	Wednesday 30 June 2021	4:30pm – 6:30pm
<b>GO TO WEBSITE FOR ONLINE OPEN EVENT DATES</b>		
Capel Manor College	<a href="http://www.capel.ac.uk">www.capel.ac.uk</a>	
Norbury Manor Business & Enterprise College	Appointment only Open Event. Saturday 26 September 2020. Call 020 8679 0062 to book an appointment.	
Riddlesdown Collegiate	<a href="http://www.riddlesdown.org">www.riddlesdown.org</a>	
The BRIT School	<a href="http://www.brit.croydon.sch.uk">www.brit.croydon.sch.uk</a>	
The Quest Academy	<a href="http://www.thequestacademy.org.uk">www.thequestacademy.org.uk</a>	
Thomas More Catholic School	<a href="http://www.tmore.org.uk">www.tmore.org.uk</a>	

### To get the most out of Open Events

- ⊗ Attend a few, even if you have a strong idea of where you want to go and which course(s) you want to study.
- ⊗ Find out whether the school or college offer course tasters; you can find out even more about the subject(s) you are interested in.
- ⊗ Find out what the specific grade / entry requirements are for your chosen course(s).
- ⊗ Make a list of the pros and cons of being a student at that particular school or college once you've finished the Open Event; this will help you decide whether you want to apply there.
- ⊗ Make a point of speaking to current students to find out what they like about studying there.
- ⊗ If you're not available at the advertised time of an Open Event, there may be another scheduled. Contact the school or college to find out if you're able to visit at another time.

This standard application form can be used to apply to any of the schools or colleges listed in this prospectus. Make as many copies as you need and ensure that you check the individual school / college pages for application information and deadlines.

### Please complete in **BLOCK CAPITALS** and in **BLACK INK**

**Data Protection** – To see how we use your personal information, see [www.croydon.gov.uk/democracy/data-protection-freedom-information/privacy-notices/education-youth-engagement-service-privacy-notice](http://www.croydon.gov.uk/democracy/data-protection-freedom-information/privacy-notices/education-youth-engagement-service-privacy-notice). Contact schools / colleges / training centres to find out how they process your personal information.

### PART A: Personal Details

Surname:

Other names (in full):

Date of birth:        /        /

**Gender:** I identify as: Male    Female    Genderqueer    non-binary    Other    Prefer not to disclose

Address:

Postcode

E-mail:

Home Telephone:

Mobile:

Parent/carer Mobile:

Current School:

Start date at current school:        /        /        Date of leaving:        /        /

Parents' or guardians' names and titles (e.g. Mr. and Mrs.)

Parents' or guardians' email address:

Nationality:

Have you lived in the UK/EU for the last three years?    Yes, UK    Yes, EU    No

If no, how long have you been resident?        years        months

**Ethnic Origin: please tick one box (Please note: this information is used solely to support colleges'/schools' Equal Opportunities Policies.)**

Asian or Asian British – Bangladeshi

Asian or Asian British – Indian

Asian or Asian British – Pakistani

Asian or Asian British – Any other

Asian background

Black or Black British – African

Black or Black British – Caribbean

Black or Black British – Any other Black background

Chinese

Mixed – White and Asian

Mixed – White and Black African

Mixed – White and Black Caribbean

Mixed – Any other Mixed background

White – British

White – Irish

White – any other White background

Any other

Not Known/Prefer not to disclose

Please tick if you have a special educational need or disability and/or would need additional support at interview. If so, please let us know how we can support you.

**BACK TO CONTENTS**

**1**

Getting Started

**2**

Traineeships, Apprenticeships & Jobs

**3**

Advice for Pupils with Special Educational Needs or Disabilities (SEND) or Additional Support Needs

**4**

Application Form

**5**

Vocational, A Level and GCSE Course Listings

**6**

School and College Sixth Forms in Croydon

**BACK TO  
CONTENTS**

**1**

Getting  
Started

**2**

Traineeships,  
Apprenticeships  
& Jobs

**3**

Advice for Pupils with  
Special Educational  
Needs or Disabilities  
(SEND) or Additional  
Support Needs

**4**

Application  
Form

**5**

Vocational, A Level  
and GCSE Course  
Listings

**6**

School and College  
Sixth Forms  
in Croydon

### PART B: 6th Form College & Course Choice

You can use this form to apply to several places listed in this prospectus if you wish. You will need to make additional blank copies if you are doing this.

Name of college / 6th form:

Qualification	Level	Subject(s)
BTEC	2	Diploma in Creative Media Production

Please tell us why you are applying for this (these) course(s) and why you think you would be suitable?

Student's signature

Parent's/Guardian's signature

Date:

**BACK TO CONTENTS**

**1**

Getting Started

**2**

Traineeships, Apprenticeships & Jobs

**3**

Advice for Pupils with Special Educational Needs or Disabilities (SEND) or Additional Support Needs

**4**

Application Form

**5**

Vocational, A Level and GCSE Course Listings

**6**

School and College Sixth Forms in Croydon

**PART C: Examinations working towards or completed**

Subject	Examination Level	Date of Exam	Estimated Grade	Actual Grade
EXAMPLE. English Language	GCSE	06/20	6	
EXAMPLE. Maths	GCSE	06/20		4
EXAMPLE. Hospitality and Catering	BTEC L2	06/20		MMM

**ATTENDANCE**

Percentage:

Comments:

**PUNCTUALITY**

Percentage:

Comments:

**SUPPORT NEEDS / EXTERNAL AGENCY INVOLVEMENT (please tick)**

Looked After Child      Emotional/behavioural needs      Mental Health      Visual impairment  
Hearing impairment      Wheelchair User      Restricted mobility  
English as an additional language (EAL)      Gifted      Talented      None  
Other Please state

**SPECIFIC LEARNING DISABILITY** Please specify:

**OTHER SEN CONSIDERATIONS:**

Please include with this reference any copies of:

- Details of any external agency involvement
- Education Health and Care Plan
- IEP/PEP

**PART D: School Report**

If the applicant's support is co-ordinated by a named person please supply contact details:

**WORK EXPERIENCE PLACEMENT**

Worked extremely well      Tried hard      Struggled at times      Days completed .....

Did not want to do work experience      Did not complete work experience (please comment below)

**INTERESTS AND ACHIEVEMENTS IF KNOWN**

IN SCHOOL

OUT OF SCHOOL

**SUITABILITY FOR COURSE(S) APPLIED FOR**

When considering suitability of the course(s) applied for, please refer to the qualifications grid on page 31.

Very suitable

Suitable  
some reservationsSuitable with  
type/levelUnsuitable  
course**ADDITIONAL COMMENTS**

Name of referee:

Position held:

Contact email and tel:

Signature:

Date:

**BACK TO CONTENTS****1**

Getting Started

**2**Traineeships,  
Apprenticeships  
& Jobs**3**Advice for Pupils with  
Special Educational  
Needs or Disabilities  
(SEND) or Additional  
Support Needs**4**Application  
Form**5**Vocational, A Level  
and GCSE Course  
Listings**6**School and College  
Sixth Forms  
in Croydon

**BACK TO CONTENTS**

1

Getting Started

2

Traineeships, Apprenticeships &amp; Jobs

3

Advice for Pupils with Special Educational Needs or Disabilities (SEND) or Additional Support Needs

4

Application Form

5

Vocational, A Level and GCSE Course Listings

6

School and College Sixth Forms in Croydon

## KEY

Note: Vocational A levels are listed in the A level tables

	Archbishop Tenison's	Capel Manor College	Coloma Convent Girls' School	Coombe Wood Sixth Form	Coulson Sixth Form College	Croydon College	Harris Professional Skills SF	Harris Sixth Form	John Ruskin College	Norbury Manor BEC	Oasis Academy Shirley Park	The Quest Academy	Riddlesdown Collegiate	Shirley High School	St Joseph's College	The BRIT school	Thomas More Catholic School	Woodcote High School
<b>Animal Care and Management</b>																		
Introduction to Animal Care (Level 1)	☆																	
Animal Care Diploma (Level 2)	☆																	
Animal Management Advanced Diploma (Level 3)	☆																	
<b>Art, Design and Fashion</b>																		
Art & Design Level 1						☆												
Art & Design Level 2					☆	☆		☆										
Art & Design Level 3					☆	☆	☆		☆					☆	☆		☆	
Animation and Visual Effects Level 3						☆												
Creative Digital Media Production Level 2					☆				☆									
Creative Digital Media Production Level 3					☆				☆						☆			
Creative Digital Media Production (Games Design) Level 3									☆									
Fashion (Certificate in Art & Design) Level 2						☆												
Fashion & Media Make Up Level 3									☆									
Fashion Design and Production Level 3						☆												
Fashion Level 3					☆													
Games and Animation Level 2						☆												
Graphic Design Level 3									☆									
Graphics and Illustration Level 2						☆												
Photography Level 3						☆		☆										
UAL Level 3 Extended Diploma In Art & Design																	☆	
<b>Business, IT &amp; Law</b>																		
AAT Accountancy & Business Level 2									☆									
AAT Accountancy & Business Level 3									☆									
Business Level 1							☆											
Business Level 2						☆	☆	☆	☆									
Business Level 3						☆	☆	☆	☆		☆	☆		☆	☆			
Business Management Level 3									☆									
Business Management /Marketing/ Law Level 3									☆									
Business BTEC Level 3 Extended Certificate (Single Award)		☆																

**BACK TO CONTENTS**

1

Getting Started

2

Traineeships, Apprenticeships &amp; Jobs

3

Advice for Pupils with Special Educational Needs or Disabilities (SEND) or Additional Support Needs

4

Application Form

5

Vocational, A Level and GCSE Course Listings

6

School and College Sixth Forms in Croydon

## KEY

Note: Vocational A levels are listed in the A level tables

	Archbishop Tenison's	Capel Manor College	Coloma Convent Girls' School	Coombe Wood Sixth Form	Coulsdon Sixth Form College	Croydon College	Harris Professional Skills SF	Harris Sixth Form	John Ruskin College	Norbury Manor BEC	Oasis Academy Shirley Park	The Quest Academy	Riddlesdown Collegiate	Shirley High School	St Joseph's College	The BRIT school	Thomas More Catholic School	Woodcote High School
Business Enterprise Level 2						☆												
Business Enterprise Level 3						☆												
Introduction to Business Level 1						☆												
Introduction to Business and IT Level 1						☆												
IT Level 3					☆										☆			
IT/Computing Level 2					☆	☆		☆										
IT/Computing Level 3					☆	☆	☆	☆			☆				ü			
Law Level 3					☆													
Legal Executive Level 2								☆										
<b>Construction, Engineering &amp; Science</b>																		
Aeronautical Engineering Level 3								☆										
Applied Science									☆									
Applied Science Level 2								☆										
Applied Science Level 3					☆		☆	☆							☆			
Applied Science (Forensic) Level 3								☆										
Applied Science (Medical) Level 3					☆			☆										
Entry Level 3 Work skills for Construction						☆												
Carpentry/Joinery Level 1							☆											
Carpentry Level 2						☆	☆											
Construction Level 1 Multi Skills						☆												
Construction Level 2 Building Maintenance						☆												
Construction Level 3 BTEC						☆												
Construction Level 1							☆	☆										
Construction Level 2							☆											
Construction Level 3								☆										
Construction & the Built Environment Level 3								☆										
Electrical Installation Level 1						☆												
Electrical / Electronic Engineering Level 3								☆										
Electrotechnical Technology Level 1						☆												

**BACK TO CONTENTS**

1

Getting Started

2

Traineeships, Apprenticeships &amp; Jobs

3

Advice for Pupils with Special Educational Needs or Disabilities (SEND) or Additional Support Needs

4

Application Form

5

Vocational, A Level and GCSE Course Listings

6

School and College Sixth Forms in Croydon

## KEY

Note: Vocational A levels are listed in the A level tables

	Archbishop Tenison's	Capel Manor College	Coloma Convent Girls' School	Coombe Wood Sixth Form	Coulsdon Sixth Form College	Croydon College	Harris Professional Skills SF	Harris Sixth Form	John Ruskin College	Norbury Manor BEC	Oasis Academy Shirley Park	The Quest Academy	Riddlesdown Collegiate	Shirley High School	St Joseph's College	The BRIT school	Thomas More Catholic School	Woodcote High School
Electrotechnical Installation Level 2						☆												
Electrotechnical Installation Level 3						☆												
Engineering Level 1						☆												
Engineering Level 2						☆	☆	☆										
Engineering Level 3	☆				☆	☆		☆		☆				☆	☆			
Forensic Science										☆								
Mechanical / Manufacturing Engineering Level 3									☆									
Medical Science Level 3 (Applied)					☆													☆
Motor Vehicle Studies Level 3						☆												
Plumbing Level 1						☆	☆		☆									
Plumbing Level 2						☆	☆		☆									
Science Level 2					☆	☆	☆											
Science Level 3					☆	☆	☆				☆	☆		☆				
Vehicle Maintenance IMI Level 1						☆												
Vehicle Maintenance IMI Level 2						☆												
<b>Hair, Barbering and Beauty</b>																		
Beauty Therapy Level 2						☆			☆									
Body & Spa Therapy Level 3						☆			☆									
Hairdressing Level 2						☆			☆									
Hairdressing Level 3						☆			☆									
Hair & Beauty Level 1						☆												
Hair & Media Makeup Level 2									☆									
Hair & Media Makeup Level 3									☆									
Theatrical Special Effects Media Makeup Level 3									☆									



# Vocational Course Listings

**BACK TO CONTENTS**

**1**

Getting Started

**2**

Traineeships, Apprenticeships & Jobs

**3**

Advice for Pupils with Special Educational Needs or Disabilities (SEND) or Additional Support Needs

**4**

Application Form

**5**

Vocational, A Level and GCSE Course Listings

**6**

School and College Sixth Forms in Croydon

## KEY

Note: Vocational A levels are listed in the A level tables

## Health & Social Care

	Archbishop Tenison's	Capel Manor College	Coloma Convent Girls' School	Coombe Wood Sixth Form	Coulsdon Sixth Form College	Croydon College	Harris Professional Skills SF	Harris Sixth Form	John Ruskin College	Norbury Manor BEC	Oasis Academy Shirley Park	The Quest Academy	Riddlesdown Collegiate	Shirley High School	St Joseph's College	The BRIT school	Thomas More Catholic School	Woodcote High School	
Childcare/Early Years Level 1						☆													
CACHE Childcare /Early Years Level 2									☆										
CACHE Childcare/Early Years Level 3									☆										
CACHE Early Years Practitioner Level 2									☆										
CACHE Early Years Educator Level 3									☆										
Criminology										☆									
Early Years: Education Introduction Level 2						☆													
Early Years Workforce Level 3						☆													
Health and/or Social Care Level 1						☆													
Health and/or Social Care Level 2					☆	☆	☆		☆				☆						
Health and/or Social Care Level 3	☆			☆	☆	☆	☆	☆	☆	☆	☆	☆		☆	☆				
Health & Social Care BTEC Level 3 Extended Certificate (Single Award)			☆																☆
Health & Social Care BTEC Level 3 Diploma (Double Award)			☆																
Public Services Level 2					☆				☆										
Public Services Level 3					☆				☆				☆						
Public Services Level 2 (Uniformed)						☆													
Public Services Level 3 (Uniformed)					☆	☆													
Psychology BTEC Level 3					☆														
Skills for Working In Health And Social Care Level 2									☆										

**BACK TO CONTENTS**

**1**

Getting Started

**2**

Traineeships, Apprenticeships & Jobs

**3**

Advice for Pupils with Special Educational Needs or Disabilities (SEND) or Additional Support Needs

**4**

Application Form

**5**

Vocational, A Level and GCSE Course Listings

**6**

School and College Sixth Forms in Croydon

**KEY**

Note: Vocational A levels are listed in the A level tables

Archbishop Tenison's	Capel Manor College	Coloma Convent Girls' School	Coombe Wood Sixth Form	Coulsdon Sixth Form College	Croydon College	Harris Professional Skills SF	Harris Sixth Form	John Ruskin College	Norbury Manor BEC	Oasis Academy Shirley Park	The Quest Academy	Riddlesdown Collegiate	Shirley High School	St Joseph's College	The BRIT school	Thomas More Catholic School	Woodcote High School
----------------------	---------------------	------------------------------	------------------------	-----------------------------	-----------------	-------------------------------	-------------------	---------------------	-------------------	----------------------------	-------------------	------------------------	---------------------	---------------------	-----------------	-----------------------------	----------------------

**Hospitality, Catering, Leisure and Tourism**

Air Cabin Crew Diploma Level 2								☆									
Catering Level 2					☆												
Hospitality & Catering Level 1					☆												
Hospitality Level 3				☆													
Leisure and/or Tourism Level 2				☆													
Leisure and/or Tourism Level 3				☆													
Professional Cookery Level 1					☆												
Professional Cookery Level 2					☆												
Professional Cookery Level 3					☆												
Travel & Tourism Level 2				☆				☆									
Travel & Tourism Level 3				☆	☆			☆									
Travel Level 2					☆												

**Horticulture, Arboriculture & Environment**

Introduction to Arboriculture (Tree Surgery) Diploma (Level 1)	☆																
Arboriculture (Tree Surgery) and Forestry Intermediate Diploma (Level 2)	☆																
Agriculture (Farming) Intermediate Diploma (Level 2)	☆																
Agriculture (Farm Management) Advanced Diploma (Level 3)	☆																
Agriculture (Farm Management) Extended Diploma (Level 3)	☆																
Introduction to Gardening and Landscaping Diploma (Level 1)	☆																
Gardening and Commercial Landscaping Diploma (Level 2)	☆																
Foundation Diploma in Floristry (Level 1)	☆																
Land-based Studies (Entry)	☆																
Land-based Studies (Level 1)	☆																

**BACK TO CONTENTS**

1

Getting Started

2

Traineeships, Apprenticeships &amp; Jobs

3

Advice for Pupils with Special Educational Needs or Disabilities (SEND) or Additional Support Needs

4

Application Form

5

Vocational, A Level and GCSE Course Listings

6

School and College Sixth Forms in Croydon

## KEY

Note: Vocational A levels are listed in the A level tables

**Performing Arts, Media & Film**

	Archbishop Tenison's	Capel Manor College	Coloma Convent Girls' School	Coombe Wood Sixth Form	Coulson Sixth Form College	Croydon College	Harris Professional Skills SF	Harris Sixth Form	John Ruskin College	Norbury Manor BEC	Oasis Academy Shirley Park	The Quest Academy	Riddlesdown Collegiate	Shirley High School	St Joseph's College	The BRIT school	Thomas More Catholic School	Woodcote High School	
Creative Media Production Level 2					☆														
Creative Media Production Level 3					☆		☆				☆		☆		☆				
Dance Level 3											☆		☆				☆		
Media Level 2					☆		☆												
Media Level 3					☆		☆												☆
Music											☆		☆				☆		☆
Music Performance Level 3					☆					☆									
Music Technology Level 3					☆	☆									☆	☆	☆		
Musical Theatre Level 3						☆													
Performing Arts Level 2					☆														
Performing Arts Level 3					☆		☆							☆	☆	☆	☆		
Performing Arts Level 3 (Acting)										☆									
Performing and Production Music Level 2						☆													
UAL Level 3 Extended Diploma in Performing & Production Arts																			☆
UAL Level 3 Extended Diploma in Creative Media Production & Technology																			☆
UAL Level 3 Extended Diploma in Music, Performance & Production																			☆
<b>Personal Development</b>																			
BTEC Introductory Certificate in Vocational Studies										☆									
Employability / Work Skills										☆									
ESOL (Various)						☆		☆											
Extended Project Level 3					☆														☆
Foundation for Learning					☆	☆		☆											
Functional Skills						☆		☆						☆	☆				
Life Skills						☆		☆											

**BACK TO CONTENTS**

**1**

Getting Started

**2**

Traineeships, Apprenticeships & Jobs

**3**

Advice for Pupils with Special Educational Needs or Disabilities (SEND) or Additional Support Needs

**4**

Application Form

**5**

Vocational, A Level and GCSE Course Listings

**6**

School and College Sixth Forms in Croydon

**KEY**

Note: Vocational A levels are listed in the A level tables

	Archbishop Tenison's	Capel Manor College	Coloma Convent Girls' School	Coombe Wood Sixth Form	Coulsdon Sixth Form College	Croydon College	Harris Professional Skills SF	Harris Sixth Form	John Ruskin College	Norbury Manor BEC	Oasis Academy Shirley Park	The Quest Academy	Riddlesdown Collegiate	Shirley High School	St Joseph's College	The BRIT school	Thomas More Catholic School	Woodcote High School	
Promoting Independent Skills for Independence And Work									☆										
Work Preparation Courses						☆		☆											
<b>Sport, Coaching &amp; P.E</b>																			
Instructing Exercise & Fitness Level 2									☆										
Sports/Exercise Level 1						☆													
Sports/Exercise Level 2					☆	☆	☆		☆										
Sports/Exercise Level 3					☆	☆		☆	☆	☆	☆	☆							
Sports Level 3													☆						
Sport Performance & Excellence Level 3				☆	☆										☆	☆			☆

### Vocational Course Listings

The courses listed in this section either train you for a specific job, e.g. hairdressing, or give you work-related qualifications in a specific vocational area, e.g. Health & Social Care. Assessments are both written (assignments) and practical.

Vocational courses are best suited to people who are practical learners and are a great way to gain experience in the field you are interested in. Although vocational qualifications qualify you and prepare you for a job or career, they can also lead on to higher level study.

**If you need advice and support about which course to pick, speak to a careers adviser a teacher or tutor or a member of the Admissions Team at the school sixth forms or colleges to which you intend to apply.**

**BACK TO CONTENTS**

1

Getting Started

2

Traineeships, Apprenticeships &amp; Jobs

3

Advice for Pupils with Special Educational Needs or Disabilities (SEND) or Additional Support Needs

4

Application Form

5

Vocational, A Level and GCSE Course Listings

6

School and College Sixth Forms in Croydon

	Archbishop Tenison's	Capel Manor College	Coloma Convent Girls' School	Coombe Wood Sixth Form	Coulsdon Sixth Form College	Croydon College	Harris Professional Skills SF	Harris Sixth Form	John Ruskin College	Norbury Manor BEC	Oasis Academy Shirley Park	The Quest Academy	Riddlesdown Collegiate	Shirley High School	St Joseph's College	The BRIT school	Thomas More Catholic School	Woodcote High School
Accounting													☆					
Applied Science															☆			☆
Art & Design - (Applied - Vocational)															☆			
Art & Design: 3D Design							☆		☆									
Art & Design: Fine Art	☆	☆	☆	☆			☆		☆	☆				☆	☆		☆	☆
Art & Design: Graphic Design				☆					☆					☆				
Art & Design: Photography				☆			☆		☆	☆			☆	☆	☆			☆
Art & Design: Textiles				☆			☆		☆									
Art/Art & Design	☆			☆								☆	☆					
Biology	☆	☆	☆	☆			☆		☆	☆	☆	☆	☆	☆	☆		☆	☆
Business		☆																
Business - (Applied)															☆		☆	
Business Studies	☆			☆			☆		☆	☆			☆	☆	☆			☆
Chemistry	☆	☆	☆	☆			☆		☆	☆	☆	☆	☆	☆	☆		☆	☆
Citizenship																		
Classical Civilisation	☆																	
Classics												☆	☆					
Community Languages										☆				☆	☆			
Computer Science	☆	☆							☆	☆								☆
Computing				☆			☆							☆	☆			☆
Criminology							☆											
Dance										☆		☆						
Design & Technology	☆											☆		☆	☆			
Drama & Theatre	☆	☆					☆					☆	☆	☆	☆		☆	☆
Duke of Edinburgh	☆										☆	☆	☆				☆	☆
Economics	☆	☆	☆				☆		☆		☆	☆			☆		☆	☆
English Language	☆													☆				
English Literature	☆	☆	☆	☆			☆		☆	☆	☆	☆	☆	☆	☆	☆	☆	☆
English Language & Literature				☆														

**BACK TO CONTENTS**

1

Getting Started

2

Traineeships, Apprenticeships &amp; Jobs

3

Advice for Pupils with Special Educational Needs or Disabilities (SEND) or Additional Support Needs

4

Application Form

5

Vocational, A Level and GCSE Course Listings

6

School and College Sixth Forms in Croydon

	Archbishop Tenison's	Capel Manor College	Coloma Convent Girls' School	Coombe Wood Sixth Form	Coulsdon Sixth Form College	Croydon College	Harris Professional Skills SF	Harris Sixth Form	John Ruskin College	Norbury Manor BEC	Oasis Academy Shirley Park	The Quest Academy	Riddlesdown Collegiate	Shirley High School	St Joseph's College	The BRIT school	Thomas More Catholic School	Woodcote High School
Extended Project Qualification	☆		☆	☆	☆					☆	☆	☆	☆	☆	☆		☆	☆
Film Studies	☆				☆			☆								☆		
Food Technology												☆						
Food, Nutrition and Health								☆										
French	☆		☆					☆			☆	☆	☆				☆	☆
Geography	☆		☆	☆	☆			☆		☆	☆	☆	☆	☆	☆		☆	☆
German	☆		☆									☆						
Government & Politics										☆								
Health & Social Care (Vocational)														☆	☆		☆	
History	☆		☆	☆	☆			☆		☆	☆	☆	☆	☆	☆	☆	☆	☆
ICT															☆			
ICT - (Applied - Vocational)															☆		☆	
Latin													☆					
Law			☆		☆													☆
Mandarin															☆			
Maths	☆		☆	☆	☆			☆		☆	☆	☆	☆	☆	☆	☆	☆	☆
Maths: Core					☆												☆	
Maths: Further	☆		☆	☆	☆			☆		☆	☆		☆	☆	☆		☆	☆
Media Studies			☆		☆			☆		☆	☆		☆	☆				☆
Music	☆		☆					☆					☆		☆		☆	☆
Music Technology															☆			
Performance Studies								☆									☆	
Performing Arts (Applied)															☆			
Philosophy & Ethics												☆			☆		☆	☆
Photography	☆				☆								☆	☆	☆			☆
Physical Education	☆		☆	☆				☆				☆	☆	☆			☆	☆
Physics	☆		☆	☆	☆			☆			☆	☆	☆	☆	☆		☆	☆
Politics	☆		☆		☆			☆			☆	☆	☆		☆		☆	☆

## BACK TO CONTENTS

### 1

Getting Started

### 2

Traineeships, Apprenticeships & Jobs

### 3

Advice for Pupils with Special Educational Needs or Disabilities (SEND) or Additional Support Needs

### 4

Application Form

### 5

Vocational, A Level and GCSE Course Listings

### 6

School and College Sixth Forms in Croydon

	Archbishop Tenison's	Capel Manor College	Coloma Convent Girls School	Coombe Wood Sixth Form	Coulsdon Sixth Form College	Croydon College	Harris Professional Skills SF	Harris Sixth Form	John Ruskin College	Norbury Manor BEC	Oasis Academy Shirley Park	The Quest Academy	Riddlesdown Collegiate	Shirley High School	St Joseph's College	The BRIT school	Thomas More Catholic School	Woodcote High School
Product Design	☆												☆					
Product Design: Resistant Materials	☆																	
Psychology	☆		☆	☆	☆			☆		☆	☆	☆	☆	☆	☆		☆	☆
Religious Studies	☆		☆					☆		☆				☆	☆		☆	☆
Sociology	☆		☆		☆			☆		☆	☆	☆	☆	☆			☆	☆
Spanish			☆		☆			☆		☆	☆	☆	☆		☆			☆
Sports Science																	☆	
Turkish											☆	☆		☆				

### A-level Course Listings

A-levels are the most common form of academic learning after GCSEs. There are a wide range of A-level subjects available, some of which you might not have studied at GCSE. Here are some things to think about:

- ④ Which subjects are you strong at? (The jump between GCSEs and A-levels is quite a big one!)
- ④ Which subjects do you enjoy?
- ④ Are you thinking about studying further, e.g. at university or a Degree Apprenticeship – are there specific subjects that you need to do at A-level?
- ④ If you are picking a subject to study at A-level, which you haven't studied before, are there particular GCSEs that you need to have taken?

**If you need advice and support about which subjects to pick, speak to a careers adviser a teacher or tutor or a member of the Admissions Team at the school sixth forms or colleges to which you intend to apply.**

## BACK TO CONTENTS

1

Getting Started

2

Traineeships, Apprenticeships &amp; Jobs

3

Advice for Pupils with Special Educational Needs or Disabilities (SEND) or Additional Support Needs

4

Application Form

5

Vocational, A Level and GCSE Course Listings

6

School and College Sixth Forms in Croydon

There are a limited number of sixth forms and colleges that offer GCSE retakes and those that do, ordinarily offer this alongside other qualifications, not as a stand-alone offer.

You may find that some colleges or providers offer Functional Skills in Maths and / or English rather than GCSEs. Although badged differently, the course content, enables you to develop your Maths and / or English knowledge, understanding and skills up to GCSE level (grade 4).

**If you need advice and support about GCSE retakes, contact the Admissions Team at your chosen school sixth forms or colleges to find out more.**



	Archbishop Tenison's	Capel Manor College	Coloma Convent Girls' School	Coombe Wood Sixth Form	Coulston Sixth Form College	Croydon College	Harris Professional Skills SF	Harris Sixth Form	John Ruskin College	Norbury Manor BEC	Oasis Academy Shirley Park	The Quest Academy	Riddlesdown Collegiate	Shirley High School	St Joseph's College	The BRIT school	Thomas More Catholic School	Woodcate High School	
Biology					☆														
Science (Double)							☆												
English/English Language	☆	☆	☆	☆			☆	☆	☆	☆	☆	☆		☆	☆	☆	☆	☆	☆
French							☆												
Functional Skills		☆							☆										
History							☆												
Mathematics	☆	☆	☆	☆			☆	☆	☆	☆	☆	☆		☆	☆	☆	☆	☆	☆





## BACK TO CONTENTS

### 1

Getting Started

### 2

Traineeships, Apprenticeships & Jobs

### 3

Advice for Pupils with Special Educational Needs or Disabilities (SEND) or Additional Support Needs

### 4

Application Form

### 5

Vocational, A Level and GCSE Course Listings

### 6

School and College Sixth Forms in Croydon

The colleges, sixth forms and organisations listed below are all located in Croydon. Some are independent, fee-charging schools (i.e. they are not financed by the government, but instead largely by school fees paid by parents). If you are interested in attending any of them, then please contact them directly for information about their courses and how to apply.

Most independent, fee-charging schools (marked with an asterisk \*) offer some form of financial support.

To find out if you qualify for a:

- ② bursary (a non-repayable sum of money awarded to students to support their studies) or
- ② scholarship (academic / sport / art / music or other)
- ② contact the schools / colleges directly or visit their website for further information.

Institution	Web Address/Email	Telephone Number
Cambridge Tutors College*	<a href="http://www.ctc.ac.uk">www.ctc.ac.uk</a> <a href="mailto:info@ctc.ac.uk">info@ctc.ac.uk</a>	020 8688 5284
Croydon High School Sixth Form*	<a href="http://www.croydonhigh.gdst.net">www.croydonhigh.gdst.net</a> <a href="mailto:info2@cry.gdst.net">info2@cry.gdst.net</a>	020 8260 7500
Croydon Metropolitan College*	<a href="http://www.croydonmet.org.uk">www.croydonmet.org.uk</a> <a href="mailto:admin@croydonmet.org.uk">admin@croydonmet.org.uk</a>	020 8688 5777
Motivational Preparation College for Training	<a href="http://www.mpct.co.uk">www.mpct.co.uk</a> <a href="mailto:enquiries@mpct.co.uk">enquiries@mpct.co.uk</a>	0330 111 3939
Old Palace School of John Whitgift*	<a href="http://www.oldpalace.croydon.sch.uk">www.oldpalace.croydon.sch.uk</a> <a href="mailto:schooloffice@oldpalace.croydon.sch.uk">schooloffice@oldpalace.croydon.sch.uk</a>	020 8688 2027
Royal Russell School*	<a href="http://www.royalrussell.co.uk">www.royalrussell.co.uk</a> <a href="mailto:admissions@royalrussell.co.uk">admissions@royalrussell.co.uk</a>	020 8657 4433
Trinity School Sixth Form*	<a href="http://www.trinity-school.org">www.trinity-school.org</a> <a href="mailto:sixthformadmissions@trinity.croydon.sch.uk">sixthformadmissions@trinity.croydon.sch.uk</a>	020 8656 9541
Whitgift School Sixth Form*	<a href="http://www.whitgift.co.uk">www.whitgift.co.uk</a> <a href="mailto:office@whitgift.co.uk">office@whitgift.co.uk</a>	020 8688 9222

There are also a wide range of specialist colleges, schools and training organisations including University Technical Colleges (UTCs)\*, which provide a wide range of sector focused courses and qualifications.

\*UTCs are government funded schools, which have a STEM (Science, Technology, Engineering, Maths) focus.

🌐 <https://youngcroydon.org.uk/16-19-opportunities/>

🌐 [www.londoncolleges.com](http://www.londoncolleges.com)

🌐 [www.utcolleges.org/utcs/?region=london&specialism=all](http://www.utcolleges.org/utcs/?region=london&specialism=all)

Please visit the Croydon Local Offer website to view further information on specialist provision or courses for students with special educational needs or disabilities available in Croydon or outside of the borough.

🌐 <https://localoffer.croydon.gov.uk>

**BACK TO CONTENTS**

**1**

Getting Started

**2**

Traineeships, Apprenticeships & Jobs

**3**

Advice for Pupils with Special Educational Needs or Disabilities (SEND) or Additional Support Needs

**4**

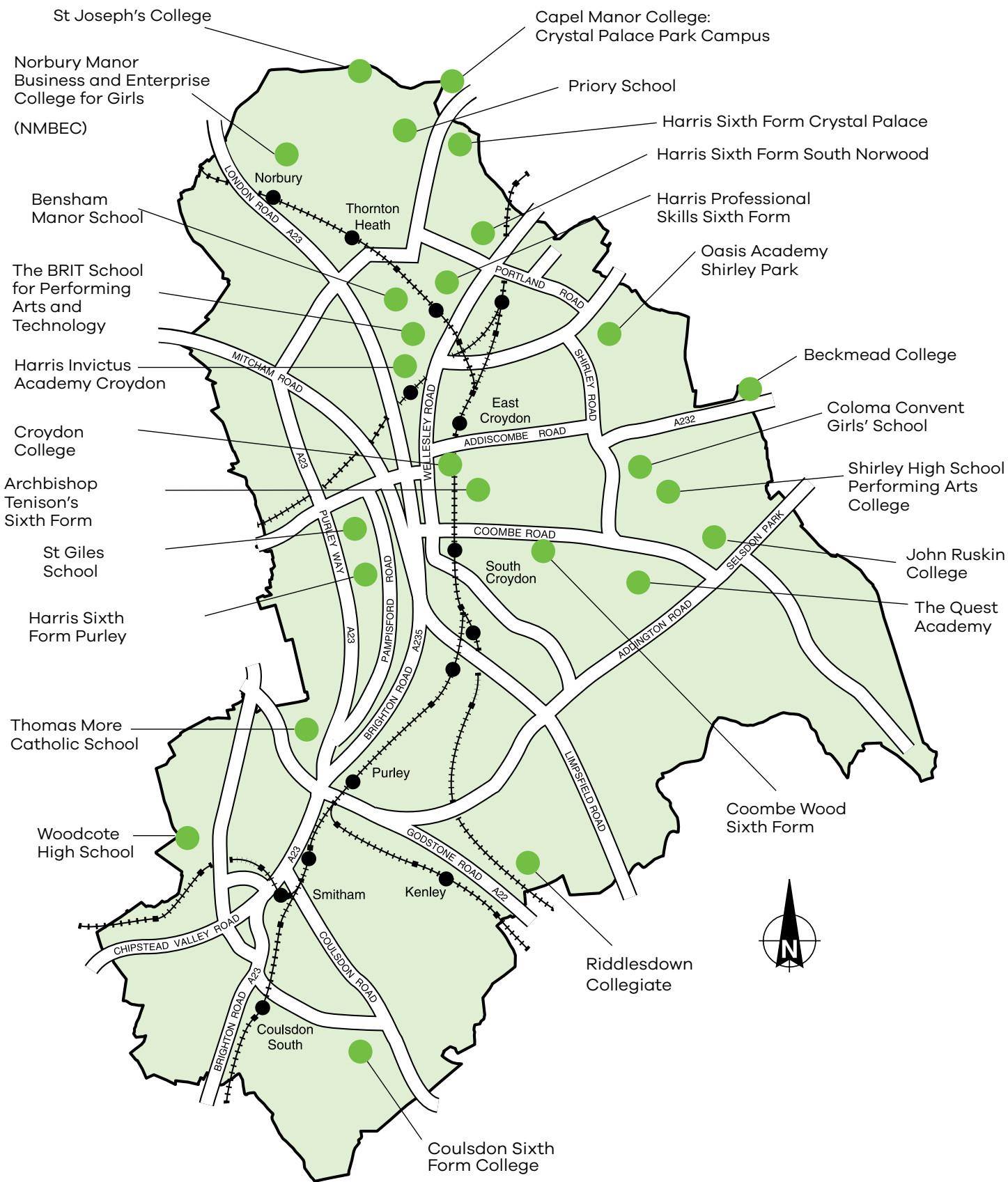
Application Form

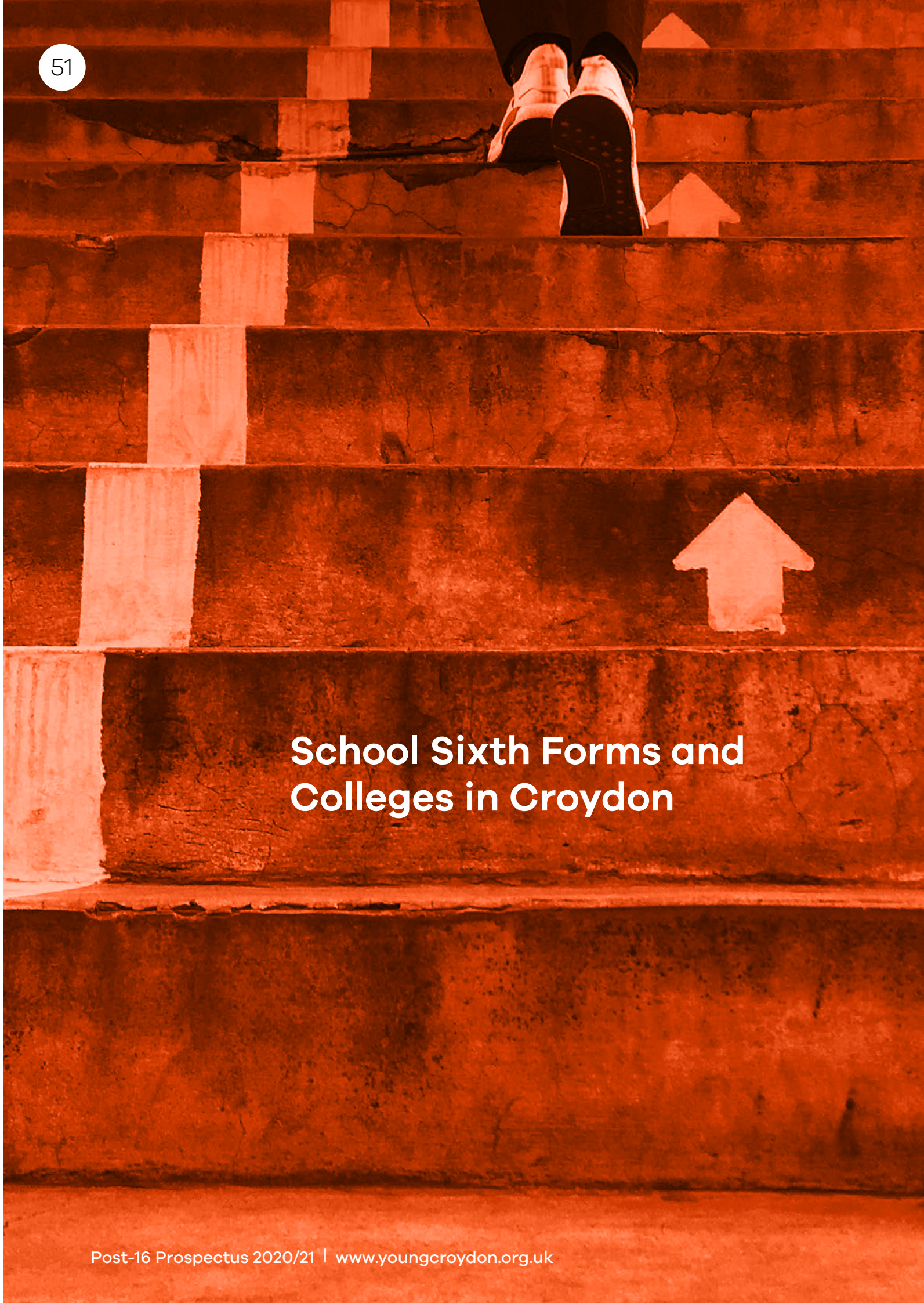
**5**

Vocational, A Level and GCSE Course Listings

**6**

School and College Sixth Forms in Croydon





**BACK TO CONTENTS**

**1**

Getting Started

**2**

Traineeships, Apprenticeships & Jobs

**3**

Advice for Pupils with Special Educational Needs or Disabilities (SEND) or Additional Support Needs

**4**

Application Form

**5**

Vocational, A Level and GCSE Course Listings

**6**

School and College Sixth Forms in Croydon

# School Sixth Forms and Colleges in Croydon

# Archbishop Tenison's Church of England Sixth Form

**Contact:** Miss Kathryn Eyre | Assistant Headteacher

**Tel:** 020 8688 4014

**Fax:** 020 8681 6336

**E-mail:** [sixthformadmissions@archten.croydon.sch.uk](mailto:sixthformadmissions@archten.croydon.sch.uk)

**Website:** [www.archten.croydon.sch.uk](http://www.archten.croydon.sch.uk)



## BACK TO CONTENTS

### 1

Getting  
Started

### 2

Traineeships,  
Apprenticeships  
& Jobs

### 3

Advice for Pupils with  
Special Educational  
Needs or Disabilities  
(SEND) or Additional  
Support Needs

### 4

Application  
Form

### 5

Vocational, A Level  
and GCSE Course  
Listings

### 6

School and College  
Sixth Forms  
in Croydon

With around 140 students, the Sixth Form at Archbishop Tenison's is large enough to offer a wide range of A-levels and extra-curricular activities, whilst still being small enough for us to know all our students well and offer them the care and support they need over their two years of study. We have students from many different schools and welcome applicants from all backgrounds. Archbishop Tenison's is an Anglican foundation, so students are expected to be sympathetic to the values which underlie our Christian ethos.

### Why study at Tenison's?

We have a strong academic tradition, with a history of producing good results, and many of our student's progress to the top universities. We offer a wide range of subjects and one of the hallmarks of our school is the way in which students work together. There is a strong sense of community within our Sixth Form and students are encouraged to participate in a range of activities beyond the formal curriculum, including music, drama, sport, business-related workshops and public speaking.

There are many opportunities to develop leadership qualities through the mentoring programme and Sixth Form Council, as Student Leaders, or as representatives on committees in school or within the wider Croydon community. The Sixth Form Council runs a whole variety of events including the Annual Charity Appeal, the Revue (Soirée) and a variety of Sixth Form social events. Students follow a two-year course, beginning with three A Level subjects, although some are able to take four full A Levels, and there is the opportunity to study one AS subject in Year 12 for added breadth.



"Tenison's has a very strong community. There's always something to join in with. It is a very friendly place with a great atmosphere to study in." **Emma**

"I like the friendly atmosphere at Tenison's, also the friendly teachers." **Tiffany**

"There's a real community sense here and everyone talks to everyone. It's a great place to be." **Daniel**

### Important Information

Open Event:	Wednesday 21 October 2020 6:00pm - 8:00pm
Address:	Selborne Road, Croydon, CR0 5JQ
Public Transport:	Train: East Croydon Buses: 64, 433 Tram: East Croydon, Lebanon Road, Sandilands
Applications:	Come to our open evening and pick up a prospectus, course guide and application form.  Applications for entry in September 2021 must be received by the end of December 2020.

# Capel Manor College

**Contact: Andrew Smith | Crystal Palace Park Campus | Tel: 020 8778 5572**

**Contact: Leanne Beeston | Mottingham Campus | Tel: 020 8676 0870**

**Contact: Pauline Hill | Designated Contact for Learners with Additional Support Needs | Tel: 0303 003 1234 ext 1173**

**Email: [study@capel.ac.uk](mailto:study@capel.ac.uk)**

**Website: [www.capel.ac.uk](http://www.capel.ac.uk)**

## BACK TO CONTENTS

### 1

Getting Started

### 2

Traineeships, Apprenticeships & Jobs

### 3

Advice for Pupils with Special Educational Needs or Disabilities (SEND) or Additional Support Needs

### 4

Application Form

### 5

Vocational, A Level and GCSE Course Listings

### 6

School and College Sixth Forms in Croydon

We are London's only specialist environmental college, offering a diverse range of full and part-time courses in further and higher education for young people and adults.

## Why study at Capel Manor College?

As part of your studies, you have the unique opportunity to obtain real-world experience and help take care of our gardens and farms.

We have courses in:

- Agriculture
- Animal management
- Arboriculture and forestry
- Floristry and event styling
- Garden and landscape design
- Horticulture and professional landscaping
- Leatherwork
- Wildlife and environmental conservation

If you are looking to start work, earn money and gain a nationally recognised qualification within land-based industries, we also offer the following apprenticeships:

- Arboriculture
- Horticulture
- Sports turf maintenance
- Floristry
- Zookeeping

## Special Educational Needs and Disability (SEND)

Students at Capel Manor College have a range of abilities and the College offers personalised support on all courses. Each student has an interview with a support team member, where any adjustments or additional requirements can be discussed and planned.

Additionally, our students have access to Learning Support Assistants (in-class support), Key Workers, careers advice, visual and hearing impairment support, extra tuition, pastoral support, one-page profiles and specialist dyslexia, speech and language therapy.

## What our students say:

*"By studying at the College, I gained a place at university to study veterinary medicine. I would not have got as far as I did without the support of the College and faculty staff."*

**Hazel studied animal management (Level 3) before progressing to higher education.**



## Important information

Open Events:	We host Open Days at all of our campuses once a term, as well as monthly Advice Evenings. Further information is available on our website. Visit <a href="http://www.capel.ac.uk/open-days">www.capel.ac.uk/open-days</a> to register for upcoming events.
Address:	Crystal Palace Park Campus, Ledrington Road, SE19 2BS  Mottingham Campus Mottingham Lane, Mottingham, London, SE12 9AW
Public Transport:	Crystal Park Palace Campus: Served by Crystal Palace Station (from Victoria, London Bridge and Dalston Junction)  Mottingham Campus: Mottingham Station is a 23-minute walk from the Campus, with regular services to London Charing Cross, London Bridge, Cannon Street and Dartford
Applications:	You can apply online at <a href="http://www.capel.ac.uk">www.capel.ac.uk</a> . If you have any questions you can call our friendly Admissions team on 0303 003 1234.

# Coombe Wood School Sixth Form

**Contact:** Joe Brack | Head of Sixth Form

**Tel:** 020 8289 4745

**E-mail:** SixthForm@cws.foliotrust.uk

**Website:** [www.cws-croydon.co.uk/sixth-form](http://www.cws-croydon.co.uk/sixth-form)



**BACK TO CONTENTS**

**1**

Getting Started

Coombe Wood is the fastest growing secondary school in Croydon (520 applications for Year 7 places in 2018, 1205 in 2019 and 1369 in 2020), which we feel is due to the special blend of academic rigour and whole student development that our staff provide. The first sixth form cohort will start in September 2021, and with this a great opportunity for new students to join Coombe Wood School at Key Stage 5. In conjunction with Wallington County Grammar School and Folio Education Trust, Coombe Wood Sixth Form will provide an excellent opportunity for young people to excel in their Post 16 Education. At Coombe Wood School we believe in preparing students for the challenges of the outside world through the school's core values of Teamwork, Respect, Enjoyment, Discipline and Sportsmanship.

**2**

Traineeships, Apprenticeships & Jobs

## Why study at Coombe Wood?

Year 12s at Coombe Wood Sixth Form will join a friendly, inclusive and highly successful school that is only 8 minutes from East Croydon via the Tram. Students will have a fantastic new building, their own sixth form centre and state of the art facilities to aid their learning. In order to maximise their potential, students will have access to an A Level academic pathway, which includes the Extended Project Qualification (EPQ), and for prospective sports students we will offer the BTEC Sport Level 3 Extended Diploma alongside specific sport-based enrichment.

## The Courses we will run are:

Biology, Chemistry, Physics, Economics, English Literature, Maths, Further Maths, History, Geography, PE, Psychology, Fine Art, EPQ, BTEC SPORT L3 Extended Diploma.

## What our students say:

*'My favourite thing about Coombe Wood School is the sense of belonging. Here, everyone is part of something; may it be a house, a club or a group of friends. Everyone is part of the Coombe Wood family.'*

*'The thing I love about Coombe Wood School is that as well as learning, there is a focus on fitness and sport. I feel that being fit and healthy helps me with my learning.'*

**3**

Advice for Pupils with Special Educational Needs or Disabilities (SEND) or Additional Support Needs

At Coombe Wood our standards and expectations are extremely high. We recognise that as the rigour and demands of A Levels and other Level 3 qualifications increase, the competitiveness of students getting into Russell Group Universities, high end apprenticeships and employment will match this. Furthermore, our sixth form students will be expected to be role models and take the lead in our school Student Leadership Team with the same high standards.

Students will have comprehensive pastoral support, careers guidance, outstanding teaching and an extensive enrichment programme to support their transition and development while at Coombe Wood Sixth Form.

To sign up for our sixth form mailing list and for the latest information regarding Coombe Wood School, including visiting our fantastic new facilities, please see our school website [www.cws-croydon.co.uk](http://www.cws-croydon.co.uk).

## Important Information

Open Event:	19th November at 5-8pm Venue to be confirmed (please see website)
Address:	30 Melville Avenue, Croydon, CR2 7HY
Public Transport:	Lloyd Park Tram Stop (5-minute walk)
Applications:	Early application is advised <a href="http://www.cws-croydon.co.uk/sixth-form">www.cws-croydon.co.uk/sixth-form</a>

**4**

Application Form

**5**

Vocational, A Level and GCSE Course Listings

**6**

School and College Sixth Forms in Croydon

# Coloma Convent Girls' School

**Contact:** Mrs J Ingram | Sixth Form Co-ordinator

**Tel:** 020 8654 6228

**E-mail:** [jingram@coloma.croydon.sch.uk](mailto:jingram@coloma.croydon.sch.uk)

**Website:** [www.coloma.croydon.sch.uk](http://www.coloma.croydon.sch.uk)



Coloma, founded in 1869, is a Voluntary Aided Roman Catholic School with World Class School status. Our Sixth Form is a rich and diverse community. Applications are welcome from girls of all faiths and traditions. It is friendly, inclusive, supportive and proud of its reputation as a centre of academic excellence; we have been placed in the top 10% nationally by ALPS for student progress for three consecutive years.

Within our curriculum pathways we offer a wide range of A-levels and a smaller number of Level 3 BTECs that enable our students to achieve at the highest levels. Central to our ethos is the focus on academic and personal development, fostering strong relationships and on being of service both within the school and in the wider community.

## Why study at Coloma?

*"Students make outstanding progress and attain high standards in their work". Ofsted*

We offer outstanding Teaching and Learning. Our results place us high in the league tables for both attainment and for adding value. In the classroom, you will be challenged and supported: we know that giving support and boosting confidence will be particularly important following the Covid-19 closures. Our World Class School approach means we offer you six lessons of teaching per week (5 hours) for each of your subjects alongside the added advantage of a supervised independent study programme which enables you to make maximum progress between your lessons; this is a significant advantage over other providers. In lessons, you will be encouraged to question, analyse and evaluate to become a more independent learner.

*"Teachers are really passionate about their subject and your success." – Sixth Form Student.*

*"Everyone in lessons is determined to succeed" – Year 12 student.*

We provide a wealth of extra-curricular opportunities through music, sports, drama, art, debating, academic societies and charity work, all of which develop teamwork and leadership skills. Subject conferences, an expert lecture programme and visits abroad enrich learning – as well as visits to the theatre, museums and competitions. Our weekly PSHE programme has a particular focus on careers guidance and progression at 18+. We offer the opportunity to undertake work experience and internships during Year 12. Well over 90% choose to progress to university, and typically over 40% go to Russell Group Universities.

Last year, 100% of students attained places at their chosen workplaces and top Universities including Cambridge, Durham, Exeter, UCL, LSE, Kings, Edinburgh and even Yale in the USA!

The excellent relationships between staff and students make Coloma distinctive. In 2020 our average class size is 12 - this makes a huge difference as we will know you personally. Your specialist team of academic, pastoral and careers experts will enable you to achieve your goals.

**As one Year 12 student said,** *"Moving to Coloma was the best decision, academically and socially, I ever made. Teachers here really care about you and your success"*

## Important Information

Open Event:	Tuesday 6th October 2020: 5.00pm-7.30pm
Address:	92 Upper Shirley Road, Shirley, Croydon, CR9 5AS
Public Transport:	Buses: 119, 130, 166, 194, 466
Applications:	Our prospectus is available on our website which outlines our curriculum pathways and academic admissions criteria. Applications are made online at <a href="http://www.coloma.croydon.sch.uk">www.coloma.croydon.sch.uk</a> under the Sixth Form tab. Closing date for applications: <b>Monday 30th November 2020</b>

BACK TO CONTENTS

1

Getting Started

2

Traineeships, Apprenticeships & Jobs

3

Advice for Pupils with Special Educational Needs or Disabilities (SEND) or Additional Support Needs

4

Application Form

5

Vocational, A Level and GCSE Course Listings

6

School and College Sixth Forms in Croydon

**Contact:** Caireen Mitchell | CEO  
**Tel:** 01737 551176 | **Fax:** 01737 551282  
**E-mail:** [admissions@coulston.ac.uk](mailto:admissions@coulston.ac.uk)  
**Website:** [www.coulston.ac.uk](http://www.coulston.ac.uk)



**BACK TO CONTENTS**

**1**

Getting Started

Coulston Sixth Form College was again graded 'good' by Ofsted in April 2018 and consistently achieves pass rates at or over 99%. The College offers a broad range of academic A Level and vocational BTEC courses. Uniquely, students can choose to study A Levels, BTECs or a mix of both by combining the academic rigour of A Levels with the practical application of skills in a BTEC. Strong teaching is complimented by an array of support services such as careers and a comprehensive enrichment programme. All our staff are specialists in working with 16-19 year-olds and are committed to helping each and every student to achieve.

The university-style campus consists of a modern three storey building that provides students with excellent general and specialist learning facilities. The additional Sports and Performance Centre is home to a purpose-built theatre, dance studio, sports hall and gym, and outside there's an all-weather pitch, plus both netball and tennis courts, alongside the extensive playing fields. Together with first-class science labs, and state-of-the-art media and visual arts studios, the College has some of the best facilities in the area.

**2**

Traineeships, Apprenticeships & Jobs

### Why study at Coulston?

**Great results and destinations:** With a 99% or better pass rate in the last five years, our students make excellent progress enabling them to go to university, into employment, or an Apprenticeship.

#### Brilliant choice and combination of subjects:

As a specialist Sixth Form College, not only do we offer a wider choice of A Level subjects and vocational programmes than school sixth forms, students can 'mix and match' these to suit their specific interests, abilities and aspirations.

**Specialist support for students:** As well as excellent academic support from teachers, every student has a dedicated personal tutor and access to learning support, careers advice and financial advice.

**Excellent extra-curricular activities:** As part of our Coulston Plus Programme, students take part in a range of activities such as: sports; volunteering; fundraising; running the Students' Union and completing an EPQ (Extended Project Qualification).

**New provision:** Coulston Sixth Form College and Croydon College merged in early 2019. Although students who enrol to Coulston Sixth Form College will have their courses delivered at the Coulston Campus, it means that for young people who live in the area, they have access to a comprehensive range of options and pathways to Apprenticeships and Higher Education.

### What our students say:

*"I really like that I can mix BTEC and A Level and with a 'door is always open policy' the teachers are always on hand."* **Jasmine**

### Important Information

Open Day	Saturday 10th October 2020, 10am to 1pm
Open Evening	Thursday 19th November 2020, 5.30pm to 8pm
Pathway Events:	Wednesday 3rd March 2021, 5.30pm to 7.30pm Wednesday 10th March 2021, 5.30pm to 7.30pm Wednesday 17th March 2021, 5.30pm to 7.30pm Please visit <a href="http://www.coulston.ac.uk">www.coulston.ac.uk</a>
Address:	Coulston Sixth Form College Placehouse Lane, Old Coulston, CR5 1YA
Public Transport:	Buses: 60, 466, 409 Train: Coulston South, Coulston Town
Applications:	Early application is advisable.

**3**

Advice for Pupils with Special Educational Needs or Disabilities (SEND) or Additional Support Needs

**4**

Application Form

**5**

Vocational, A Level and GCSE Course Listings

**6**

School and College Sixth Forms in Croydon



**Caireen Mitchell | Principal & CEO**

**Tel: 020 8686 5700**

**E-mail: [admissions@croydon.ac.uk](mailto:admissions@croydon.ac.uk)**

**Website: [www.croydon.ac.uk](http://www.croydon.ac.uk)**



**BACK TO  
CONTENTS**

**1**

Getting  
Started

We're a supportive, success-driven College situated in the heart of Croydon. With a wide range of excellent professional and technical programmes including Further Education, Apprenticeships, Vocational courses, ESOL, Access and Distance Learning, we have the courses and facilities to ensure you have the best learning experience. Students have access to industry-standard software and equipment, a large library space and many social learning areas, all to enable you are prepped and ready for your next steps after College. Plus the College was rated 'Good' by Ofsted yet again!

We take pride in offering great progression opportunities onto Apprenticeships and employment, plus we have a university centre on site (UCC), offering a range of undergraduate degree courses. Our teachers are friendly, experienced and committed to helping you achieve your potential. We have qualified advisors available to provide you with all the support you need to succeed. Come and take a look for yourself at one of our next open events.

**2**

Traineeships,  
Apprenticeships  
& Jobs

### Why study at Croydon College?

With over 6,000 students choosing to study at Croydon College every year, on any level from Level 1 upwards, we always encourage our students to think creatively, work independently and to develop the life skills necessary to succeed in whatever they pursue in the future.

We've also got great industry contacts and work closely with employers such as Gatwick Airport and Allianz to offer our students personalised employability support.

### What our students say about us

*"I chose Croydon College because there are many different courses you can study; great lecturers and an excellent social life."* **Joseph, Access to Science**

*"I like the confidence of the teachers; they persevere with students and are very supportive. Tutors really push students to achieve and give face to face feedback."* **Sara, L1 Hair and Beauty**

### Important Information

Open Event:	Wednesday 7th October 2020, 4.30pm - 6.30pm Saturday 7th November 2020, 10am-1pm Thursday 25th March 2021, 4.30pm - 6.30pm Wednesday 30th June 2021, 4.30pm - 6.30pm
Address:	Croydon College College Road, Croydon, CR9 1DX
Public Transport:	Buses stop outside the College and East Croydon station is a 2 minute walk.
Applications:	Early application is advisable.

**3**

Advice for Pupils with  
Special Educational  
Needs or Disabilities  
(SEND) or Additional  
Support Needs

### New provision:

Coulsdon Sixth Form College and Croydon College merged in early 2019. The new provision aims to provide even better educational services to communities within the borough and beyond. The Colleges will help train and educate over 2,500 students aged between 16-19 and 4,000 adults each year including approximately 500 apprentices and 400 Higher Education students.

**4**

Application  
Form

**5**

Vocational, A Level  
and GCSE Course  
Listings

**6**

School and College  
Sixth Forms  
in Croydon

**BACK TO  
CONTENTS**

**1**

Getting  
Started

**2**

Traineeships,  
Apprenticeships  
& Jobs

**3**

Advice for Pupils with  
Special Educational  
Needs or Disabilities  
(SEND) or Additional  
Support Needs

**4**

Application  
Form

**5**

Vocational, A Level  
and GCSE Course  
Listings

**6**

School and College  
Sixth Forms  
in Croydon

**Contact: Apprenticeship Team**

**Tel: 020 8686 5700**

**E-mail: [apprenticeships@croydon.ac.uk](mailto:apprenticeships@croydon.ac.uk)**

**Website: [www.croydon.ac.uk](http://www.croydon.ac.uk)**



**Want to earn a wage, develop work based skills and learn at the same time? An Apprenticeship is a training development programme tied to a job role. It allows you to gain technical and functional knowledge plus the real practical experience required to do a job well. Around 150,000 employers offer Apprenticeships in more than 200,000 locations. Croydon College is one of South London's leading providers of Apprenticeships, so it is a great place to start your journey.**

Our Apprenticeship programmes provide you with a challenging, yet rewarding experience which can boost your career. As an apprentice you will work as a contracted employee with full training, working alongside experienced staff and putting you on the first rung of your career ladder.

Apprenticeships are available at Intermediate, Advanced and Higher (degree) levels, covering more than 170 industries and 1,500 job roles.

Apprentices earn while they learn, gain nationally recognised qualifications and receive professional on-the-job training. So if you want to learn the trade of your choice and earn as you go, an Apprenticeship might just be the right option for you.

**Our current offering includes the following:**

- Assistant Accountant Level 3
- Associate Project Manager (Business and Professional Administration) Level 4
- Business and Administration Level 2
- Business and Administration Level 3
- Commis Chef Level 2
- Customer Service Practitioner Level 2
- Customer Service Specialist Level 3
- Data Analyst Level 4
- Digital Marketer Level 3
- Events Assistant Level 3
- Hospitality Team Member Level 2
- HR Support Level 3
- Infrastructure Technician Level 3
- IT Solutions Technician
- Learning and Skills Teacher Level 5
- Marketing Executive Level 4

- Operations/Departmental Manager Level 5
- Pharmacy Services Assistant Level 2
- Professional Accounting/Taxation Technician Level 4
- Teaching Assistant Level 3
- Travel Consultant Level 3
- Workplace Pensions (Administrator or Consultant) Level 3

The roles change and develop all the time to suit the employment market.

**Important Information**

If you require further information, please do not hesitate to contact the Apprenticeship Team on the above contact. Alternatively, drop into Croydon College Monday to Friday between 9am – 5pm.

Address:	Croydon College College Road, Croydon, CR9 1DX
Public Transport:	Buses stop outside the College and East Croydon station is a 2 minute walk.

BACK TO  
CONTENTS

1

Getting  
Started

2

Traineeships,  
Apprenticeships  
& Jobs

3

Advice for Pupils with  
Special Educational  
Needs or Disabilities  
(SEND) or Additional  
Support Needs

4

Application  
Form

5

Vocational, A Level  
and GCSE Course  
Listings

6

School and College  
Sixth Forms  
in Croydon

**Contact:** Ms R McLean

**E-mail:** R.McLean@harrisps6f.org.uk

**Tel:** 0203 370 9238

**E-mail:** info@harrisps6f.org.uk

**Website:** www.harrisps6f.org.uk



Part of the Harris Federation, Harris Professional Skills Sixth Form caters for students who may not suit the traditional pathways at sixth form. With small class sizes and strong pastoral support, we offer excellent, focused vocational options as well as the opportunity to take or re-sit GCSEs that you need to progress further – whether you choose to progress into a career or higher education.

### Why study at Harris Professional Skills?

Our academy will offer a choice of Construction, Health and Social Care, Science, Business or Media for students choosing a vocational pathway, and a curriculum that will challenge and inspire you to develop the skills and confidence you need to compete successfully for jobs in your chosen vocation.

With a focus on hard skills and employability, Harris Professional Skills Sixth Form will help you develop the skills you need to be who you want to be – and be part of that success.

### Key Features

- A curriculum focused on vocational subjects that is enhanced by a supporting programme of study based around skills for work and life.
- Resit GCSEs to allow students the opportunity to move onto A Level programme of studies.
- Lessons designed to explore and give real world experience of your vocation rather than focusing simply on the delivery of an exam syllabus.
- Courses that value professional attitudes towards work and a deeper understanding of the wider skill sets required to be successful.
- Additional qualifications such as Safety Certification for Equipment and Plant to enhance every students' CVs giving them more opportunity for successful job applications.
- An excellent careers and life skills programme to give students extra support and guidance in key skills in:
  - Literacy education
  - Numeracy - Financial planning
  - Careers advice - Interview technique
  - Self confidence
  - Applying for work/ further/higher

- Cultural Enrichment in collaboration with the well-established Harris Experience programme to encourage curiosity and to provide a wide appreciation of knowledge and understanding beyond their vocational subjects. These include courses in Leadership, Theatre visits, Art Appreciation and Creative writing to highlight a few of the opportunities.
- Student-led subject societies that meet to discuss areas of interest not exhausted in class and which might involve talks by external experts and working with experts in industry.
- Courses We Offer:  
A full suite of GCSE resit courses in:
  - English Language
  - English Literature
  - Mathematics
  - Science
  - Humanities
  - MFL
  - Design and Technology
  - Art
- Vocational Courses  
Students can undertake a vocational pathway up to level 3 ("A" Level Equivalent) in:
  - Bricklaying
  - Plumbing
  - Joinery
  - Media Studies
  - Science
  - Business Studies
  - Health and Social Care
  - PE

### Important Information

Open Event:	Thursday 19 November 2020 5-7.30 pm
Address:	11 Oliver Grove, South Norwood, SE25 6EJ
Public Transport:	Train: Norwood Junction Buses: 75, 157, 196, 358, 410
Applications:	Closing date for applications <b>Friday 26 March 2021</b>

**BACK TO  
CONTENTS**
**1**

 Getting  
Started

**2**

 Traineeships,  
Apprenticeships  
& Jobs

**3**

 Advice for Pupils with  
Special Educational  
Needs or Disabilities  
(SEND) or Additional  
Support Needs

**4**

 Application  
Form

**5**

 Vocational, A Level  
and GCSE Course  
Listings

**6**

 School and College  
Sixth Forms  
in Croydon

**Contact:** Mrs L Burgess

**Tel:** 020 8253 7777

**E-mail:** [info@harrissixthform.org.uk](mailto:info@harrissixthform.org.uk)
**Website:** [www.harrissixthform.org.uk](http://www.harrissixthform.org.uk)


Harris Sixth Form now has four Academies in Croydon: Harris City Academy Crystal Palace, Harris Academy South Norwood, Harris Academy Purley and Harris Invictus Academy Croydon.

As part of a bigger group of highly successful Sixth Form campuses, the academies work together to provide a wide range of courses for students of all abilities. The Harris Sixth Form aims to provide high quality education and training for students of all abilities and backgrounds.

In addition to the academic courses available, Harris Sixth Form also offers the chance to those interested in football, rugby or athletics, the opportunity to take part in their football, rugby and athletics academies:

- Football takes place at the South Norwood and Crystal Palace campuses;
- Rugby for both boys and girls is based at the Crystal Palace campus;
- The athletics is currently based at the Crystal Palace campus.

Any place at the sports academies is dependent on a successful trial and obtaining a place at Harris Sixth Form for academic studies. See the website for further details.

### Harris Experience Advanced

This is a Federation Sixth Form academic enhancement programme. Students have attended interviews and some have gone on to secure offers at either Cambridge or Oxford. 95% of Harris Experience Advanced students have been successful in their applications to Russell Group universities and we have many students who have accepted places at prestigious 'Sutton Trust 13' universities within that group.

### Why study at Harris?

Harris Sixth Form offers students the opportunity to choose from a wide range of traditional A Levels and vocational qualifications. We admit students with a wide range of abilities and aptitudes. Our motto 'All Can Achieve' ensures that each student has a course suited to his/her own needs and aspirations. This is supplemented by first rate careers advice and guidance and excellent opportunities for personal development and confidence building. All students have a high level of contact time with their teachers on the course, and Harris Sixth Form prides itself on the support systems available to them.

Study is important but there will be a wide range of social activities in place.

### What our students say:

*"I have had a great time studying at Harris. The environment allowed me to work hard and achieve results beyond my expectations."* **Rachel**

*"At Harris I have really been encouraged to excel in my studies and all students are provided with a positive atmosphere which allows them to enjoy their sixth form studies"* **Head boy**

### Important Information

Open Event:	Harris City Academy Crystal Palace Tuesday 13 October 2020, 5-7pm
Address:	Maberley Road, London, SE19 2JH
Open Event:	Harris Academy South Norwood Wednesday 18 November 2020, 5.30-7.00pm
Address:	Cumberlow Avenue, London SE25 6AE
Open Event:	Harris Academy Purley Thursday 15 October 2020, 5-8pm
Address:	Kendra Hall Road, Surrey, CR2 6DT
Open Event:	Harris Invictus Academy Croydon Thursday 8 October 2020, 5-7pm
Address:	London Road, Croydon, CR0 2TB
Public Transport:	<b>PU: Buses:</b> 405, 455 <b>CP: Buses:</b> 410, 157, 249 <b>SN: Buses:</b> 75, 157, 196, 410, 130, 312 <b>HIAC: Buses:</b> 60, 64, 109, 198, 250, 289
Applications:	Come to one of our open evenings and pick up a prospectus. Closing date for applications is <b>Wednesday 31st March 2021</b> . Forms received after the closing date will be placed on a waiting list.

**BACK TO  
CONTENTS**

1

Getting  
Started

2

Traineeships,  
Apprenticeships  
& Jobs

3

Advice for Pupils with  
Special Educational  
Needs or Disabilities  
(SEND) or Additional  
Support Needs

4

Application  
Form

5

Vocational, A Level  
and GCSE Course  
Listings

6

School and College  
Sixth Forms  
in Croydon

**Contact:** Juana Ortuno-Mora

**Client Services Manager**

**Tel:** 020 8651 1131

**E-mail:** [clientservices@johnruskin.ac.uk](mailto:clientservices@johnruskin.ac.uk)

**Website:** [www.johnruskin.ac.uk](http://www.johnruskin.ac.uk)



John Ruskin College, South Croydon is a highly supportive and successful College. We are very experienced in successfully delivering vocational qualifications and have extended our curriculum offer for 2020, providing an exciting variety of full-time courses at a range of levels. Students will also have the opportunity to engage in valuable work experience related to their qualification.

**Courses include:** Accounting, Art and Design, Beauty/Spa, Business, Construction, Digital Media, Engineering, Games Design, Graphic Design, Hairdressing, Health & Social Care, Early Years, IT, Photography, Plumbing, Public Services, Science, Sport and Travel/Aviation.

We are an inclusive mainstream college and work closely with families to meet the needs of students with special educational needs (SEN) or disabilities, and also offer well established ESOL and Foundation Learning programmes and a wide range of Apprenticeships.

### Why study at John Ruskin College?

Our first-class teaching staff have excellent subject knowledge and substantial industry experience. In Summer 2019 we achieved 100% pass rate on our Level 3 vocational courses with over 80% achieving high grades. Progression rates were high, with 94% of students progressing to university, employment or an Apprenticeship. We have also featured in the top 25% for value-added, nationally.

We offer a broad Enrichment Programme including a wide range of sporting activities such as basketball, football, cricket, table tennis, rugby and training in our fitness gym. There are many clubs you can join, and you can participate in the Student Partnership Council, Duke of Edinburgh Awards or become a Student Ambassador.

The College has high quality industry standard facilities which include a state-of-the-art digital media suite, photography studio, commercial Hair, Beauty and Spa salons and a virtual nursery facility. New for 2020/21 is a Construction Skills Centre to prepare students for the Construction trades. The Learning Resource Centre provides specialist support facilities, alongside Client Services areas including a Careers Advice Centre and Common Room space for leisure and networking. The site also includes a competition standard sports hall, science labs and a football pitch.

John Ruskin College has been accredited with the full Matrix quality kite mark relating to its excellent advice and guidance, and was placed 3rd at the National Centre for Diversity Grand Awards 2019 amongst the top 100 organisations that they work with.

### What our Students say:

*"The teachers are always ready to help students achieve their goals"* **Bismark – Level 3 Sport**

*"The College is a friendly College with a lot of different personalities and cultures. It has a positive attitude to Learning"* **Akilah – Level 2 Beauty Therapy**

### Important Information

Open Events:	<p>Wednesday 30 September 2020 5.30pm-8pm</p> <p>Thursday 22 October 2020 5.30pm-8pm</p> <p>Saturday 21 November 2020 10am – 2pm</p> <p>Wednesday 3 March 2021 5.30pm-7.30pm</p> <p>Saturday 19 June 2021 10am – 1pm</p>
Address:	Selsdon Park Road, Croydon, CR2 8JJ
Public Transport:	Buses 64, 130, 353, 354, 359, T31, T32, T33 stop near the College. Tram Gravel Hill Line 3
Applications:	Visit our website for course information and to apply. Don't forget our Open Events where you can take a tour of the College, and meet with tutors and current students.

**Contact:** Ms E Nicholls | Sixth Form Administrator

**Tel:** 020 8679 0062 ext 348

**E-mail:** nichollse@nmbec.org.uk

**Website:** www.nmbec.org.uk



**BACK TO CONTENTS**

**1**

Getting Started

Outstanding pastoral care and a commitment to achieving excellence are at the heart of our close-knit community. When you join the NMBEC Sixth Form you will benefit from tailored subject pathways that allow you to achieve your full potential. You will be challenged and supported in equal measure through regular monitoring and reporting. You will also be able to access a range of opportunities to give you a fully rounded Sixth Form experience.

Our Sixth Form is based in a purpose built Sixth Form Centre which meets the needs of all twenty first century students.

**2**

Traineeships, Apprenticeships & Jobs

### Why study at NMBEC?

Being a member of the NMBEC Sixth Form gives you the opportunity to stretch yourself academically and get involved in a wide range of activities all within a supportive and friendly environment.

We encourage you to think creatively, work independently and develop the life skills necessary for you to succeed, be that in the workplace, at university or as an apprentice.

The college offers a wide range of A-Level subjects alongside a number of vocational qualifications.

In April 2017, Ofsted commented that "Norbury Manor is a positive environment for students in the sixth form. Students grow into responsible, thriving young adults. Student show self-discipline and work hard. They achieve good qualifications, suitable to their needs. They move on successfully to universities, apprenticeships, further education and employment."

The majority of our students go on to further education and students are fully supported throughout the UCAS application process. Our Careers Advisor also gives up to date careers advice and supports students in the key decisions that shape their future.

OFSTED also commented : "Sixth-form students fare well in their A levels. The school offers a wide range of academic courses, with some relevant applied courses too. The options meet students' needs. Staff provide good, impartial guidance about courses available at the school and elsewhere. Most Year 11 pupils join the sixth form. They value the continuity from key stage 4 into post-16."

So, if you are forward thinking and excited about the opportunities available to you here, you need to visit us at our Open Evening.

### What our students say:

*"I started at NMBEC in Year 7 and chose to stay in the Sixth Form as the staff were really helpful and I knew I would benefit from this continuing support working towards my A Levels.*

*I studied Geography, Textiles, English and Economics at Norbury Manor and have now completed my degree in Geography at the University of Hull. I now teach at an international school in Shanghai.*

*Being at Norbury Manor allowed me to become more confident, independent and motivated and I have many positive memories looking back."*

**Stacey-May**

### Important Information

Open Event:	Wednesday 23 September 2020 from 5pm-8pm Wednesday 7 October 23 October 2020 from 6pm-8.30pm
Address:	Kensington Avenue, Thornton Heath, CR7 8BT
Public Transport:	Buses: 50, 109, 250 Train: Norbury Station
Applications:	To guarantee consideration for an interview please apply by Friday 22 January 2021 <ul style="list-style-type: none"> <li>• Norbury Manor Sixth Form is now only open to girls.</li> <li>• External applicants are welcome to apply to this sixth form.</li> <li>• For information on our admission criteria, please visit the school's website</li> </ul>

**4**

Application Form

**5**

Vocational, A Level and GCSE Course Listings

**6**

School and College Sixth Forms in Croydon

## BACK TO CONTENTS

1

Getting Started

2

Traineeships, Apprenticeships &amp; Jobs

3

Advice for Pupils with Special Educational Needs or Disabilities (SEND) or Additional Support Needs

4

Application Form

5

Vocational, A Level and GCSE Course Listings

6

School and College Sixth Forms in Croydon

**Contact:** Jean King | Pastoral Manager, KS5

**Tel:** 020 8656 0222

**Email:** [jean.king@oasisshirleypark.org](mailto:jean.king@oasisshirleypark.org)

**Website:** [www.oasisacademyshirleypark.org](http://www.oasisacademyshirleypark.org)

Oasis Academy Shirley Park sixth form has ranked first in Croydon for student progress since 2017/2018 and in 2019 ranked 46th out of all 4338 colleges and sixth form colleges in the UK, placing it in the top 1% nationally. The sixth form offers an inspirational, high achieving, diverse and supportive community. High quality teaching across a full range of A Levels and Level 3 vocational qualifications, places a strong focus on helping students develop their independence and transferable skills for successful lifelong learning. The curriculum is enriched with a diverse range of extracurricular opportunities and all students are provided with personal careers guidance to empower and support them in securing aspirational post 18 destinations.

### Why study at Oasis Academy Shirley Park?

#### Top Provider for KS5 in Croydon based on progress since 2017/2018

At Oasis Academy Shirley Park our students and teachers work collectively to overcome all barriers to success. Our 2019 progress score of 0.5 is categorised as 'well above average', the highest band for student progress in the country and we are honoured to be the only KS5 provider in Croydon to reach this band.

We are proud of our diverse and highly integrated community. We welcome over 1/3 of our students from other secondary schools. Our mixed year 12 and 13 tutor groups encourage students to develop positive supportive relationships across year groups which help our year 12 students to navigate the challenging transition from key stage 4 to 5. Our committed pastoral team includes tutors, heads of year and pastoral manager of sixth form, as well as an active student leadership team. Our sixth form leaders offer an open office policy, providing personal advice and guidance to our students on a daily basis.

We empower and support our students to securing aspirational destinations. In 2019, 90% of our students progressed to their 1st choice university and 100% were accepted to either their 1st or 2nd choice, meaning none were forced through the stressful clearing process. This year over 50% of our students are holding offers for at least one Russell group university, including the University of Cambridge, University College London, London School of Economics and many more. Our careers programme includes supporting our year 12 students to secure a specialist 2-week work placement. We have built connections with a

number of world leading organisations and our students have successfully secured places on programmes with these partners including; Ralph Lauren, Ashurst International Law Firm, TWI Engineering Research Organisation, National Rail, Marie Claire Magazine, Nuffield Foundation, UCL, Imperial Collage London, LSE, University of Southampton and Durham University.

We understand the importance of engaging parents in their child's education and alongside two parents' evenings in each academic year, we run parent information evenings where we provide guidance on supporting their child to achieve their potential.

#### What Ofsted says:

*"In both 2017 and 2018, students' progress on A-level courses was well above the national average."*

*"All students who left the school in the last two years went into education and training, with over 90% of students going onto university."*

#### Important Information

Open Event:	Thursday 22 October 2020 6pm to 8pm
Address:	Shirley Road, Croydon CR9 7AL
Public Transport:	Buses: 289, 130, 367, 197, 312 Tram: Woodside Train: East Croydon
Applications:	Prospectus and application form available from autumn term 2020 Latest date for applications – Friday 08 January 2021 External applicants are welcome to apply to this sixth form. For information on their admission criteria, please visit the school's website.

**BACK TO CONTENTS**

**1**

Getting Started

**2**

Traineeships, Apprenticeships & Jobs

**3**

Advice for Pupils with Special Educational Needs or Disabilities (SEND) or Additional Support Needs

**4**

Application Form

**5**

Vocational, A Level and GCSE Course Listings

**6**

School and College Sixth Forms in Croydon

**Contact: Mr S Cox | Director of Sixth Form**

**Tel: 020 8657 8935**

**Email: [quest6@thequestacademy.org.uk](mailto:quest6@thequestacademy.org.uk)**

**Website: [www.thequestacademy.org.uk](http://www.thequestacademy.org.uk)**



Our motto, Learning Changes Lives, reflects our belief in the importance of our work. We commit to ensuring every student makes outstanding progress. We have high expectations, offer the finest teaching and insist on the best standards of behaviour and respect. We offer a wide range of enrichment activities to extend learning and promote leadership, teamwork, reflection, confidence and high self-esteem. Our strength comes from strong partnerships with parents, the community and the close links we have with The Collegiate Trust and Riddlesdown Collegiate.

### Why study at The Quest Academy?

The 2019 cohort of students achieved for the 6th year running over a third of all grades being A\*- B and over two thirds of results being A\*- C. The 2018 cohort achieved an academic positive progress score of 0.26 which is above average and the third highest provider in a 5-mile radius. In 2017, 76% of all grades were A\*- C, at A Level or equivalent. 98% of all Level 3 BTEC grades were Merit or better, with 50% achieving a Distinction. Since opening in 2012, we have increased the breadth of post 16 courses we offer each year, whilst continuing to achieve red hot ALPS grades. Quest students have been awarded places at the most competitive tertiary institutions, including Oxford University, and on highly sought-after apprenticeships.

A wide range of 25 courses are offered. These are mainly A levels but we also offer a few highly academic vocational options that can be taken in combination with A Levels. All our courses are to prepare students for University or highly sort after apprenticeships. This includes giving all our students the opportunity to complete an extended research project qualification.

Students benefit from small tutor groups and support from a dedicated and committed staff team. A whole-school new build, includes a Sixth Form wing housing a common room, computer suite, dedicated specialist classrooms and seminar rooms. Quest6 students have access to cutting-edge, state-of-the-art facilities and learn in a modern, peaceful, exceptional education environment.

In addition to academic excellence, a wide range of enrichment activities is offered, to extend learning in a range of contexts and promote leadership, teamwork, reflection, confidence and high self-esteem. The programme covers all aspects of personal, social, health, citizenship and careers

education, as well as many extra-curricular activities including cadets and the Duke of Edinburgh award scheme.

At Quest6, you will work hard to achieve your academic potential and develop the personal qualities that are a prerequisite to future success. Quest will support you in writing a personal statement that demonstrates your strengths and abilities.

### What our students say:

*"Quest was the epitome of a rollercoaster, from its ups and downs to its smiles and screams! Indeed, A Levels were the most stressful of times, but also most captivating in terms of the knowledge gained as well as the skills honed. The teachers served as exemplary models for us to enter higher education and their constant voluntary help is something I was certain to not find elsewhere."*

**Mohamed Iman now at Oxford University**

*"Tutors get to know you well and how to get the best from you. Quest6 has a homely feel to it and I really enjoyed my time there. It was hard work, but I received lots of help too including introducing me to The Social Mobility Foundation and EPQ - René Andersen now at the University of Essex"*

**René Andersen now at the University of Essex**

### Important Information

Address:	Farnborough Avenue, South Croydon Surrey, CR2 8HD
Public Transport:	Buses: T33, 130, 466, 64 Tram: Gravel Hill
Applications:	All students wishing to apply are advised to attend the Open Evening and submit an early application. All the details can be found on our school website.



# Riddlesdown Collegiate, College VI

**Contact:** Mike Smith | Head of College VI  
 Jay Weeks | Deputy Head of College VI  
**Tel:** 020 8668 5136  
**Fax:** 020 8660 9025  
**E-mail:** [viapplications@riddlesdown.org](mailto:viapplications@riddlesdown.org)  
**Website:** [www.riddlesdown.org](http://www.riddlesdown.org)



BACK TO  
CONTENTS

1

Getting  
Started

2

Traineeships,  
Apprenticeships  
& Jobs

3

Advice for Pupils with  
Special Educational  
Needs or Disabilities  
(SEND) or Additional  
Support Needs

4

Application  
Form

5

Vocational, A Level  
and GCSE Course  
Listings

6

School and College  
Sixth Forms  
in Croydon

In College VI we have high expectations for academic progress and independent learning. However, we believe that progress is about more than solely examination results. We provide a safe, positive, respectful community within which students are provided with a wealth of opportunities. We encourage students to take risks, rise to challenges and show resilience when faced with adversity. All students have access to high quality university and careers advice in order to support them in making well-informed decisions for their future. In College VI we aim to provide students with a supportive environment for academic and personal success.

## Why study at Riddlesdown

College VI offers over 300 students the opportunity to study a wide variety of subjects.

We have excellent facilities, including modern science laboratories, dedicated sixth form classrooms; state of the art Apple Mac suites, and a Performing Arts block. There is a brand-new, large and inviting Common Room, a large well-resourced Library and a College VI café.

Each student is allocated a personal tutor who will support them throughout their time with us and provide one to one guidance on the University application process. There are many opportunities for extra-curricular activities and leadership, for example, the Duke of Edinburgh Gold Award, sport, mentoring, debating, student led societies, incredible performing arts opportunities and our new sports academies for Rugby and Football. We have active College VI student leaders to liaise with teaching staff and organise charity and social events, such as the College VI Prom. We provide a varied guest speaker programme to give students the opportunity to gain advice and learn from individuals from a variety of backgrounds and industries.

We place a high emphasis on pastoral care and guidance to help students adapt to the demands of Key Stage 5 and prepare them for the future.

## What our students say:

*"The teachers I have had contact with have always been unfailingly enthusiastic and encouraging, which is the most important thing when the level of work is so difficult. This not only allows you to excel academically, but it increased my confidence, helping me develop as a person."* **Amy**

*"There's a real sense of community within College VI. I don't think I would have felt as much of a part of a community if I had gone to another school."* **Kirsty**

*"I have met lifelong friends and teachers who have really gone the extra mile for me. There is an obvious emphasis on working hard to meet your full potential but the College is also somewhere I can relax and have fun too."* **Merita**

*"Students leave the school as thoughtful, mature and well-adjusted young people who are ready to take up their place in society as responsible citizens"*

**OFSTED May 2016**

## Important Information

Open Event:	Please check the website for up to date information.
Address:	Honister Heights, Dunmail Drive, Purley, Surrey, CR8 1EX
Public Transport:	Buses: 412 Train: Riddlesdown Station
Applications:	Students and parents are encouraged to attend our Open Event before applying. Applications should be submitted online by 11 December 2020

# Shirley High School Performing Arts College

**Contact:** Ms Doherty | Vice Principal  
**Tel:** 020 8656 9755 **Fax:** 020 8654 8507  
**E-mail:** 6thform@shirley.croydon.sch.uk  
**Website:** www.shirley.croydon.sch.uk



BACK TO  
CONTENTS

1

Getting  
Started

Shirley High School is an award winning post 16 provider. The sixth form is proud of its academic success. Results have been consistently strong.

In 2017-18 the school performance tables showed Shirley High Sixth Form in the top 5% for A Level value added performance and top 10% for vocational performance.

The 2019 A level results were first rate with 100% achieving A\* - E grades at A level, 100% Distinction\*- Merit at BTEC Level 3.

In 2019 100% of students who applied to university got their first choice! Many went on to Russell Group universities. In 2020 we also had success with Oxbridge applications.

As a developing sixth form (7 years old) Shirley High School has continued to extend its sixth form provision and now offers a wide range of A levels alongside BTEC Diplomas. A dedicated Sixth Form Block was opened in 2013 with study areas and a modern common room. Independent study areas are supported by learning mentors.

2

Traineeships,  
Apprenticeships  
& Jobs

## Why study at Shirley High School?

The Sixth Form at Shirley High School aims to provide a high-quality post-16 education which will enable students to reach the best possible standards of achievement in both academic and personal development. High expectations, first class teaching, individual support and excellent relationships are key features of the Sixth Form at Shirley. The school provides first class independent study areas that are supervised by staff and help to create a strong learning ethos. The enrichment programme offered at KS5 enhances students work in the classroom and helps to form 'character'. Involvement in charitable events, the Duke of Edinburgh Award, Arts performances, mentoring schemes, work experience and many other activities enables students to develop skills and confidence. All students are encouraged to take responsibility for their own learning so that, through individual effort and teamwork, they attain the highest possible academic success and develop an informed approach to life; one that will be of lasting benefit to themselves and society.

## Courses Offered

**A Levels:** Art & Design (Fine Art & Graphics), Biology, Business, Chemistry, Computing, Design Technology, Drama & Theatre Studies, English Language, English Literature, Geography, History, Mathematics, Media Studies, Photography, Physical Education, Physics, Psychology, Religious Studies, Sociology

**BTEC Diplomas :** Business, Childcare, Dance, Music, Health and Social Care (Level two) & Public Services

## Entry Requirements

- To study three A levels, students are required to obtain 5 x GCSE passes at grade 6 and above. They are expected to achieve a minimum of GCSE grade 5 in English and Mathematics.
- To study a BTEC Level Three course students are required to obtain 5 x GCSE passes at grade 4
- To study Health and Social Care BTEC level 2 students are required to obtain 5 x GCSE passes.

## What our students say:

*"With the help from my teachers at Shirley Sixth Form I have been able to fulfil my dreams."*

**Mufaro Shambare**

*"Teachers find time to give one to one support and really care about the individual. I have thoroughly enjoyed my time at Shirley High Sixth Form."*

**Arianne Carless**

*"There are always teachers around to help you; they always give you the support you need."*

**Fahana Matlib**

## Important Information

Open Event:	Tuesday 10 November 2020 6-8pm
Address:	Shirley Church Road, Croydon, CRO 5EF
Public Transport:	Bus: 119, 130, 194, 198, 367, 466, 494

3

Advice for Pupils with  
Special Educational  
Needs or Disabilities  
(SEND) or Additional  
Support Needs

4

Application  
Form

5

Vocational, A Level  
and GCSE Course  
Listings

6

School and College  
Sixth Forms  
in Croydon



BACK TO  
CONTENTS

1

Getting  
Started

2

Traineeships,  
Apprenticeships  
& Jobs

3

Advice for Pupils with  
Special Educational  
Needs or Disabilities  
(SEND) or Additional  
Support Needs

4

Application  
Form

5

Vocational, A Level  
and GCSE Course  
Listings

6

School and College  
Sixth Forms  
in Croydon

**Contact:** Dr Woodburn | Director of Sixth Form

**Tel:** 020 8761 1426

**E-mail:** [kwoodburn@sjc.ac](mailto:kwoodburn@sjc.ac)

**Website:** [www.stjosephscollege.org.uk](http://www.stjosephscollege.org.uk)

**Online application:** <https://stjosephscollege.applicaa.com>



Choosing where to study after completing GCSEs is a big decision and we are delighted that St Joseph's College is one of your Sixth Form options. St Joseph's College offers quality teaching, supported learning and strong pastoral provision. Your teachers will consistently challenge you to think for yourself, become an independent learner and fulfil your potential.

### Why study at St Joseph's?

We offer a broad curriculum that ranges from BTEC Level 3 through to Advanced Level (A-Level) courses. Alternatively, if you are passionate about sport we offer a Level 3 Sport & Exercise Science programme in partnership with Chelsea FC Foundation (<http://www.stjosephscollege.org.uk/sport-exercise-science-with-chelsea.html>). In addition to subject lessons, students engage with weekly pastoral sessions, an interactive and immersive Life Skills schedule, a student-led Student Union, a structured leadership programme and in-house mentoring, all of which make up a dynamic academic package.

At St Joseph's College, we provide personalised guidance for every student through our pastoral and vocational tracking programme and our Sixth Form Tutors and careers advisors are experts at supporting your ambition, whether it be early entry medicine or a practical apprenticeship. UCAS support, visits to University Open Days and aspirational higher educational choices are also features of our pastoral support programme and lead all students to reach for their highest potential. Last academic year, 95 % of A-level students secured grades A\*- E, allowing them to access a wide range of universities, with A-level results in 75 % of our subjects exceeding the local and national averages. As for our vocational students, 100 % of students secured D\*D\*D\* - DDM and went on to secure university places and apprenticeships.

St Joseph's College Sixth Form is open to all students between the ages of 16-19 who wish to continue their studies beyond the age of 16. Entry into the Sixth Form is based on: examination results, a formal interview, and a reference/recommendation from your previous school. We recognise qualifications outside of the GCSE structure should they represent equivalent pass levels. Pre-requisite subject requirements can be found in our prospectus on our website <http://www.stjosephscollege.org.uk/6th-form.html> along with the link to our electronic online application form.

We firmly believe in education beyond the classroom. In addition to the formal programme of study, a range of enrichment activities (e.g. Sports clubs, discussion groups, Extended Project Qualification etc.) are provided to ensure that our students develop as well rounded and confident young adults, with weekly enrichment sessions timetabled every Wednesday afternoon. All students take part in our leadership programme and also have access to our extensive sporting facilities; a fully equipped gymnasium, rock climbing wall and swimming pool.

### What our students say:

*"The 6th Form is small but this is highly beneficial as you can build a closer relationship with teachers and staff, thus increasing your confidence during lessons and allowing you to reach your full learning potential. The fact everyone at the 6th Form knows your name builds a sense of community and friendship." - Hamzah*

### Important Information

Open Event:	Tuesday 13 October from 5:30-7:30 pm, with tours available at 5:45 pm and a presentation at 6:00 pm.
Address:	Beulah Hill, SE19 3HL
Public Transport:	Buses: 137, 196, 249, 468 Train: West Norwood Station
Applications:	All applications must be submitted via the online application portal and the application deadline for internal applicants is Friday 6 November and for external applicants is Friday 22 January.

# The BRIT School for Performing Arts and Technology

**Contact:** Stuart Worden | Principal

**Tel:** 020 8665 5242

**E-mail:** [info@brit.croydon.sch.uk](mailto:info@brit.croydon.sch.uk)

**Website:** [www.brit.croydon.sch.uk](http://www.brit.croydon.sch.uk)

[www.facebook.com/thebritschool](https://www.facebook.com/thebritschool)

[www.instagram.com/thebritschool / @TheBRITSchool](https://www.instagram.com/thebritschool/)



BACK TO CONTENTS

1

Getting Started

2

Traineeships, Apprenticeships & Jobs

3

Advice for Pupils with Special Educational Needs or Disabilities (SEND) or Additional Support Needs

4

Application Form

5

Vocational, A Level and GCSE Course Listings

6

School and College Sixth Forms in Croydon

The BRIT School is the leading FREE Performing Arts and Technology School, providing a unique creative education for over 1,400 pupils aged between 14 and 19 in the fields of broadcast media, digital design, community arts, music, technical and performing arts. The BRIT School is open to hardworking, dedicated individuals who love the creative, digital or performing arts. 97% of students go into higher education, training or employment on leaving school.

## Why study at The BRIT School?

The BRIT School believes in providing young people with an education which promotes artistry, discipline, social responsibility and ambition, and encourages them to become successful in the demanding world of the creative industries. Many graduates contribute significantly to the UK's creative economy and reputation which is rapidly growing; Adele, Rex Orange County, Katy B, Cush Jumbo, Jessie J, Tom Holland, Gemma Cairney, Katie Melua and Joivan Wade are just a few recognisable names. However alumni are working in all facets of the industry as world class dancers, lighting designers, West End actors, film directors, graphic designers and architects, makeup artists, production runners, stunt artists, teachers and writers. The School is also proud of the academic success which leads students to study at the top universities and to also become entrepreneurial and business minded. Students specialise in one of ten creative courses and have to work doubly hard because they also study for GCSEs, AS and A levels or BTECs with results above national average. In 2019 48.28% of students gained a Distinction at UAL which is the highest possible grade and is the equivalent of three As at A-Level. The BRIT School had 100% pass rate with BTEC Level 3 certificates which we offered in addition to students studying UAL, including 42% Distinction\*. The BRIT School had strong A Level results including 71% A\*-C grades and 40% A\*-B grades.

## The Courses we run at post -16 are:

- Community Arts
- Dance
- Film and Media
- Production Practice
- Interactive Digital Design
- Music

- Music Technology
- Musical Theatre
- Production Arts
- Theatre
- Visual Arts and Design

Please note Post-16 offers the UAL level 3 Diploma also equivalent to 3 A levels.

## What our students say:

*"The industry level of teaching set me up efficiently for the world of work. I honestly would not have got as far as I have with my career if it wasn't for BRIT."*

**Jonathan Chabala, Film & Media Production graduate now working at Sony Music**

*"There is truly no other place like it and I continue to recommend each and every young person who is interested in a career in production/technical theatre and events to attend the course."*

**Daniel Proctor, Production Arts graduate now working at Sky**

## IMPORTANT INFORMATION

Open Event:	Please go to website for online open event date. <b><a href="http://www.brit.croydon.sch.uk">www.brit.croydon.sch.uk</a></b>
Address:	60 The Crescent, Croydon CR0 2HN
Public Transport:	Bus: 50, 468, 75, 157 Trains: Selhurst and East Croydon
Applications:	Application form and prospectus can be found online <b><a href="http://www.brit.croydon.sch.uk">www.brit.croydon.sch.uk</a></b> from September 2020

# Thomas More Catholic School

**Contact:** Ms L Yost | Head of sixth form

**Tel:** 020 8668 6251

**Fax:** 020 8660 9003

**E-mail:** lyo@tmore.org.uk

**Website:** www.tmc.org.uk



## BACK TO CONTENTS

# 1

Getting Started

# 2

Traineeships, Apprenticeships & Jobs

# 3

Advice for Pupils with Special Educational Needs or Disabilities (SEND) or Additional Support Needs

# 4

Application Form

# 5

Vocational, A Level and GCSE Course Listings

# 6

School and College Sixth Forms in Croydon

**Thomas More Catholic School is a mixed Catholic comprehensive school in the heart of Purley, recently judged as good by Ofsted. It has a strong Christian ethos that is inclusive and welcomes all faiths. We have a growing and expanding Sixth Form with good results. We offer a full range of A level and BTEC courses and we aim to provide opportunities for young people to develop academically, spiritually and socially.**

## Why study at Thomas More?

Thomas More is an exciting place to be and our Sixth Form students fully share the motto of the school – ‘To Care, To Learn, To Achieve’ with a Sixth form ethos of ‘Believe and Achieve’. We are a close knit and friendly community.

The school aims to provide a high quality Post-16 education, which will enable students to reach the best possible standards in both academic and personal development. High expectations, strong teaching, individual support, voluntary opportunities and excellent relationships with staff, students and parents are all key features of our Sixth Form. We have excellent pastoral care with a well-established team of tutors. In addition, we provide students who may need it with mental health support and counselling.

At Thomas More you will have the opportunity to take part in a wide range of enrichment opportunities such as sports, debating, mentoring, Charity work, NCS, the Duke of Edinburgh award scheme and student leadership programmes. Independent study and supervised study sessions also make up part of all students’ timetables and we encourage independence and resilience throughout.

Excellent careers and UCAS guidance is given to all students, with regular workshops and visits, which fully prepare and inform students about the choices they have for their future – be it at University, an apprenticeship or employment. We have a wonderful Sixth Form area comprising of an IT suite, work room and common room. We benefit from having a partnership with the University of Sussex and we take students on many University visits and higher education fairs, as well as the annual UCAS convention. A rewards trip in the summer for year 12 and prom in year 13 help to celebrate our students’ successes.

If you want to study in a friendly, academic and supportive environment, then Thomas More is the place for you. Visit us on our open evening to tour the school and find out what we are all about.

## What our students say:

*“The support system in the school is amazing, superb and consistent. Teachers are ready to help, even beyond regular class lessons, as they are willing to go the extra mile with individual tutoring. The relationship between the students is very productive – everyone is concerned about each other and you can go to them for help.”*

*“It’s a great school, great teachers, great atmosphere – helps you strive for your best.”*

*“A very inspiring school because the teachers really care a lot about the students.”*

*“An extremely supportive and friendly atmosphere whilst studying for A levels and applying for universities.”*

## Important Information

Open Event:	TBC
Address:	Russell Hill Road, Purley, Surrey CR8 2XP
Public Transport:	Bus: 60, 127, 166, 289, 405, 407, 412, 455 Train: Purley Station
Applications:	Prospective students and their Parents/Guardians should attend the Open Evening and submit their application as early as possible.

# Woodcote High School

**Contact:** Mrs M Edwards | Director of Sixth Form

Ms L Bird | Head of Sixth Form

**Tel:** 020 8668 6464

**Fax:** 020 8660 9038

**E-mail:** enquiries@woodcotehigh.com

**Website:** www.woodcote.croydon.sch.uk



## BACK TO CONTENTS

# 1

Getting Started

# 2

Traineeships, Apprenticeships & Jobs

# 3

Advice for Pupils with Special Educational Needs or Disabilities (SEND) or Additional Support Needs

# 4

Application Form

# 5

Vocational, A Level and GCSE Course Listings

# 6

School and College Sixth Forms in Croydon

Woodcote Sixth Form have once again celebrated an excellent year of student achievement. The results this year and particularly the substantial achievements at the highest A\* and A grades, have further consolidated its position as one of the highest achieving schools/colleges in the area.

The students' excellent grades have enabled them to succeed in obtaining places to study diverse degree courses, from Architecture to Veterinary Science at top universities including Warwick, Birmingham, Kings College London and Sussex. Additionally, two students have taken up places to study Medicine at UCL and Imperial. Many more students secured impressive employment and advanced apprenticeship opportunities.

Woodcote Sixth Form is a thriving and welcoming environment where all students are fully supported to achieve their full potential and make a positive contribution to the life of the school. What defines Woodcote Sixth Form is its commitment to secure students' successful entry into higher education, apprenticeships and employment through its high-quality pastoral support, pursuit of academic excellence and wide-ranging extra-curricular provision.

### Why study at Woodcote sixth form?

Our most recent Ofsted report recognised that our 'students were very positive about their experience in Woodcote High sixth form. They were appreciative of the strong support that teachers give them to improve their academic work and the guidance they receive in applying for university places. One student typical of others said, "Coming to Woodcote Sixth Form is the best decision I have made in a while."'

We offer opportunities to gain qualifications and employment skills which are matched to the needs of individual students and which prepare them both for their next steps and future lives. Great care is taken to ensure that students have tailored curriculum pathways which are right for them and these include a wide range of A Level and Vocational courses.

Our ethos encourages students to look beyond their current horizons and consequently we provide significant opportunities to develop both their talents and interests through the curriculum enrichment programme and a variety of extra-curricular activities. Students are encouraged to adopt leadership roles within the school and to play an active part in our School Officials Team.

For more information about Woodcote's Sixth Form visit [www.woodcote.croydon.sch.uk](http://www.woodcote.croydon.sch.uk) or visit us at our Open Evening.

### What our students say

"A great place to study! The staff made my transition from Year 11 really smooth and helped me throughout Year 12."

"I was daunted when I joined from my old school, but Woodcote Sixth Form was the right choice. Everyone helped me settle into both my new surroundings and with my A Level courses."

"Woodcote helped me so much with my UCAS application. The staff went above and beyond to make sure I had the best chance of succeeding."

### Important Information

Open Event:	Thursday 22nd October 2020 6.30pm-8.30pm
Address:	Meadow Rise, Coulsdon, Surrey, CR5 2EH
Public Transport:	Bus: S1, 434, 463 Train: Coulsdon South, Coulsdon Town
Applications:	Prospectus & application form will be available from October 2020. Latest date for applications is the 15th January 2021





**BACK TO  
CONTENTS**

**1**

Getting  
Started

**2**

Traineeships,  
Apprenticeships  
& Jobs

**3**

Advice for Pupils with  
Special Educational  
Needs or Disabilities  
(SEND) or Additional  
Support Needs

**4**

Application  
Form

**5**

Vocational, A Level  
and GCSE Course  
Listings

**6**

School and College  
Sixth Forms  
in Croydon

Do you know you have to have to remain in some form of education or training until your 18th birthday? This doesn't mean that you have to stay in school. Working together with providers across the borough, the Youth Engagement team offer a range of resources and activities that will help you to develop your knowledge, skills and confidence, and also enable you to make choices that will positively impact on your career journey.

**[WWW.YOUNGCROYDON.ORG.UK](http://WWW.YOUNGCROYDON.ORG.UK)**



@Young\_Croydon



Young Croydon