

SAFFRON VALLEY COLLEGIATE

Health and Safety Policy



**Formally adopted by Management Committee:
November 2014**

Reviewed: Autumn 2019

Review Date: Autumn 2020

The Saffron Valley Collegiate

Mission Statement

The Saffron Valley Collegiate seek to provide a personalised educational experience that identifies and responds to the circumstances and needs of each individual young person and in doing so will enable them to fulfil their potential and become successful young people.

EQUALITIES STATEMENT:

All who work at the PRU are committed to the celebration of diversity, and the challenging of disadvantage and discrimination, in all its forms.

These values are explicit to the ethos of Saffron Valley Collegiate and implicit in all policies and practices.

This policy will be publicised on-line to staff, students and parents/carers each academic year.

Statement of Intent

The Saffron Valley Collegiate Management Committee and Head Teacher recognise and accept their responsibility for ensuring, so far as is reasonably practicable, the health, safety and welfare at work of all employees, pupils and other persons who may be affected by any of the school's activities.

The Saffron Valley Collegiate Management Committee and Head Teacher's prime objective is to achieve and maintain a high standard of health, safety and welfare throughout the school and its activities. They will ensure that the school complies with the requirements of the Health and Safety at Work etc Act 1974 and associated legislation.

In particular, the Saffron Valley Collegiate Management Committee and Head Teacher aim:

- To operate within the structure & framework laid down by the Croydon Council.
- To ensure senior staff develop & maintain a culture within the school supportive of health, safety & welfare
- To establish an effective safety management structure & arrangements to implement requirements
- To ensure a systematic approach to the assessment & control of risks
- To ensure that employees are competent in the work that they are doing
- To ensure that employees actively participate in identifying hazards
- To minimise hazards entering the school
- To ensure the competence & management of contractors on school premises
- To monitor work practices & regularly review safety management systems

The Saffron Valley Collegiate Management Committee and Head Teacher will commit suitable resources (human, time and financial) to the achievement of these aims. They will seek competent advice from the Education Department's Safety Adviser or the Council's Safety Advisers as required.

Every employee is responsible for his/her own health and safety, as well as that of colleagues, pupils and others. Employees should co-operate with the school's management to achieve these aims.

The important contribution that employees and their representatives can make in improving health and safety is recognised and encouraged. The Saffron Valley Collegiate Management Committee and Head Teacher will establish and maintain a school safety committee for this purpose.

This statement and the accompanying organisation and arrangements will be reviewed on an annual basis.

This policy statement supplements:

- Croydon Council's general policy statement of intent;
- The People Department Health & Safety Policy.

The above, and other health and safety policies and guidance, may be downloaded by staff from Fronter.

Signed.....Dated(On behalf of Management Committee)

Signed.....Dated... Head Teacher

General Statement:

The designated Health and Safety Officer recognises the responsibilities under the Health and Safety at Work Act 1974 and related legislation. The Health and Safety Officer will safeguard as far as is reasonably practical, the Health and Safety and welfare of all staff who work at the PRU and the safety of the persons who may be affected by their work activities.

The Health and Safety Officer will take all reasonable practicable measures to ensure that the premises and any plant and substances provided for work use are safe and without risk to health.

The Health and Safety Officer reminds everyone working at the PRU that they have a duty under the Health and Safety at Work Act 1974 to ensure they work in ways which are safe and without risk to health both to themselves and others.

Organisational Arrangements:

The organisational arrangements are set out in **Appendix 1**. All persons employed within the PRU are made aware of the Health & Safety Policy.

Management Arrangements:

The Headteacher has overall responsibility for Health and Safety which has been delegated by the London Borough of Croydon. These responsibilities are delegated to various persons as written below.

Each Head of Provision is the Health & Safety Officer for their site.

The Health & Safety Officer is responsible for overseeing routine daily matters of Health & Safety. If an immediately dangerous situation is identified by the Health & Safety Officer that person has the authority to insist on appropriate action and then notify the Headteacher.

The Health & Safety Officer is responsible for Health and Safety matters in respect of the maintenance of the sites and buildings including the management of contractors. It is the responsibility of the Headteacher to inform the Health & Safety Officer of any works.

Staff

Staff are responsible for Health & Safety in their areas. They are responsible for carrying out good practice including risk assessments for their area especially when practical work is taking place. If any safety hazard is observed on a site a safety hazard form should be completed (see **Appendix 2**) and handed to the Health & Safety Officer immediately.

The Health and Safety Officer is responsible for Health & Safety in respect of the building. The Health and Safety Officer, in the first instance, is responsible for the

safe working of contractors on site, any problems being immediately reported to the Headteacher.

Senior Management Team

The Senior Management Team are responsible for nominating safety representatives and carrying out:

- Review of policy document
- Risk Assessment
- Reports relating to Health and Safety

Any member of staff may request a joint inspection of their teaching area.

Training

Identified training requirements should be brought to the attention of the Senior Management Team who will prioritise.

Fire Precautions

All staff and pupils are made aware of the procedure to follow in the event of fire. **(Appendix 4)** Fire notices are displayed through the school providing basic instructions. Fire practices will take place termly as a minimum requirement and will be logged in the Fire Safety Log Book as well as recorded electronically by the Business Manager

London Borough of Croydon Facilities Management Team are responsible for ensuring the testing of the fire alarm weekly from different points recording each test in the record book for KS3, KS4 North and KS4 South. John Ruskin College are responsible for the premises occupied by Cotelands and Springboard at the back of the college.

London Borough of Croydon Facilities Management Team are responsible for checking fire extinguishers and equipment on an annual basis and recording details of these checks in the record book for KS3, KS4 North and KS4 South. John Ruskin College are responsible for the premises occupied by Cotelands and Springboard at the back of the college.

First Aid

A designated First Aider is a trained person holding a current First Aid at Work Certificate. These persons have the responsibility for first aid on site. In the event of a serious injury or major illness the local Authority forms must be completed and appropriate action taken e.g. call an ambulance. Forms are available in the main office.

Incidents

If a bomb alert or intruder on site report is received there is a set procedure to follow. (Appendix 3)

Vandalism and Damage

All reports should be recorded and passed to the Senior Leadership Team.

Risk Assessment

The Health & Safety Officer in conjunction with the Senior Management Team will carry out annual reviews through inspection and take appropriate actions. (Appendix 5).

Accident Reporting

All accidents must be recorded & reported—Report forms available from Main Office

Visitors

All visitors must report and sign appropriate forms.

Lone working

All staff should be aware of the dangers of working alone on site. (See Guidance for staff working in isolation)

Centre journeys and offsite activities:

Reference should be made to Educational Visits policy.

Monitoring Effectiveness of Health & Safety Policy:

1. Annual Health & Safety check Senior Leadership Team
2. Monthly walks around PRU
3. Fire checks weekly—responsibility of London Borough of Croydon Facilities Management Team / John Ruskin College
4. Termly inspections with Headteacher

Further information: London Borough of Croydon, Health & Safety Consultancy, Bernard Weatherill House, 8 Mint Walk, Croydon, CR0 1EA. Telephone: 020-8760 5451
healthsafety.adviceline@croydon.gov.uk

Visitors and Contractors

The name and company of the person will be logged in the visitors' book. They will

also be required to visit Reception to sign out. The contractor will be referred to the Site Manger / Health and Safety Officer before any work is undertaken.

The Site Manager will give the contractor a booklet. The Site Manager and Contractor will then visit the site of the work to discuss the nature of the work so that both parties may be satisfied that the job may proceed safely.

Positive Handling:

The PRU's behaviour policy requires all staff members to work with young people in such a way that positive handling is used as a last resort, and in emergency situations to control or restrain pupils and children, where the usual methods of discussion, guidance and negotiation are not appropriate.

Procedures are in harmony with 'Use of Reasonable Force' (DfE, last reviewed autumn 2013). Incidents of positive handling recorded using the forms recommended by the local authority's health and safety advisory team, and will be reported on a termly basis to the School Organisation Sub-Committee of the Management Committee.

Any injuries relating to incidents of positive handling will be recorded in the accident file using the usual LA forms.

HEALTH & SAFETY OFFICER RESPONSIBILITIES

- To update the Health & Safety Policy annually.
- To cascade information to staff meetings.
- To ensure that appropriate reports of accidents are completed, filed and investigated where necessary.
- To ensure that Health & Safety developments are incorporated in the Health & Safety Plan.
- To have general oversight of Health & Safety in respect of PRU.
- To make arrangements and supervise fire drills.
- Health & Safety Officer will ensure premises meet the requirements of Health & Safety at Work Act.
- To ensure that fire regulations are met in relation to premises.
- To ensure security of school premises.
- On site management of works by contractors and their employers.
- To liaise with Management Team.

- To promote equality regardless of race, gender and disability throughout all H & S issues.

PRU Staff:

- To take day to day responsibility for matters relating to Health & Safety within their classrooms.
- To inform Health & Safety Officer of new electrical appliances for testing.
- To ensure they use appropriate safety hazard report forms for any matter's that need attention.
- To advise the Health & Safety Officer of any training requirements.

Policy Approved on Date

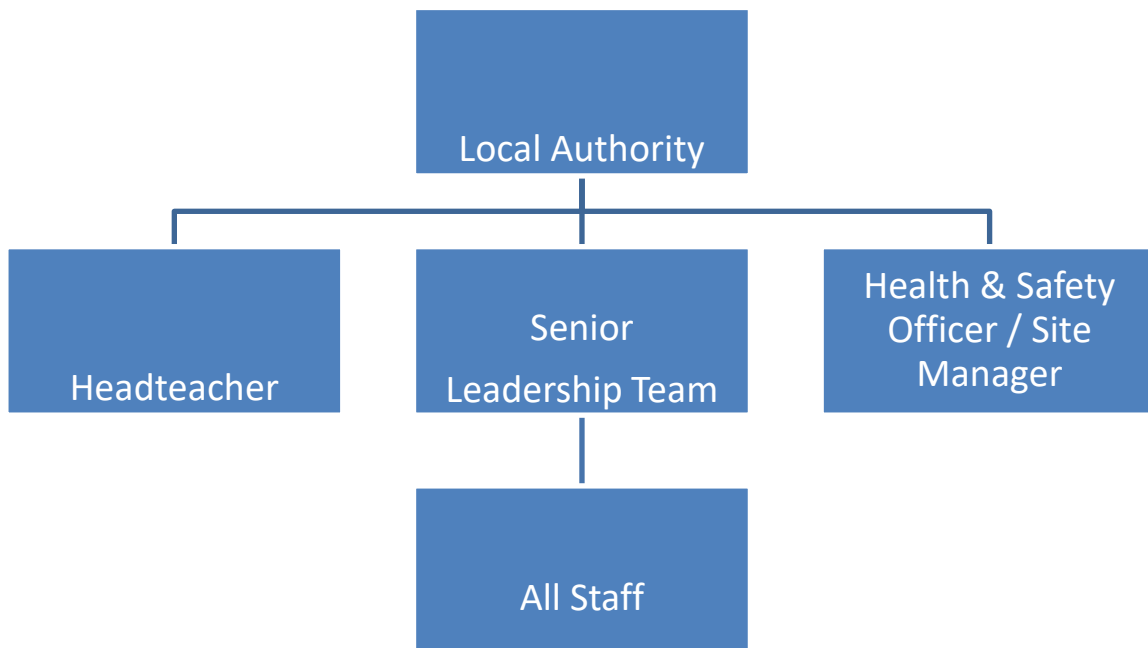
Signed on behalf of the Saffron Valley Collegiate Management Committee:

..... David Johnston (Chair)

Review Date:

Appendix 1

Management Chain for Health & Safety



Appendix 2

Safety Hazard Reporting Form:

Section 1: - Details of Safety Hazard

Exact Location of Safety Hazard:

Details of Safety Hazard identified:

Interim action needed:

Full name:

Hand this form completed to Health & Safety Officer.

Section 2—Follow up by Health & Safety Officer.

Safety hazard will be dealt with by:

Safety hazard has been reported to appropriate Department for investigation:

Date:

Signed:

Appendix 3

Health & Safety–Bomb Alerts and Incidents:

Bomb alerts will be immediately reported to Headteacher or Member of Senior Management Team if the Headteacher is not available.

An assessment of the information recorded will be made and a judgement as to the appropriate action to be taken on the following criteria:

In the case of a telephone call:

1. The time the call was received.
2. The sex and age of the caller.
3. Particular peculiarities of speech.
4. Audible background noise during the call.
5. Recent incidents at the Centre which may have caused a grievance.
6. If a code-word has been used during the call.

In the case of written communication:

1. The time the note was received.
2. The time indicated for the activation of the device.
3. The style of the writing.
4. The maturity of the script.
5. The quality of the spelling.
6. The type of paper, including envelope.
7. Recent incidents at the Centre which may have caused a grievance.
8. If a code word has been used.

A decision will be taken to either:

1. Take no action.
3. Inform Police.
4. Evacuate Centre.
5. Other appropriate action.

Facing a threat or intruder:

The following measures will be adopted to deal with any kind of threat gaining access to the Centre.

1. A predetermined coded announcement to alert staff to close their doors and retain their class.
2. Get outside help immediately.
3. If necessary set off internal panic alarm system.
4. Arrange for debriefing and counselling for students and staff directly affected by the situation.

Please alert Croydon Emergency Control immediately - 020 8688 1700

Appendix 4 (to be individualised for each PRU)

Cotelands and Springboard Fire Evacuation Procedure

Introduction

Cotelands is a pupil referral unit accommodating 13 staff and up to 40 pupils aged between 14 and 16.

Springboard accommodate up to 16 pupils aged 11-16.

The provisions are co-located at the back of John Ruskin College.

The premises have a fire alarm system consisting of automatic fire detection as well as break glass actuation points. Some specific doors are fitted with magnetic locks linked to the fire alarm system.

Procedure

This fire evacuation procedure is for during school hours and all staff will comply with this instruction.

Fire Alarm Actuation

On hearing the fire alarm (constant bell ringing), stop what you are doing and leave the building immediately by the nearest fire exit.

If you are located on the upper floors, exit via the nearest fire escape staircase.

Fire escape routes are signposted from each floor by directional fire exit signs.

Make your way to the fire assembly point, which is located outside the main gate, opposite Crossways.

Close all doors and windows, if there is time.

Do not return for personal belongings.

Fire alarm action notices are located at each fire alarm break glass point.

Action on finding a Fire

If you find a fire, warn colleagues in the immediate area by shouting "Fire!"

Raise the alarm by actuating the nearest Fire Alarm break glass call point.

Commence evacuation of the school.

Close doors and windows if there is time, and leave the building by the nearest exit.

Only attempt to fight the fire after the fire alarm has been sounded, and then only if you have been trained and it is safe to do so.

Fighting the Fire

Attack the fire using the appropriate fire extinguishers which are located at fire exits and by specific high risk equipment. Fighting a fire should only be carried out by staff who are trained in the use of extinguishers and then only when safe to do so.

Calling the Fire Brigade

On hearing the fire alarm the office staff will summon the Fire Brigade, dialling **999** ask for the fire brigade and provide the full address to the fire service operator. A notice detailing the action to be taken has been provided at this location.

Checking the fire zone

On hearing the fire alarm, the Head Teacher and/or Site Manager will proceed to the fire alarm panel to identify the zone where the fire alarm has actuated and then to the zonal area to confirm if there is a fire or other reason for the alarm actuation.

If a fire is confirmed the Head Teacher and/or Site Manager will report the findings at the fire assembly point and liaise with the Fire Brigade Officer. No one will be allowed to re-enter the premises, until instructed by the fire brigade or the Head Teacher and/or Site Manager.

If no fire is apparent, the Head Teacher will proceed to the fire assembly point. Once confirming all occupants are accounted for, the Head Teacher and/or Site Manager will return to the fire alarm panel, silence the fire alarm and then reset it. Once the fire alarm has been reset, the Head Teacher will then allow staff and students to re-enter the building.

Roll Call at Assembly point

Class teachers will lead their students to the fire assembly point, conduct a roll call to ensure all students are present and then liaise with the Head Teacher to inform that all students are cleared or account for those persons left in the premises.

Office staff will check that all visitors have been accounted for and liaise with the Head Teacher to inform that all visitors are cleared or account for those persons left in the premises.

The Head Teacher will inform the senior fire brigade officer that either the site is cleared or if persons are unaccounted for, their last known location.

Reoccupation of the premises

Staff and students will only be allowed to return to the premises when the all clear has been provided by either the fire brigade or the Head Teacher. The fire alarm must be reinstated and be fully operational.

Responsible Manager

The 'Responsible Manager' for the site is the Head of Provision, or the Assistant Head of Provision in the Head of Provisions' absence. The Head of Provision will take responsibility for:

- The fire evacuation and safety of the staff and visitors on site.

- Ensuring a roll call is carried out and
- Liaise with the fire wardens and the fire brigade, and
- The re-occupation of the premises in co-operation with the fire brigade, if attending.

Fire wardens

A significant number of existing staff are the nominated fire wardens and it is their responsibility to ensure that all classrooms have been evacuated.

- Head of Provision– is responsible for a ‘sweep’ of the building

Office staff

Are responsible to:

- Call the fire brigade
- Check that all visitors have been accounted for using the visitor’s book.
- Collect the registers and take them to the fire assembly point Report the success of the evacuation to the Head of Provision.
- Carry out a register check to ensure all students have been accounted for.
- Report the success of the evacuation to the Head of Provision.

Class teachers

Are responsible to:

- Lead students to the fire assembly point

Identified fire exit routes

The main Fire Exit route is through reception area and out onto Crossways. Fire exit routes are also located within the Art room ,Science room, staff room, the lobby area between the Springboard classrooms and the office of the Head of Provision of Springboard should the main exit route be impassable.

KS4 North Fire Evacuation Procedure

Introduction

KS4 North is a pupil referral provision accommodating staff and up to **54** pupils aged between 11 and 16. In the main building are pupils aged between 14 and 16. Incorporated on the KS4 North site is a KS3 Support and Assessment Group where individuals (aged between 11 and 13) work under the instruction/guidance of The Support and Assessment Group Manager and teaching staff to undertake work/care/support programmes in an outer demountable building.

The premises have a fire alarm system consisting of automatic fire detection as well as break glass actuation points.

Procedure

This fire evacuation procedure is for during school hours and all staff will comply with this instruction.

Fire Alarm Actuation

On hearing the fire alarm (constant bell ringing), stop what you are doing and leave the building immediately by the nearest fire exit.

If you are located on the upper floors, exit via the nearest fire escape staircase.

Fire escape routes are signposted from each floor by use of the 'running man' and directional fire exit signs.

Make your way to the fire assembly point, which is located by the main gate on the right hand entrance to the grounds.

Close all doors and windows, if there is time.

Do not return for personal belongings.

Fire alarm action notices are located at each fire alarm break glass point.

Action on finding a Fire

If you find a fire, warn colleagues in the immediate area by shouting "Fire!"

Raise the alarm by actuating the nearest Fire Alarm break glass call point.

Commence evacuation of the school.

Close doors and windows if there is time, and leave the building by the nearest exit.

Only attempt to fight the fire after the fire alarm has been sounded, and then only if you have been trained and it is safe to do so.

Fighting the Fire

Attack the fire using the appropriate fire extinguishers which are located at fire exits and by specific high risk equipment. Fighting a fire should only be carried out by staff who are trained in the use of extinguishers and then only when safe to do so.

Calling the Fire Brigade

On hearing the fire alarm the office staff will summon the Fire Brigade, dialling **999** ask for the fire brigade and provide the full address to the fire service operator. A notice detailing the action to be taken has been provided at this location.

Checking the fire zone

On hearing the fire alarm, the Head of Provision will proceed to the fire alarm panel to identify the zone where the fire alarm has actuated and then to the zonal area to confirm if there is a fire or other reason for the alarm actuation.

If a fire is confirmed the Head of Provision will report the findings at the fire assembly point and liaise with the Fire Brigade Officer. No one will be allowed to re-enter the premises, until instructed by the fire brigade or the Head of Provision

If no fire is apparent, the Head of Provision will proceed to the fire assembly point. Once confirming all occupants are accounted for, the Head of Provision will return to the fire alarm panel, silence the fire alarm and then reset it. Once the fire alarm has been reset, the Head of Provision will then allow staff and pupils to re-enter the building.

Roll Call at Assembly point

Class tutors will lead their pupils to the fire assembly point, conduct a roll call to ensure all pupils are present and then liaise with the Head of Provision to inform that all pupils are cleared or account for those persons left in the premises.

Office staff will check that all visitors have been accounted for and liaise with the Head of Provision to inform that all visitors are cleared or account for those persons left in the premises.

The Head of Provision will inform the senior fire brigade officer that either the site is cleared or if persons are unaccounted for, their last known location.

Reoccupation of the premises

Staff and pupils will only be allowed to return to the premises when the all clear has been provided by either the fire brigade or the Head of Provision. The fire alarm must be reinstated and be fully operational.

Responsible Manager

The 'Responsible Manager' for the site is the Head of Provision – Ian Walters, or the Assistant Head of Provision - Gay Broadberry, in the Head of Provision's absence. The Head of Provision will take responsibility for:

- The fire evacuation and safety of the staff and visitors on site.
- Ensuring a roll call is carried out and
- Liaise with the fire wardens and the fire brigade, and
- The re-occupation of the premises in co-operation with the fire brigade, if attending.

Fire wardens

The Head of Provision has nominated fire wardens and it is their responsibility to ensure that all classrooms have been evacuated:

- Assistant Head of Provision – Gay Broadberry is responsible for the offices on the ground floor and supporting the Head of Provision.
- English Teacher –Niall Munro is responsible for the second floor of the main building and the main stairwell.
- Interim SAG Manager – Marlene Kerr is responsible for the Art Room, Support & Assessment Room and the school grounds.
- Science Teacher – Raoul D'Monte is responsible for the ground floor of the main building.

Office staff Are responsible to:

- Call the fire brigade
- Check that all visitors have been accounted for using the visitors book.
- Collect the registers and take them to the fire assembly point
- Report the success of the evacuation to the Head of Provision.

Class tutors

Are responsible to:

- Lead pupils to the fire assembly point
- Carry out a register check to ensure all pupils have been accounted for.
- Report the success of the evacuation to the Head of Provision.

Identified fire exit routes

Ground Floor:

Head of Provision Office, Staff Room, Front Office, Tuck Room, Induction Coordinator's Office – **exit via main entrance.**

Back Office and Kitchen – **either exit via the fire exit or via the main entrance.**

Day Room – **exit via the fire exit and through the gate located next to the Support & Assessment Room.**

Science Lab and student female toilet – **exit via the fire exit located by the science lab.**

Outdoors

Classroom (Art) – **exit via the fire exit located at the front of the Classroom and through the gate at the front of the building.**

Grounds in rear of the main building – **exit through the two gates next to the science lab.**

SAG Classroom & Office (Support & Assessment Group) – **exit via the fire exit door in the office of the building.**

First Floor:

ICT Room – **exit via the main staircase, then the main door.**

Maths Room, Business Studies Room, Assistant Head of Provision Office and English Room – **exit via the main stairs or the fire exit located by the staff toilet.**

Citizenship Room & Humanities Room - **exit via the fire exit located by the staff toilet.**

Basement and Loft

Only staff are permitted to be in these areas - **exit via the nearest fire exit.**

Key Stage 4 South Fire Evacuation Procedure

Introduction

Key Stage 4 South is a pupil referral unit accommodating staff and up to 48 pupils aged between 15 and 16.

The premises have a fire alarm system consisting of automatic fire detection as well as break glass actuation points. Some specific doors are fitted with magnetic locks linked to the fire alarm system. In addition there is an automatically activating isolation shutter for the kitchen which can be manually activated or automatically triggered by an alarm.

Procedure

This fire evacuation procedure is for during school hours and all staff will comply with this instruction.

Fire Alarm Actuation

On hearing the fire alarm (continuous whooping siren), stop what you are doing and leave the building immediately by the nearest fire exit.

If you are located on the second floor, exit via the nearest fire escape staircase.

Fire escape routes are signposted from each floor by directional fire exit signs.

Make your way to the fire assembly point, which is located in front of Atesh Restaurant, Masons Avenue.

Do not return for personal belongings.

Fire alarm action notices are located at each fire alarm break glass point.

Action on finding a Fire

If you find a fire, warn colleagues in the immediate area by shouting "Fire!"

Raise the alarm by actuating the nearest Fire Alarm break glass call point.

Commence evacuation of the school. Inform a Fire Warden (located at muster point) of all actions to date and decisions made. This should not delay your own evacuation.

Close doors and windows if there is time, and leave the building by the nearest exit.

Only attempt to fight the fire after the fire alarm has been sounded, and then only if you have been trained and it is safe to do so.

Fighting the Fire

Attack the fire using the appropriate fire extinguishers which are located at fire exits and by specific high risk equipment. Fighting a fire should only be carried out by staff who are trained in the use of extinguishers and then only when safe to do so.

Calling the Fire Brigade

On hearing the fire alarm the office staff will summon the Fire Brigade, dialling **999** ask for the fire brigade and provide the full address to the fire service operator. A notice detailing the action to be taken has been provided at this location.

Checking the fire zone

On hearing the fire alarm, the Head of Provision, Fire Warden and/or Site Manager will proceed to the fire alarm panel to identify the zone where the fire alarm has actuated and then to the zonal area to confirm if there is a fire or other reason for the alarm actuation.

If a fire is confirmed they will report the findings at the fire assembly point and liaise with the Fire Brigade Officer. No one will be allowed to re-enter the premises, until instructed by the fire brigade or authorised body.

If no fire is apparent, the HOP will return to the fire alarm panel, silence the fire alarm and then reset it. Those evacuated may return to the building only when instructed to do so by suitably authorised personnel.

Roll Call at Assembly point

Fire Wardens and Admin staff will account for of all those present in the building (students, staff and visitors). Any anomalies will be radioed to all Fire Wardens immediately.

The Fire Wardens will inform the senior fire brigade officer that either the site is cleared or if persons are unaccounted for, their last known location.

Reoccupation of the premises

Those evacuated may return to the building only when instructed to do so by suitably authorised personnel.

Fire wardens

Fire Wardens have specific areas of responsibility and a connecting evacuation plan. Their names are displayed throughout the building and they carry out regular briefings to ensure roles and responsibilities are clear.

Class teachers

Are responsible to:

- Lead students to the fire assembly point by the nearest emergency exit.
- Support register checking
- Maintaining order

Basement

Any staff working in either the basement or sub-basement must inform a Fire Warden that they will be working there. In case of an evacuation they should leave by the nearest exit, following the signage.

SVC KS3 – Coombe Road Fire Evacuation Procedure

Introduction

SVC KS3 is a pupil referral provision accommodating staff and up to **48** pupils aged between 11 and 14.

The premises have a fire alarm system consisting of automatic fire detection as well as break glass actuation points.

Procedure

This fire evacuation procedure is for during school hours and all staff will comply with this instruction.

Fire Alarm Actuation

On hearing the fire alarm (constant bell ringing), stop what you are doing and leave the building immediately by the nearest fire exit.

If you are located on the upper floor, exit via the nearest fire escape staircase, which is located in the art room.

Fire escape routes are signposted from each floor by use of the 'running man' and directional fire exit signs.

Make your way to the fire assembly point, which is located on the corner of Chatsworth Rd and Coombe Rd.

Close all doors and windows, if there is time.

Do not return for personal belongings.

Fire alarm action notices are located at each fire alarm break glass point.

Action on finding a Fire

If you find a fire, warn colleagues in the immediate area by shouting "Fire!"

Raise the alarm by actuating the nearest Fire Alarm break glass call point.

Commence evacuation of the school.

Close doors and windows if there is time, and leave the building by the nearest exit.

Only attempt to fight the fire after the fire alarm has been sounded, and then only if you have been trained and it is safe to do so.

Fighting the Fire

Attack the fire using the appropriate fire extinguishers which are located at fire exits and by specific high risk equipment. Fighting a fire should only be carried out by staff who are trained in the use of extinguishers and then only when safe to do so.

Calling the Fire Brigade

On hearing the fire alarm the office staff will summon the Fire Brigade, dialling **999** ask for the fire brigade and provide the full address to the fire service operator. A notice detailing the action to be taken has been provided at this location.

Checking the fire zone

On hearing the fire alarm, the Head of Provision will proceed to the fire alarm panel to identify the zone where the fire alarm has actuated and then to the zonal area to confirm if there is a fire or other reason for the alarm actuation.

If a fire is confirmed the Head of Provision will report the findings at the fire assembly point and liaise with the Fire Brigade Officer. No one will be allowed to re-enter the premises, until instructed by the fire brigade or the Head of Provision

If no fire is apparent, the Head of Provision will proceed to the fire assembly point. Once confirming all occupants are accounted for, the Head of Provision will return to the fire alarm panel, silence the fire alarm and then reset it. Once the fire alarm has been reset, the Head of Provision will then allow staff and pupils to re-enter the building.

Roll Call at Assembly point

Class tutors will lead their pupils to the fire assembly point, conduct a roll call to ensure all pupils are present and then liaise with the Head of Provision to inform that all pupils are cleared or account for those persons left in the premises.

Office staff will check that all visitors have been accounted for and liaise with the Head of Provision to inform that all visitors are cleared or account for those persons left in the premises.

The Head of Provision will inform the senior fire brigade officer that either the site is cleared or if persons are unaccounted for, their last known location.

Reoccupation of the premises

Staff and pupils will only be allowed to return to the premises when the all clear has been provided by either the fire brigade or the Head of Provision. The fire alarm must be reinstated and be fully operational.

Responsible Manager

The 'Responsible Manager' for the site is the Head of Provision – Kay Wilson, or the Assistant Head of Provision - Andy Halka, in the Head of Provision's absence. The Head of Provision will take responsibility for:

- The fire evacuation and safety of the staff and visitors on site.
- Ensuring a roll call is carried out and
- Liaise with the fire wardens and the fire brigade, and
- The re-occupation of the premises in co-operation with the fire brigade, if attending.

Fire wardens

The Head of Provision has nominated fire wardens and it is their responsibility to ensure that all classrooms have been evacuated:

- Assistant Head of Provision – Andy Halka is responsible for the offices on the ground floor and supporting the Head of Provision.

- Pixl Teacher – Chris Pecorella is responsible for the second floor of the main building and the main stairwell.
- Behaviour For Learning Key Worker – Alex Powell is responsible for the top floor of the building.
- HE Teacher – Winston Martin is responsible for the ground floor of the main building and the school grounds.

Office staff

Are responsible to:

- Call the fire brigade
- Check that all visitors have been accounted for using the visitors book.
- Collect the registers and take them to the fire assembly point
- Report the success of the evacuation to the Head of Provision.

Class tutors

Are responsible to:

- Lead pupils to the fire assembly point
- Carry out a register check to ensure all pupils have been accounted for.
- Report the success of the evacuation to the Head of Provision.

Identified fire exit routes

Ground Floor:

Front Door, Staff Room, Day room and side gate.

Back Offices, tuck room and staff room – **either exit via the fire exit or via the main entrance.**

Day Room – **exit via the main entrance or via the back door and through the gate down side alley.**

Kitchen – **exit via the main entrance or through the back door and side gate.**

Outdoors

Grounds in rear of the main building – **exit through the gate in side alley. .**

Front car park – go straight to assembly point on Chatsworth Rd.

First Floor:

All rooms –exit via the main entrance unless directed upstairs to the fire escape in art room.

Second Floor

Exit via fire escape in art room unless directed down to the main entrance.

Appendix 5

Risk Assessment

Staff are responsible for carrying out risk assessments and for reporting findings, particularly those requiring action. Generic Risk Assessments can be found in the Health & Safety Room on teacher share under policies and can be adapted accordingly.

Particular attention should be focussed on the safety of electrical equipment, the control of substances hazardous to health, manual handling operations and other specialist activities with the potential to cause harm.

Each member of staff responsible for a specialist area should with the help of a senior member of staff provide a risk assessment report that they have carried out in that area each year, detailing any actions required. This report should be signed and dated and passed to the Health & Safety Officer.

Specific risk assessments relating to individual persons, e.g. staff member or young person/pupil are held on that person's file.

Pregnancy Risk Assessment

Assessments on new and expectant mothers will be undertaken by the individual's line manager using the generic risk assessment provided by the council.

It is the responsibility of staff to inform their line manager as soon as they know they are (or are no longer) pregnant.

The risk assessment will be reviewed on a regular basis as the pregnancy progresses.

Curriculum Activities

Risk assessments for curriculum activities will be carried out by the relevant teachers using the SVC generic template.

Appendix 6

Accident Reporting Procedures

- Accidents, dangerous occurrences, and near misses on the standard Council Incident and Dangerous Occurrence Report form.
- Violent incidents and verbal abuse on the standard Council Violent Incident Report Form.

Copies of these forms are available *each school office*

The Headteacher / Head of Provision /School Business Manager will countersign the Council report form before the original copy is sent to the Health and Safety Consultancy. A copy should also be kept at the establishment.

- School accident reports will be monitored for trends and a report made to the Governors, as necessary.
- The Headteacher or their nominee will investigate accidents and take remedial steps to avoid similar instances recurring. Faulty equipment, systems of work, plant, equipment, fittings etc, must be reported and attended to as soon as possible.

In the event of a fatality, specified injury or an incident resulting in

- Pupils or other non-employees being taken to hospital
- Employee absence, as the result of a work related accident, for periods of more than 7 days (including weekends and holidays)

Specified injuries include:

- Amputation of an arm, hand, finger, thumb, leg, foot or toe
 - Any injury likely to lead to permanent loss of sight or reduction in sight in one or both eyes
 - Any crush injury to the head or torso, causing damage to the brain or internal organs
 - Any burn injury (including scalding) which covers more than 10% of the whole body's total surface area or causes significant damage to the eyes, respiratory system or other vital organs
 - Any degree of scalping requiring hospital treatment
 - Any loss of consciousness caused by head injury or asphyxia
 - Any other injury arising from working in an enclosed space
-
- These incidents will be reported immediately or as soon as possible to the Corporate Health and Safety Consultancy by telephone.

Appendix 7

Flammable and Hazardous Substances

Within curriculum areas (in particular Science, DT and Art) the heads of department / science teacher in each provision are responsible for the control of substances hazardous to health and ensuring that model risk assessments contained in the relevant national publications (CLEAPSS, Association for Science Education's "Topics in Safety" etc.) are in place.

Every attempt will be made to avoid, or choose the least harmful of, substances which fall under the **“Control of Substances Hazardous to Health Regulations 2002”** (the “COSHH” Regulations).

In all other areas the establishments nominated person(s) responsible for substances hazardous to health Headteacher, Head of Provision, Site Manager and science teaching staff.

They shall ensure:

- an inventory of all hazardous substances used on site is compiled and regularly reviewed.
- material safety data sheets are obtained from the relevant supplier for all such materials.
- risk assessments are conducted for the use of hazardous substances.
- all chemicals are appropriately and securely stored out of the reach of children
- all chemicals are kept in their original packaging and labelled (no decanting into unmarked containers).
- suitable personal protective equipment (PPE) has been identified and available for use.

PPE is to be provided free of charge where the need is identified as part of the risk assessment.

Appendix 8

Asbestos

The asbestos register is held by the Site Manager at KS4 North, KS4 South and KS3 and is made available to all staff and to all contractors prior to any works commencing on the fabric of the building or fixed equipment.

Please note that even drilling a hole or pushing a drawing pin into asbestos containing materials may result in the release of fibres into the air.

Under no circumstances must staff drill or affix anything to walls without first obtaining approval from the Head Teacher or Site Manager.

Any damage to materials known or suspected to contain asbestos should be reported to the Site Manager who will contact the Council's Asbestos Manager.

Any contractor who is suspected to be carrying out unauthorised work on the fabric of the building should be reported to the Head Teacher and/or Site Manager.

The register is reviewed and updated annually by contractors arranged via FM Helpdesk.

Appendix 9

Offsite Visits

Offsite visits will be organised following SVCs templates based on council guidance. Each trip organiser is responsible for the completion of the template and to ensure it is signed off by the head teacher prior to the date of the trip.

The following visits must also be approved by the CYPL director:

- Visit countries abroad – including exchange trips
- Visit UK destinations for more than 24 hours
- Take part in visits involving a risk regardless of duration or destination

Appendix 10

Contractors

All contractors must report to the school office where they will be asked to sign in and wear a school ID badge. Contractors will be issued with guidance on fire procedures, the asbestos register, local management arrangements and vehicle movement restrictions.

The site manager is responsible for monitoring areas where the contractor's work may directly affect staff and pupils and for keeping records of all contractor work.

Appendix 11

Minibuses

Please refer to SVC Minibus policy

Appendix 12

Legionella

The school complies with advice on the potential risks from legionella as identified in the council policy and health and safety manual.

The site manager / staff will be responsible for identifying and flushing rarely used outlets on a weekly basis and after school holiday periods. Where necessary water temperature checks will be undertaken on a monthly basis.

The site manager will ensure that any showers or other areas where water droplets are formed are disinfected and descaled on a quarterly basis.

A contract is held with the council FM helpdesk to monitor water hygiene and complete legionella risk assessments as KS4 North, KS4 South and KS3. At Cotelands and Springboard this is done by John Ruskin College facilities team.

Appendix 13

Violence to Staff

The school follows current guidelines on Positive Handling Strategies as advised by the council and the DfE.

Whole school training is provided bi-annually.

Individual pupil risk assessments will be completed and share with staff where necessary.

Violent incidents will be reported using the councils 'violence to staff form'.

Please refer to SVC policy for Managing Violence and the Threat of Violence.